

Palmer Park- Habitat Restoration Project



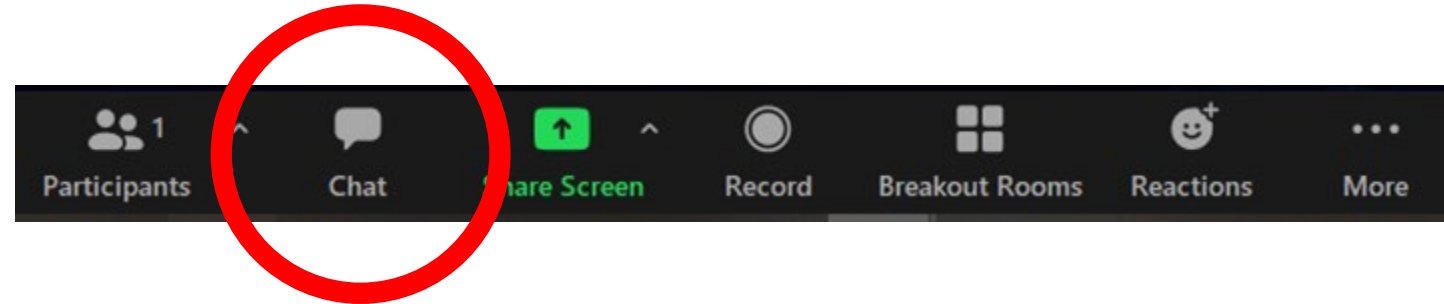
Community Meeting # 1
February 16th , 2022



How to Participate + Sign In

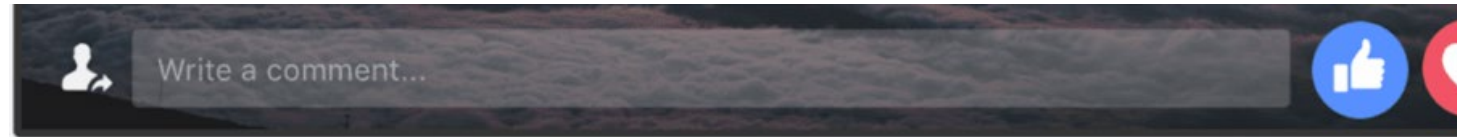
Zoom Participants:

Sign in and send questions or comments using the 'Chat' tool



Phone Participants:

Press *6 to Unmute, then ***9** to Raise Hand



This meeting will be recorded and posted to:
detroitmi.gov/departments/parks-recreation/parks/palmer-park

Agenda

Project Team

Project Overview

Project Timeline 2012 - Current

Public Survey Information

Collaboration and Engagement

Continuing Forward

Poll Questions

Discussion

Next Steps

City Project Team



Kim Tandy

District 2 Manager

Sean Davis

District 2 Deputy Manager



Angela Whitfield-Calloway

Councilmember District 2



Brad Dick

Group Executive

Tim Karl

Chief of Landscape Architecture

Shamori Whitt

Parks Planner



Jeff Klein

Deputy Chief of
Landscape Architecture



Sandra Stahl

General Services Department Director

Dara O'Byrne

Chief Parks Planner

Farhat Chaudhry

Landscape Designer



Jac Kyle

Outdoor Programs Manager



Project Team Partners



Technical Support



David Yocca

Senior Landscape Architect/Ecological
Planner



ABE Associates

Detroit-based Civil Engineering/Surveying

Community Engagement Partners



Rochelle Lento

People For Palmer Park
President



Sigal Hemy

People For Palmer Park
Board Member



Amy Lebowsky

People for Palmer Park
Board Member





Project Overview

Project Area



Intended Outcomes

- Provide an exciting/dynamic ecological setting, connecting park visitors to the park's restored natural landscapes, through programs and activities.
- Improve water quality and clarity of Lake Frances, and create an aquatic habitat to support it
- Restore or re-create ecological habitats that connect Lake Frances and the surrounding areas to the adjacent Witherell Woods
- Begin to restore the biodiversity and ecological integrity of the woods.

Connecting the Lake and the Forest

Lake Frances

Was the lake always there?

- Lake Frances is a man-made lake
- It was built by the Palmer Family as part of the historic landscape and site architecture same similar to the lighthouse and log cabin.
- Lake Francis water is currently stagnant and it relies on rainwater to refill it.

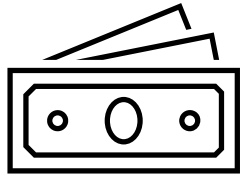


Witherell Woods

What is a Remnant Forest?

- Areas that have generally not been disturbed by humans.
- The original soil structure remains largely intact.
- Witherell Woods is 1 of only 7 remnant forests in the city and the largest in the Tri-County area.

Project Budget 1.3M

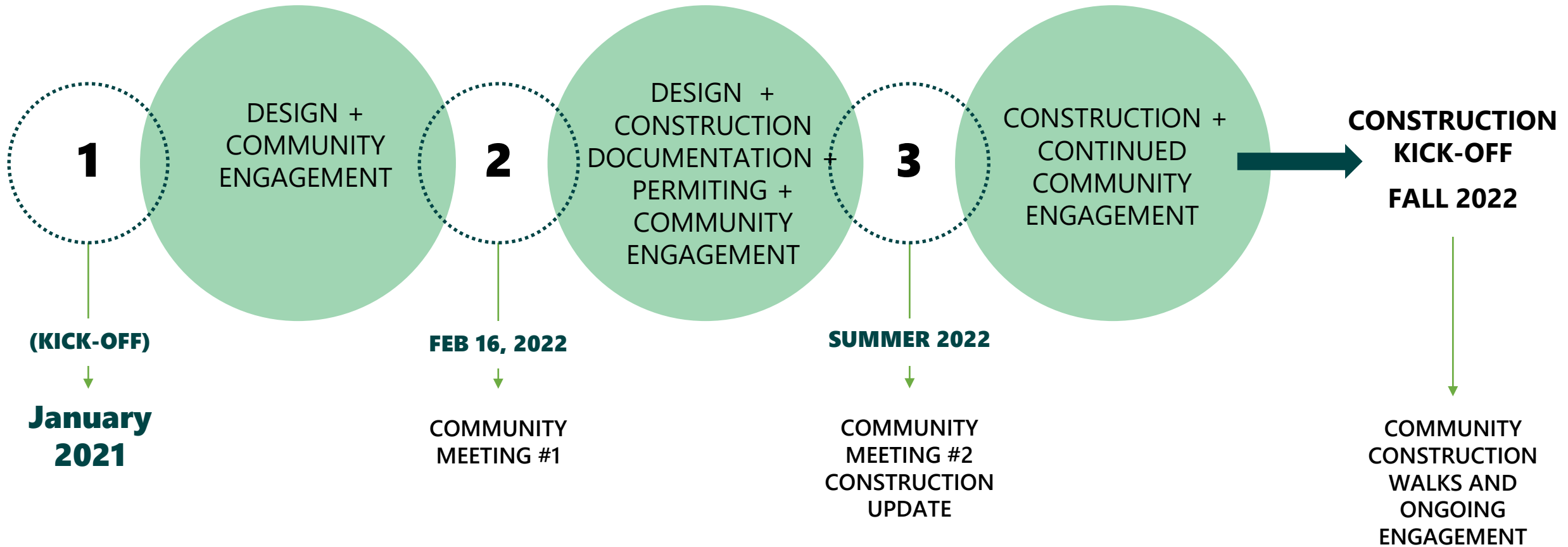


City of Detroit	\$300,000
National Fish and Wildlife Foundation	\$300,000
Michigan Enhancement Grant	\$700,000

PARK RESTORATION THROUGH COMMUNITY AWARENESS, STEWARDSHIP, PARTNERSHIPS, AND PARTICIPATION.



Project Timeline





Project Timeline 2012 – Current

2012 People for Palmer Park Master Plan



Transform the Park through an Ecologically Restorative Approach.



Historic Preservation Restoration and Ecological Innovation



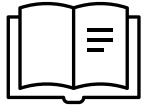
Created a unified vision for the park's future as a public amenity embedded in an ecologically diverse and productive environment.



Contemporary Best Practices within the established historical park context.



2016 Kresge Foundation Grant



Provided a Framework for the Restoration of Lake Frances



Improve Water Quality



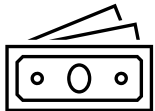
Remove Invasive Species



Provide Habitat



Retain Stormwater Run-Off



Helped in Determining Initial Costs



PALMER PARK - LAKE FRANCES REVITALIZATION PROJECT

CONCEPTUAL SITE PLAN



2018-2021 City, Grant, and Partner Funded Improvements

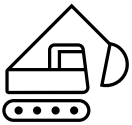
Over 3M in Park Improvements

- Tennis Court Complex
- New Trails/Walkways and Grading
- Kaboom Playground
- Pavilion and Picnic Shelter
- Volleyball Court
- Island Beautification
- Log Cabin and Light House Preservation and Restoration



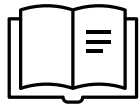
National Fish and Wildlife Grant (NFWF) Lake Francis and Witherell Woods

“The Fund supports habitat restoration projects throughout Southeast Michigan, with the dual purpose of restoring habitat while also improving public access to and/or use-opportunities of natural areas throughout the region.”



Outlined Improvements for Lake Francis

- Drain and Dredge Lake Francis
- Naturalize the Lake Shoreline
- Demonstrate Green Practices
- Control Waterfowl Waste
- Engage the Community and Educate



Outlined Improvements for Witherell Woods

- Improve access to the woods
- Establish a Volunteer Stewardship team to support long-term monitoring activities + seasonal care and management.
- Educational Opportunities and supportive steward programs with the Detroit Exploration and Nature Center.

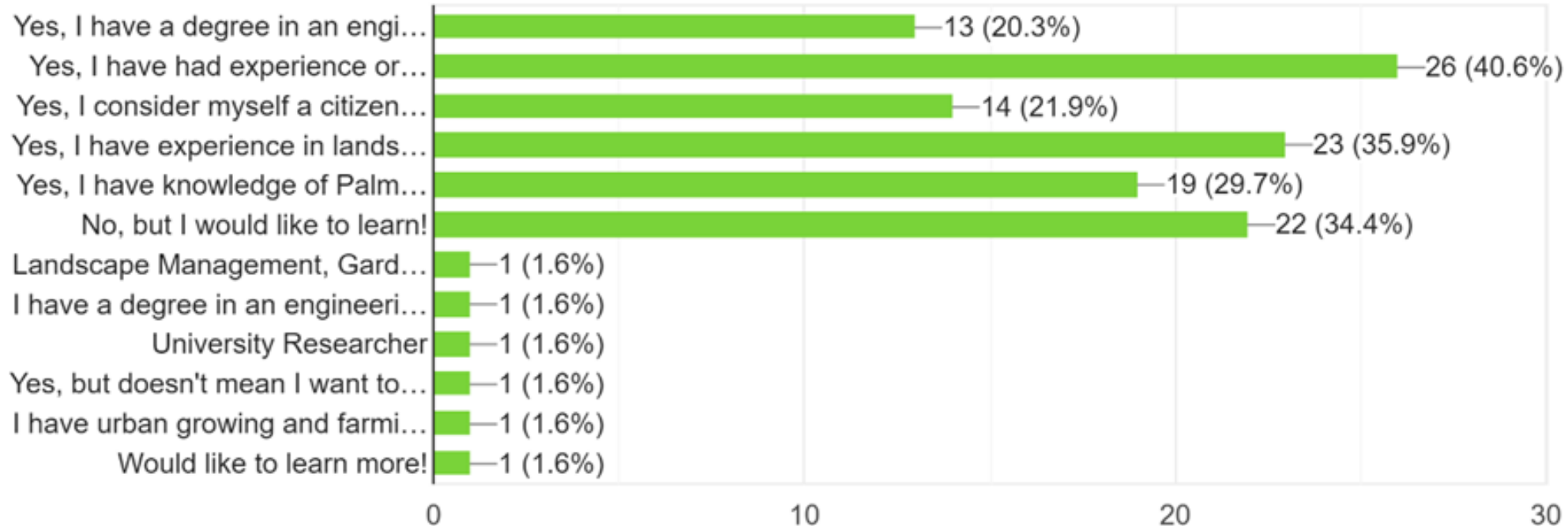




Public Survey Information

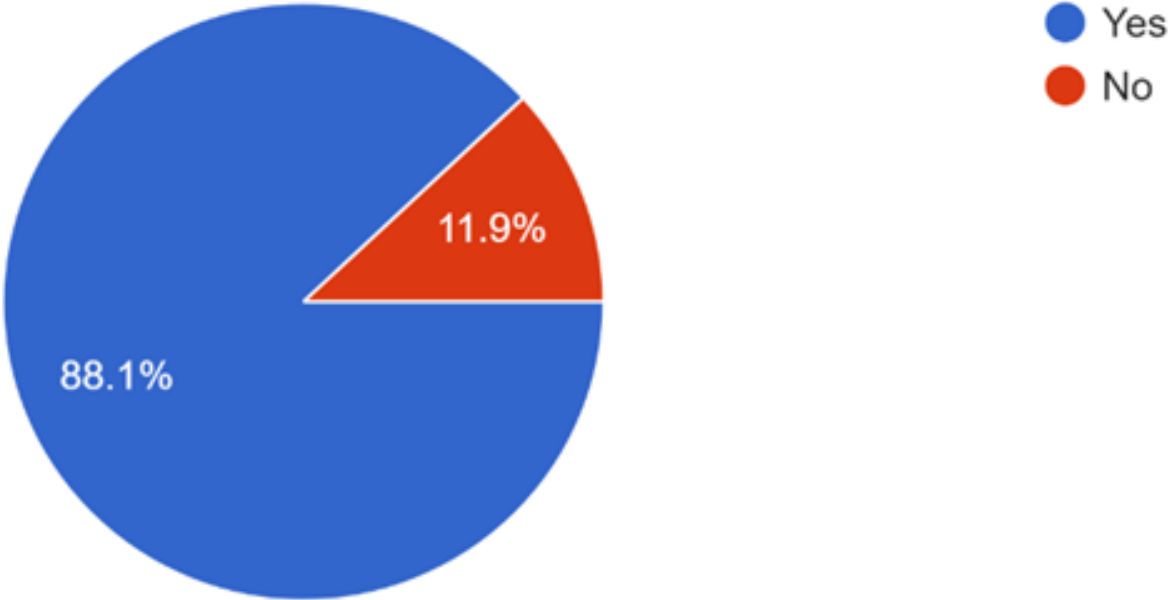
Are you knowledgeable about natural spaces and how they function?

64 responses



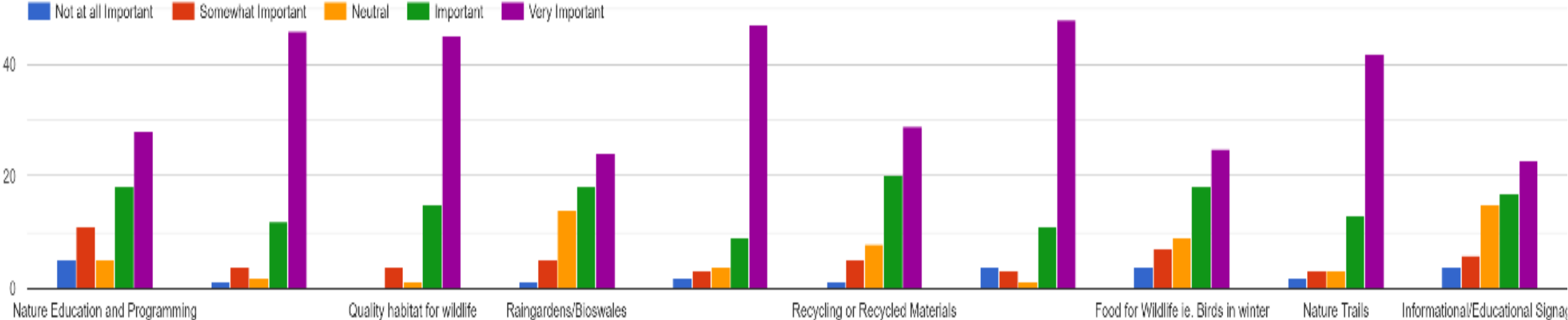
Have you seen wildlife at Palmer Park?

67 responses



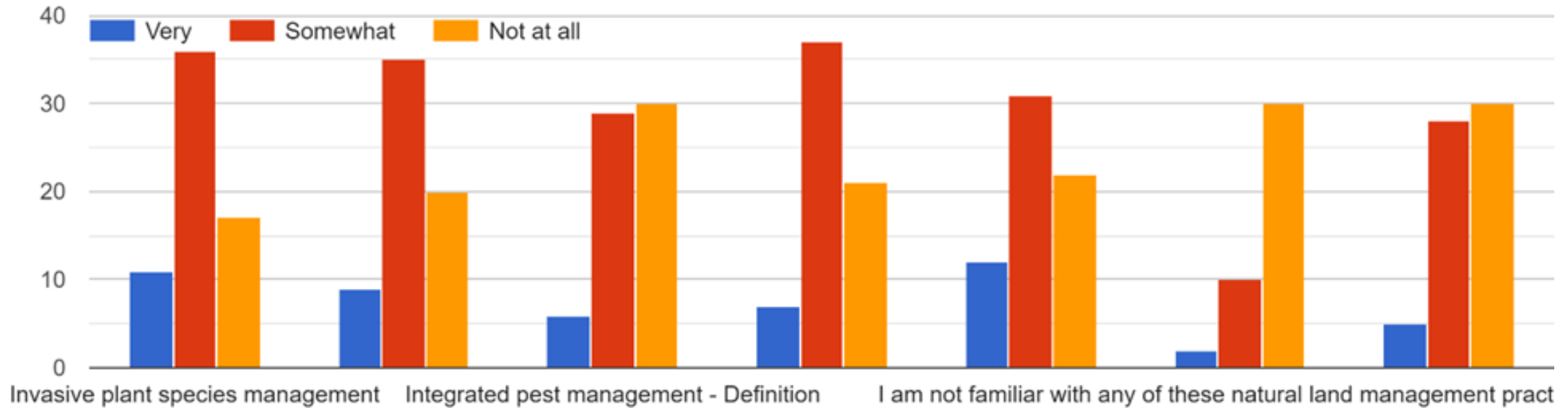
Survey

How important are the following ideas to you?



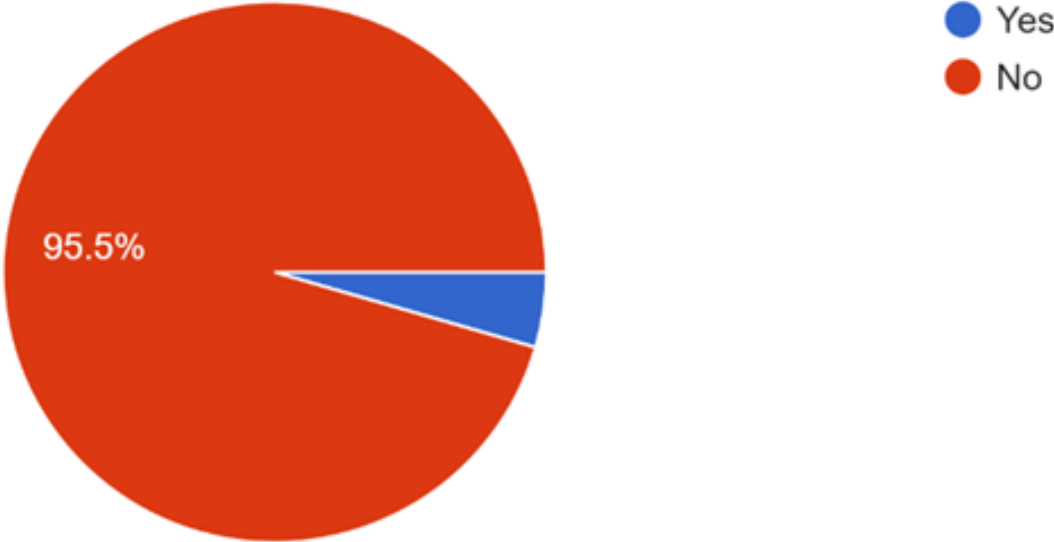
Survey

How familiar are you with these "natural area" maintenance and management practices?



Do you feed the geese and ducks at Lake Frances or in the park?

67 responses





Collaboration and Engagement

Collaboration and Engagement 2021

People For Palmer Park

- Graphic Design, Social Media and Events
- PFPP Art Fair
- Log Cabin Day
- Harvest Festival
- Winter Festival

Public Survey



Detroit Exploration and Nature Center DEN

- Don't Feed the Geese Campaign with Youth
- Hosted Stakeholder Discussion at the Nature Center
- Home to Wayne State Research Center



Collaboration and Engagement 2021

Gerould Wilhelm, PhD.

- Project Walk and Ecological Overview of the Site
- Ecological Overview of Callahan Park



Dave Yocca

- Presented at UD Mercy Hosted Bioneers Conference
- Lead a Youth Site Walk



Collaboration and Engagement 2021

Detroit Audobon

- Coordinating and Partnering on Bird Habitat

University of Detroit Mercy

- Using the park as a living laboratory
- Measuring Water Quality
- Assessing Tree Health in Witherell Woods

Wayne State University

- On-site Research Station
- Study Amphibians and Ephemeral Pools



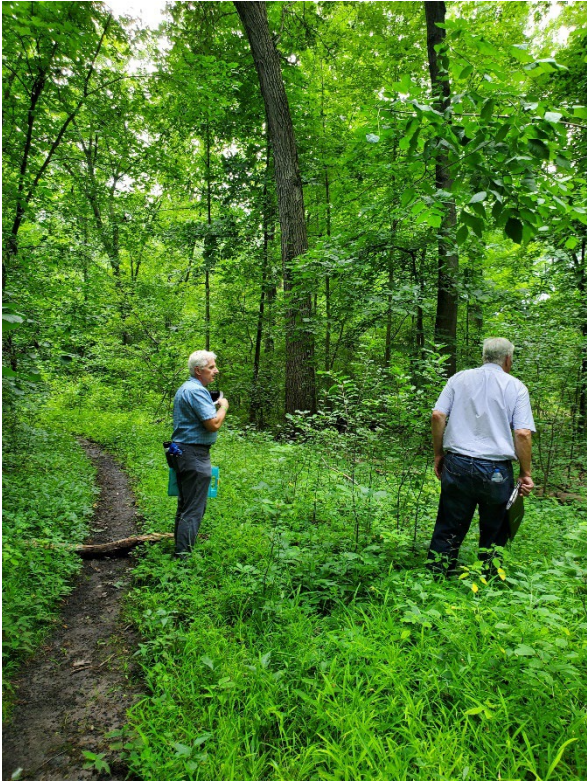
Collaboration and Engagement 2021

Greening of Detroit

- Research Resilient Green Ash Species In Witherell Woods

Sierra Club

- Detroit Outdoors Campaign





Continuing Forward

1M Michigan Enhancement Grant Lake Frances and Witherall Woods

Additional Improvements for Lake Frances



- Restore Water Recirculation System



- Naturalize Additional Adjacent Areas with an Ecological Approach



- Create Additional Bioswales to Manage Stormwater

- Construction of Boardwalks



Additional Outlined Improvements for Witherell Woods



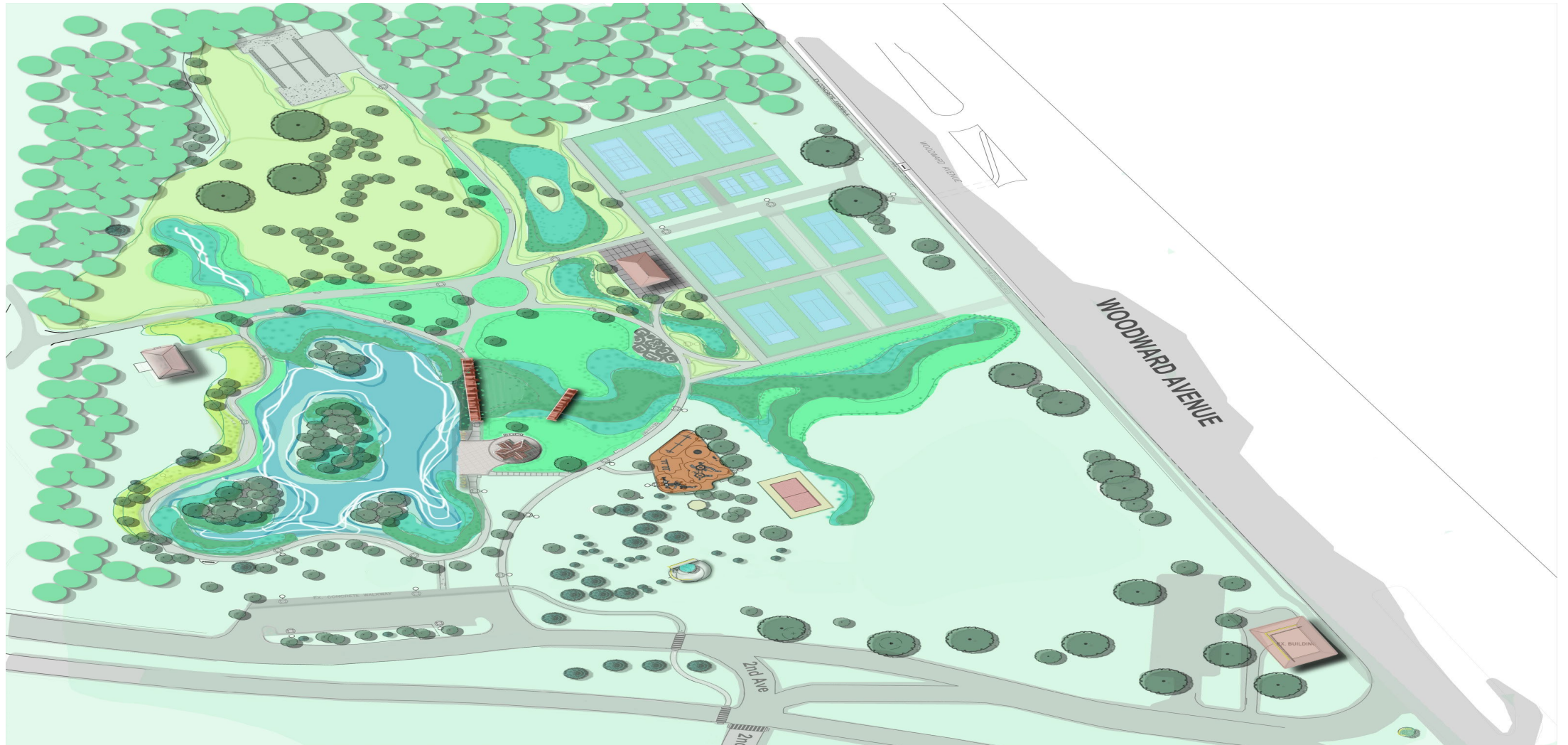
- Walkway Improvements and better connectivity through the woods



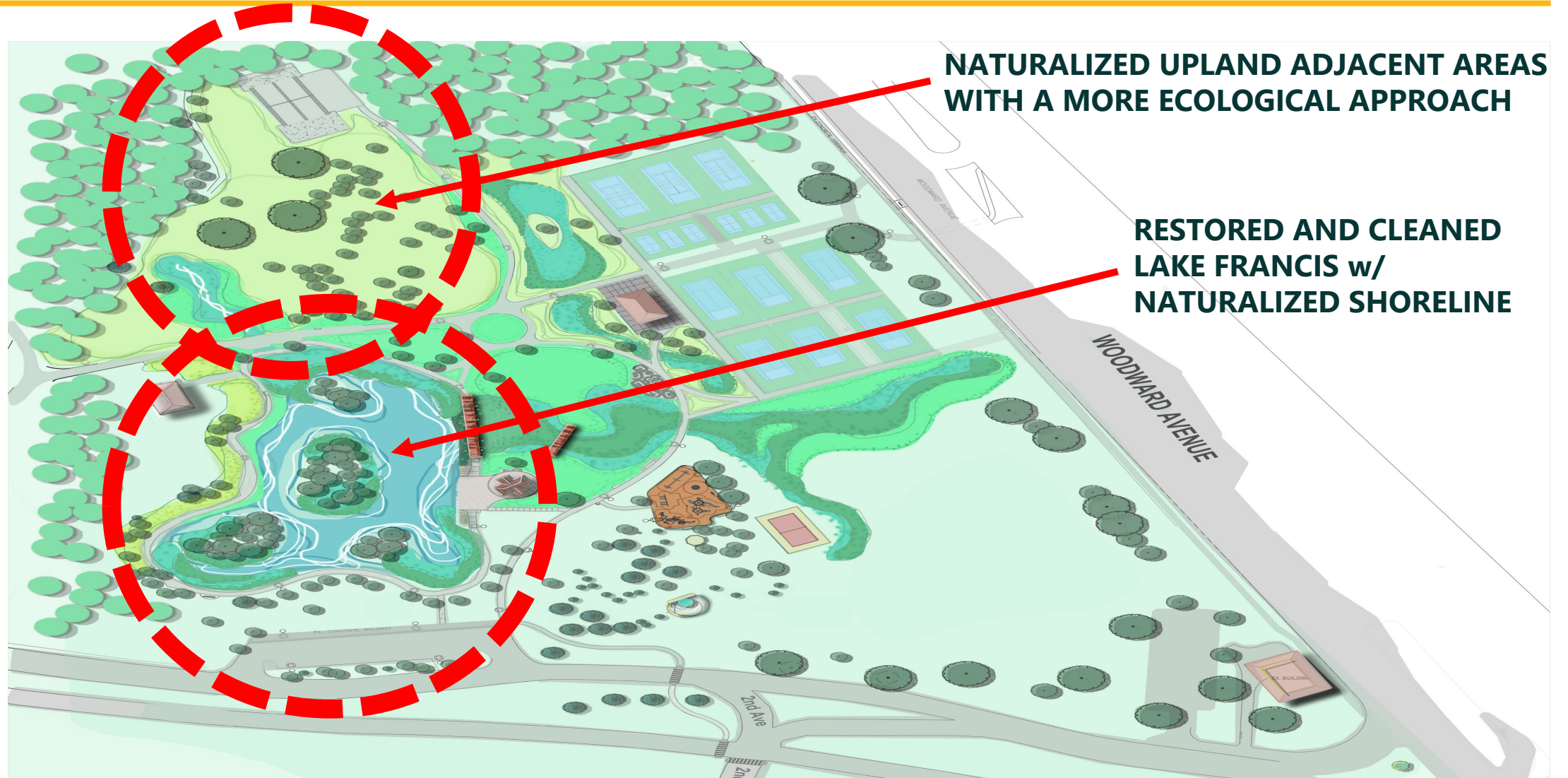
- Cleaning and Clearing of Invasive Species.



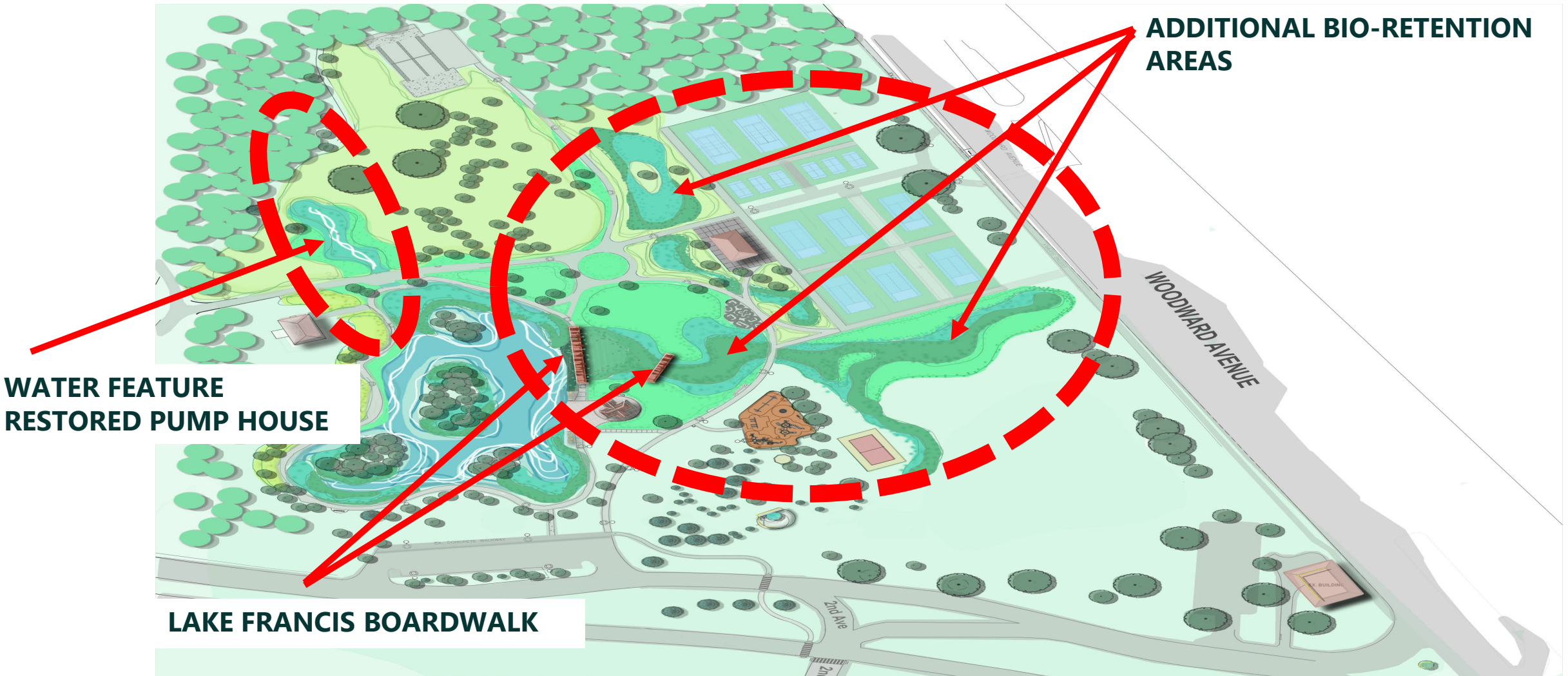
Updated Phase 1 Master Plan - Overview



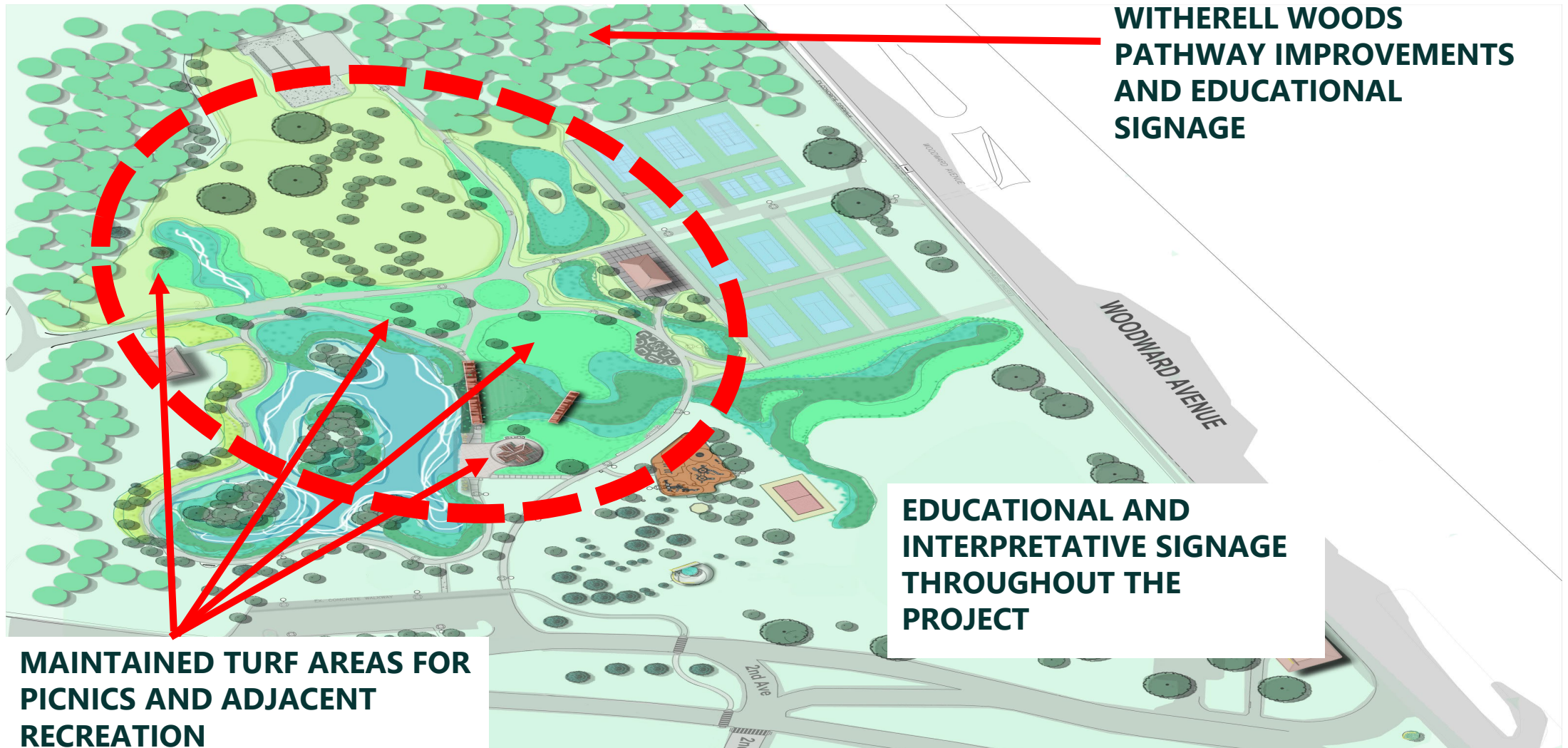
Updated Phase 1 Master Plan - Overview



Updated Phase 1 Master Plan - Overview



Updated Phase 1 Master Plan - Overview



**WITHERELL WOODS
PATHWAY IMPROVEMENTS
AND EDUCATIONAL
SIGNAGE**

**EDUCATIONAL AND
INTERPRETATIVE SIGNAGE
THROUGHOUT THE
PROJECT**

**MAINTAINED TURF AREAS FOR
PICNICS AND ADJACENT
RECREATION**

Perspective Views/Vision



Perspective Views/Vision



Perspective Views/Vision



Maintenance and Stewardship Goals

Establish a volunteer stewardship team to support long-term management and monitoring activities like invasive species removal, selective thinning, removal of waste and debris.

Detroit Exploration and Nature Center (DEN) provides additional educational and stewardship activities.

City of Detroit, regular maintenance + natural maintenance training and immersion.

Controlled Burning



Maintenance and Stewardship Goals



Maintenance and Stewardship Goals



Maintenance and Stewardship Goals



Maintenance and Stewardship Goals





Poll Questions



Discussion



Next Steps

Next Steps

Next Community Engagement Meeting: Summer, 2022

Community Engagement – Ongoing, Follow 

Construction Kick-Off: Fall 2022

Project Website: detroitmi.gov/departments/parks-recreation/parks/palmer-park

Farhat Chaudhry - Project Manager/Designer

chaudhryf@DetroitMI.gov

313-628-2332