

MIDWEST-TIREMAN
Neighborhood Framework
Making Connections with New Opportunities

Community Outreach Public Meeting #1

Planning and Development Department
June 27, 2022



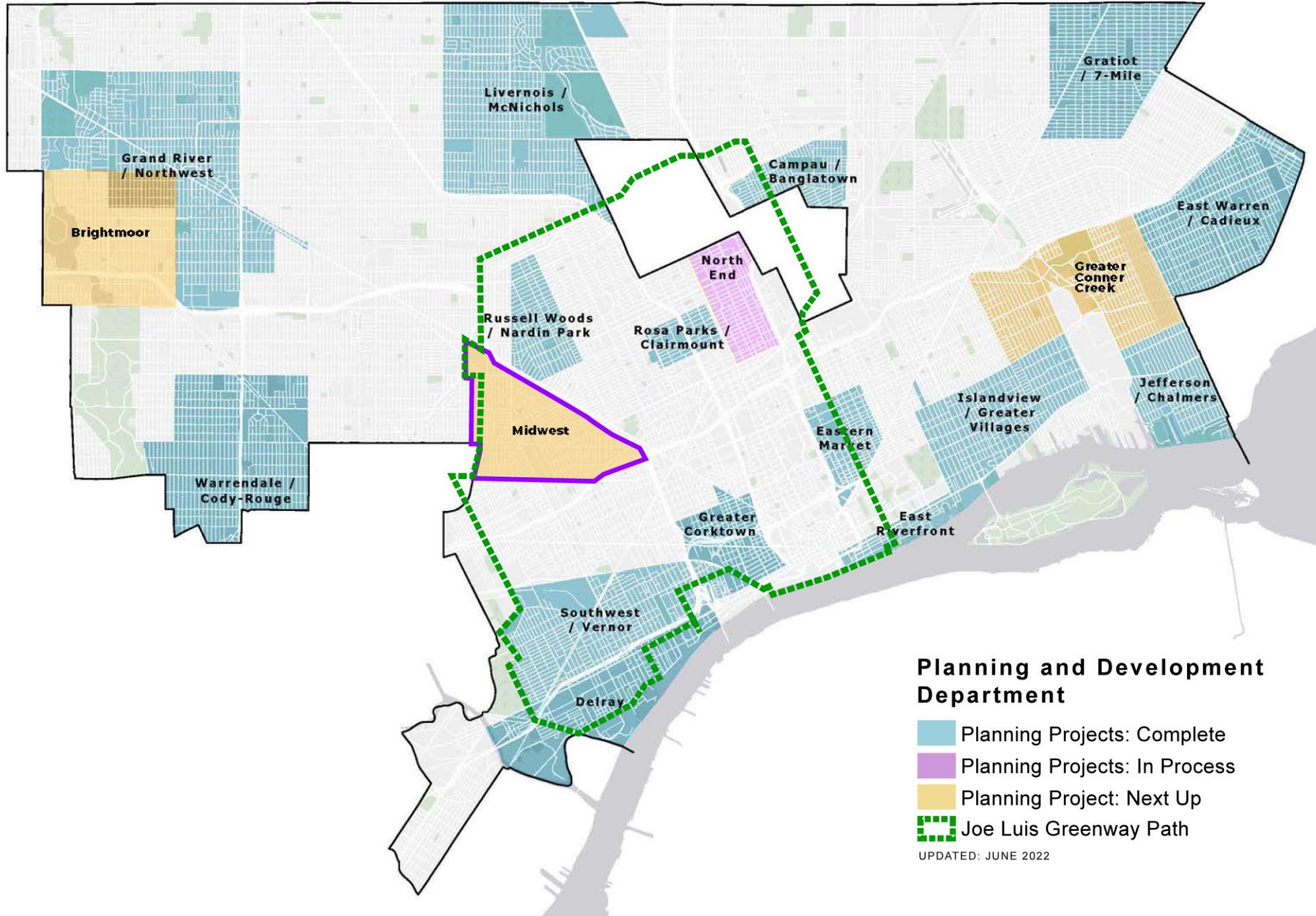
**27.5
MILES**

**FIRST SECTION
IN MIDWEST-TIREMAN**

**CONNECTIONS TO
DETROIT
NEIGHBORHOODS,
RIVERFRONT, DOWNTOWN,
SW DETROIT,
CORKTOWN, DEARBORN
, HAMTRAMCK,
HIGHLAND PARK**

**NON-MOTORIZED
GREENWAY/ PATHWAY
LOOP**

**FAMILY-FRIENDLY
FOCUS**



**Planning and Development
Department**

- Planning Projects: Complete
- Planning Projects: In Process
- Planning Project: Next Up
- Joe Luis Greenway Path

UPDATED: JUNE 2022



MIDWEST-TIREMAN Planning Areas

LEGENDS

Neighborhood boundary line



Livernois Avenue



Tireman Street



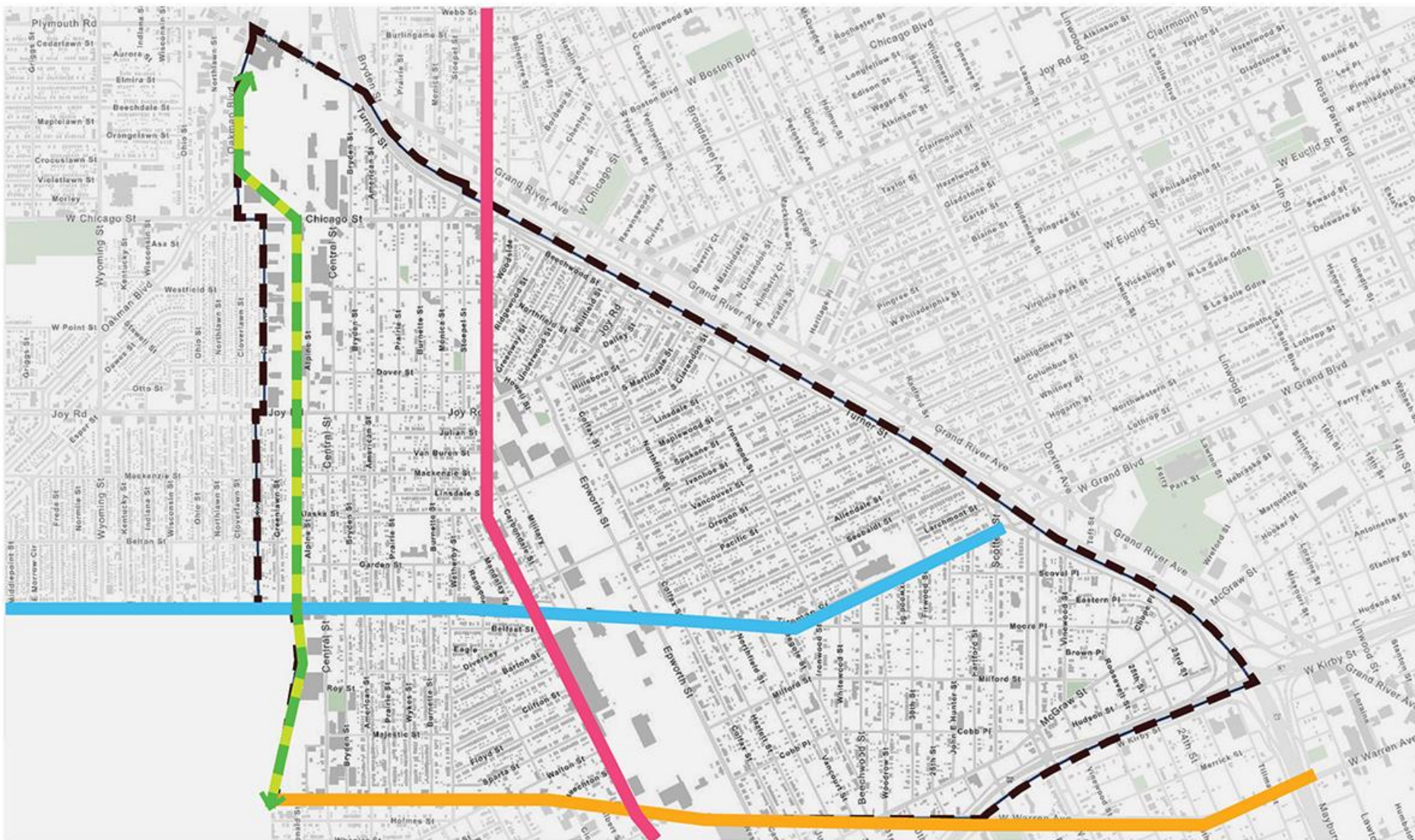
W. Warren Street



Joe Luis Greenway



0 1,250 2,500 Feet



MIDWEST-TIREMAN Boundaries

2021 POPULATION

10,741

2010 POPULATION 13,269

2021 POPULATION

659,751

2010 POPULATION 709,119

1930 MW-T PEAK POPULATION

59,081

81.8% DECLINE TO 2021

1930 POPULATION

1,568,662

57.9% DECLINE TO 2021

2021 LATINO POPULATION

1,267 @ 11.8%

504 @ 3.8% IN 2010

INFLUX OF HOUSING
REHABILITATION FROM 2010 TO
PRESENT WITH INCREASE
OF LATINO POPULATION IN
MIDWEST-TIREMAN

2021 LATINO POPULATION

54,429 @ 8.25%

48,362 @ 6.82% IN 2010

2021 65+ POPULATION

1,759

1,779 IN 2010

2021 65+ POPULATION

104,677

81,925 IN 2010



MIDWEST-TIREMAN

City Comparison

CITY OF DETROIT



- ### Key Street Intersection Nodes ①
1. Tireman-Livernois
 2. W. Warren - Livernois
 3. Oakman - Grand River
 4. Joy - Livernois
 5. W. Chicago - Livernois
 6. W. Warren - McGraw

- ### Joe Louis Greenway (JLG) Nodes ①
1. W. Warren (Trailhead)
 2. Tireman
 3. Joy
 4. W. Chicago

- ### Opportunity/ Challenge Sites ①
1. Sherill Elem./ Middle School - 7300 Garden St
 2. William Sampson Elem. School - 6075 Begole St
 3. Coca Cola (relocating) - 5981 W Warren St
 4. Equity Alliance Management - 6602-6656 Walton
 5. McGraw Elementary Site - 3500 McGraw
 6. Sirotkin Park
 7. Epworth Area Industrial Sites

Tireman (Church Row)

Include Coca Cola

Warren (Auto Row)

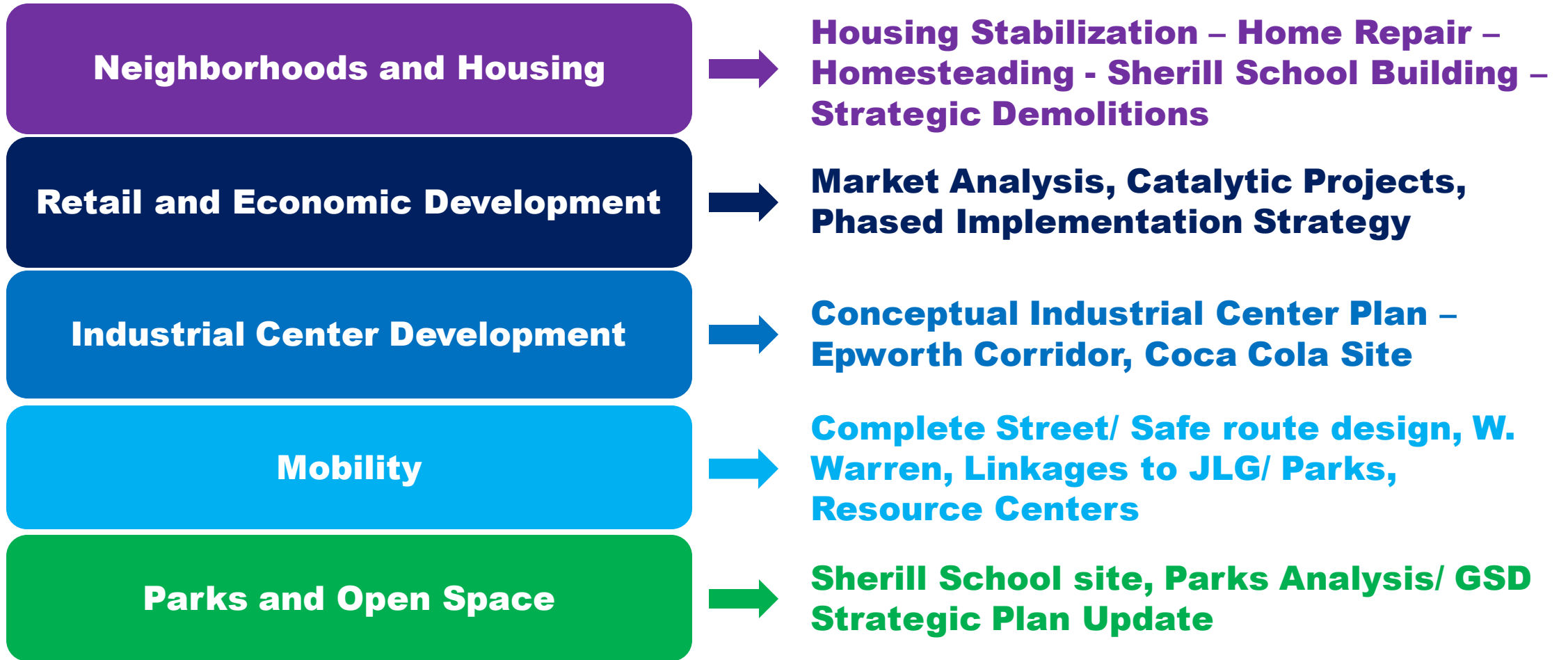


MIDWEST-TIREMAN Making Connections with New Opportunities



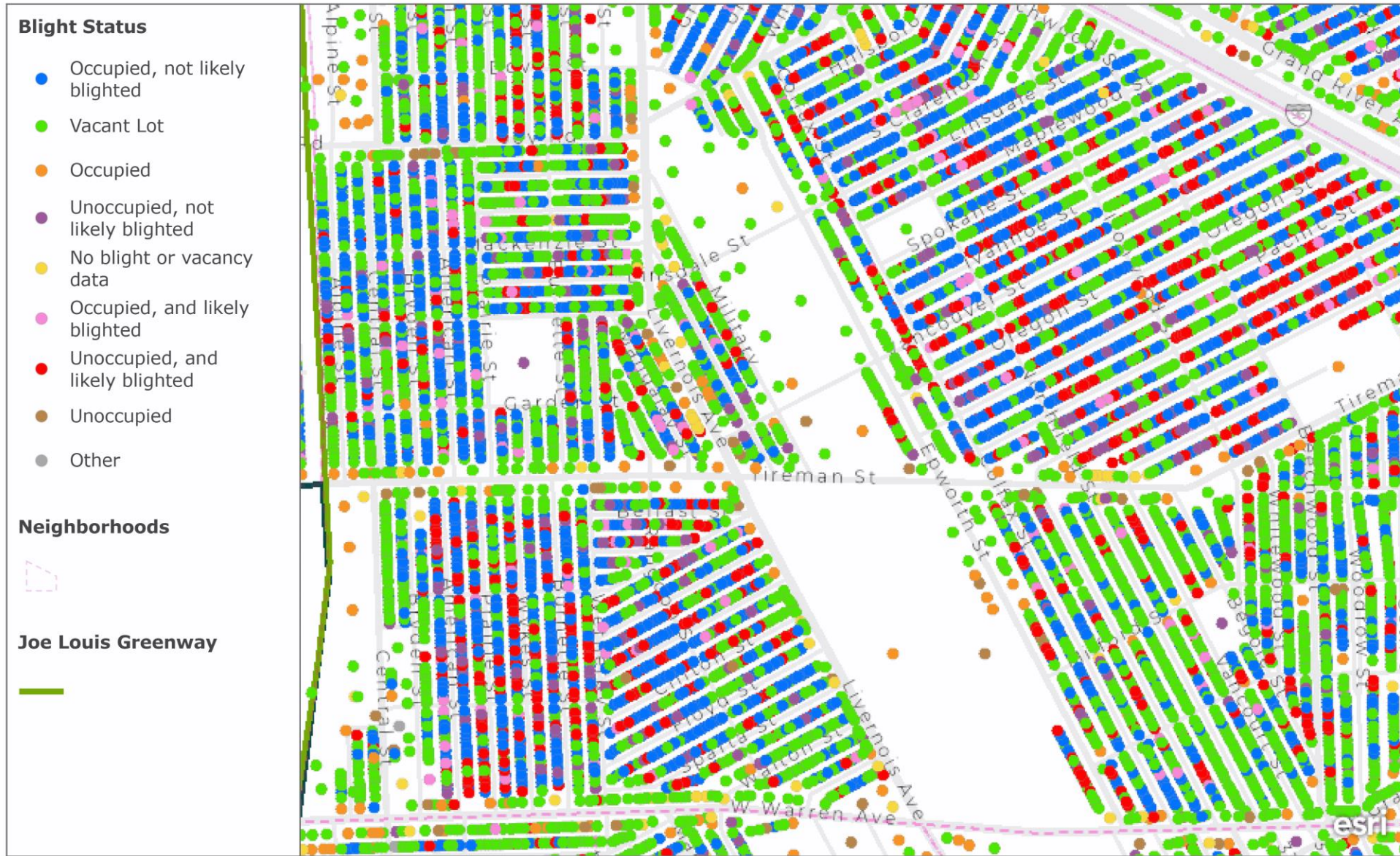


MIDWEST-TIREMAN Opportunity Site Planning



*Elements vetted through topical forums with other departments and agencies and incorporated into the SOW



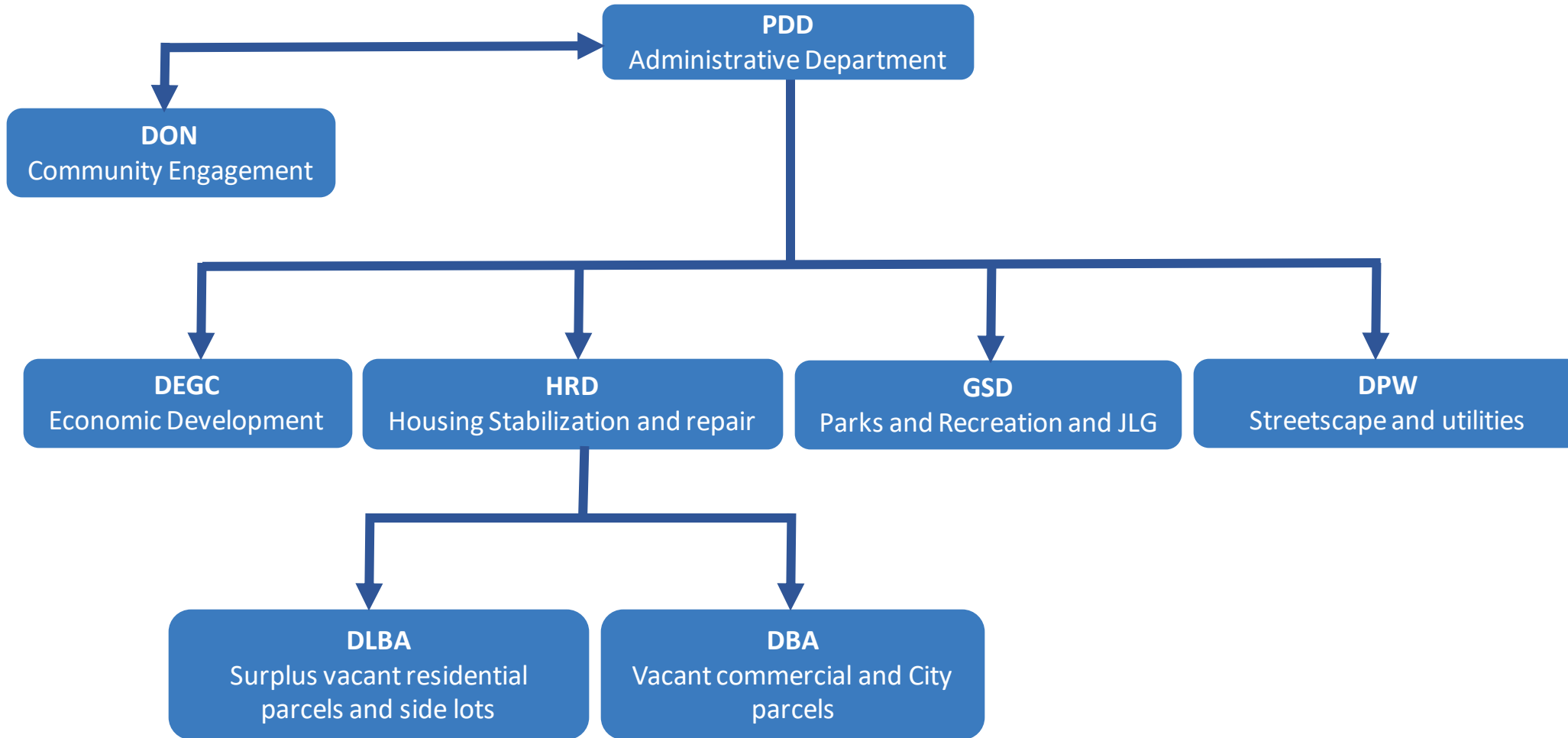


Blight Status in Midwest Tireman

0.2mi



MIDWEST-TIREMAN Blight Status



- Supporting partners
- BSEED
 - DWSD
 - DDOT



MIDWEST-TIREMAN Organization Structure



MIDWEST-TIREMAN Consultant Milestones



MIDWEST-TIREMAN Framework Milestones



Note: Smaller stakeholder meetings will take place throughout the community engagement process



MIDWEST-TIREMAN Community Engagement Timeline



JOHN F. SIVILLS III
Lead Urban Designer
Project Lead

☎ **313-224-4403**



RASHEDUL H. DEEPON
Planner II
Project manager

☎ **313-224-4531**

E-MAIL US:

midwest-tireman@detroitmi.gov

VISIT OUR WEBSITE FOR MORE INFORMATION

Planning and Development Department

www.detroitmi.gov/midwest-tireman/

**THANK
YOU!**

**LET'S HEAR
SOME
QUESTIONS...**

