

COMMUNITY MEETING

JOE LOUIS GREENWAY DESIGN UPDATE

ALL PARTICIPANTS ARE MUTED AND VIDEO IS OFF

WE'LL GET STARTED IN A FEW MINUTES

WE WILL BE RECORDING THE MEETING TO SHARE ONLINE.



JOE
LOUIS
GREENWAY





AGENDA

1. Introductions
2. Framework Plan
3. Phase 1 Update
4. Response Activity Plan
5. Questions
6. Preliminary Construction Plans
7. Next Steps
8. Discussion

LFO

Slide 2

LFO

Okay listing discussion once?

Lindsay Fercho, 2021-12-06T21:12:43.836

INTRODUCTIONS

GENERAL SERVICES DEPARTMENT STAFF:



**DARA
O'BYRNE**

Chief Parks
Planner



**JEFF
KLEIN**

Deputy Chief of
Landscape
Architecture



**WILLIAM
McCARLEY**

Landscape
Architect for Joe
Louis Greenway



**CHRISTINA
PELTIER**

Project Manager
for Joe Louis
Greenway



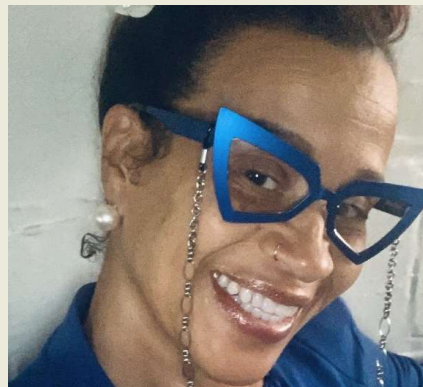
**HANAN
YAHYA**

Project Manager
for Joe Louis
Greenway

CITIZEN ADVISORY COUNCIL



Rochelle Lento
District 2



Victoria Griffin
District 3



Ashia Phillips
District 5



RuShann Long
District 6



Shandra Pickens
District 7



Willie Faison
Highland Park



Kathy Angerer
Hamtramck

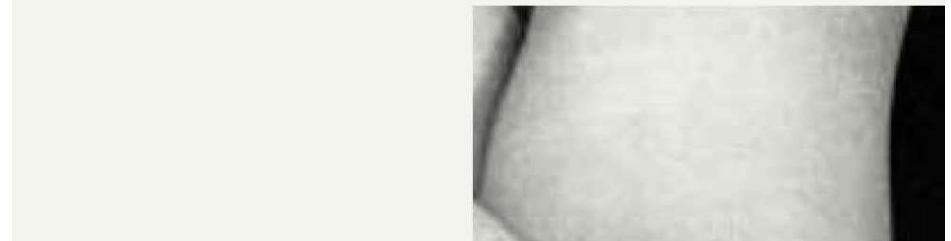
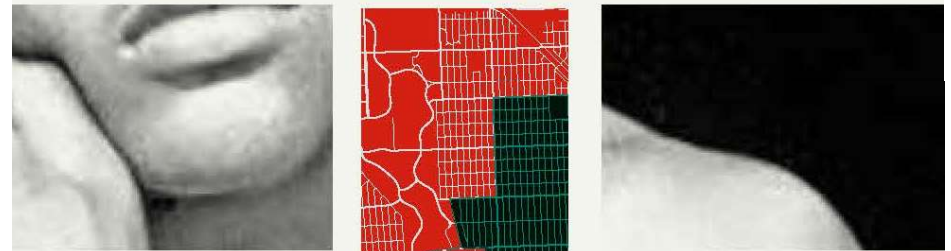


Kaileigh Bianchini
Dearborn

JOE LOUIS GREENWAY

FRAMEWORK PLAN

www.joelouisgreenway.com





THE VISION

The Greenway will:

- Enhance residents' quality of life and promote community development
- Promote equality and equity
- Connect people and places

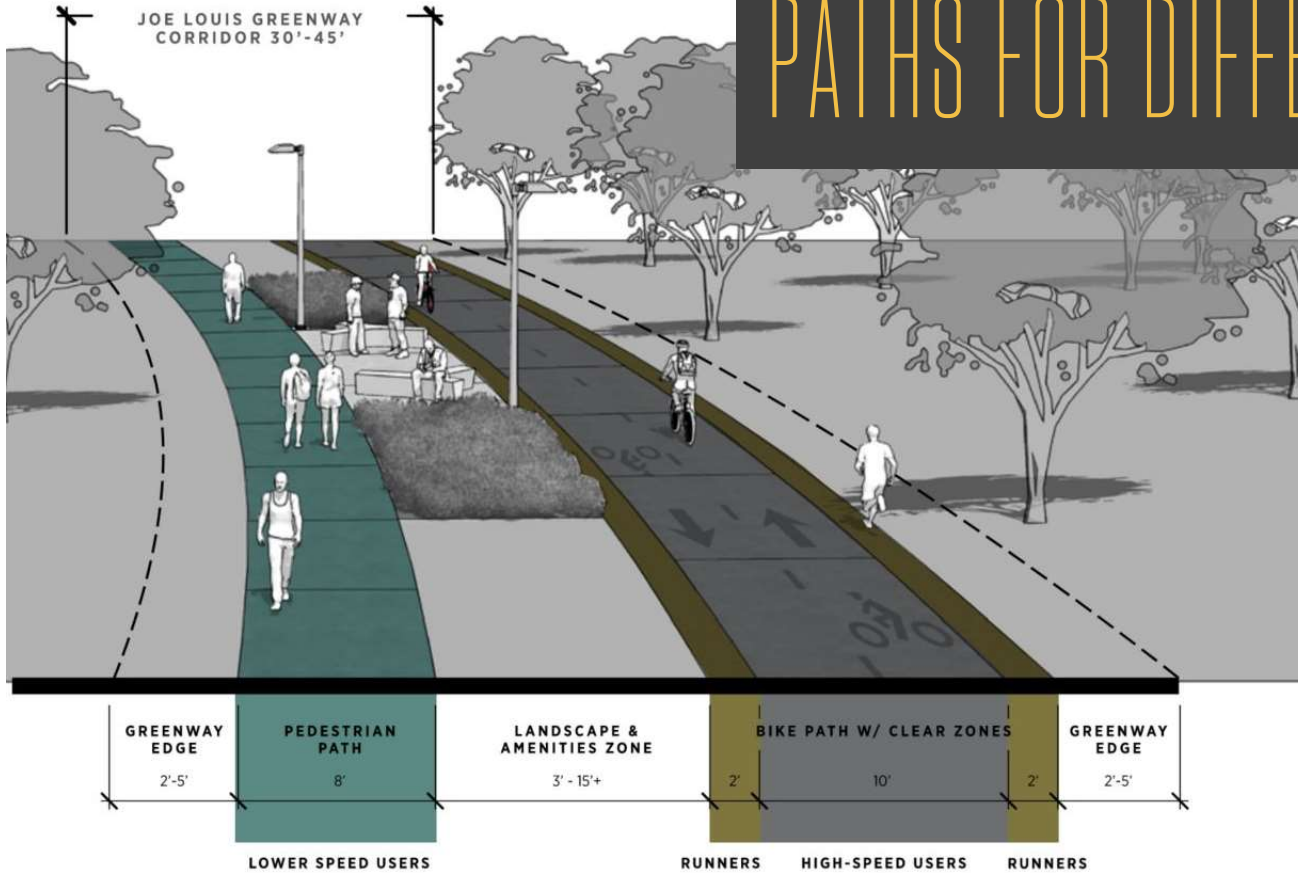


ROUTE

27.5 miles of pathway that provides a safe loop around the region and:

- Consists of new trails and on-street bike lanes
- Links to existing trails and an international pedestrian and bicycle crossing
- Connects Dearborn, Hamtramck, Highland Park, and five council districts

PATHS FOR DIFFERENT USERS



Dedicated pedestrian path for slower users

Clear zone on edge of bike path for runners and joggers

Bike path for high-speed users such as bikes and scooters



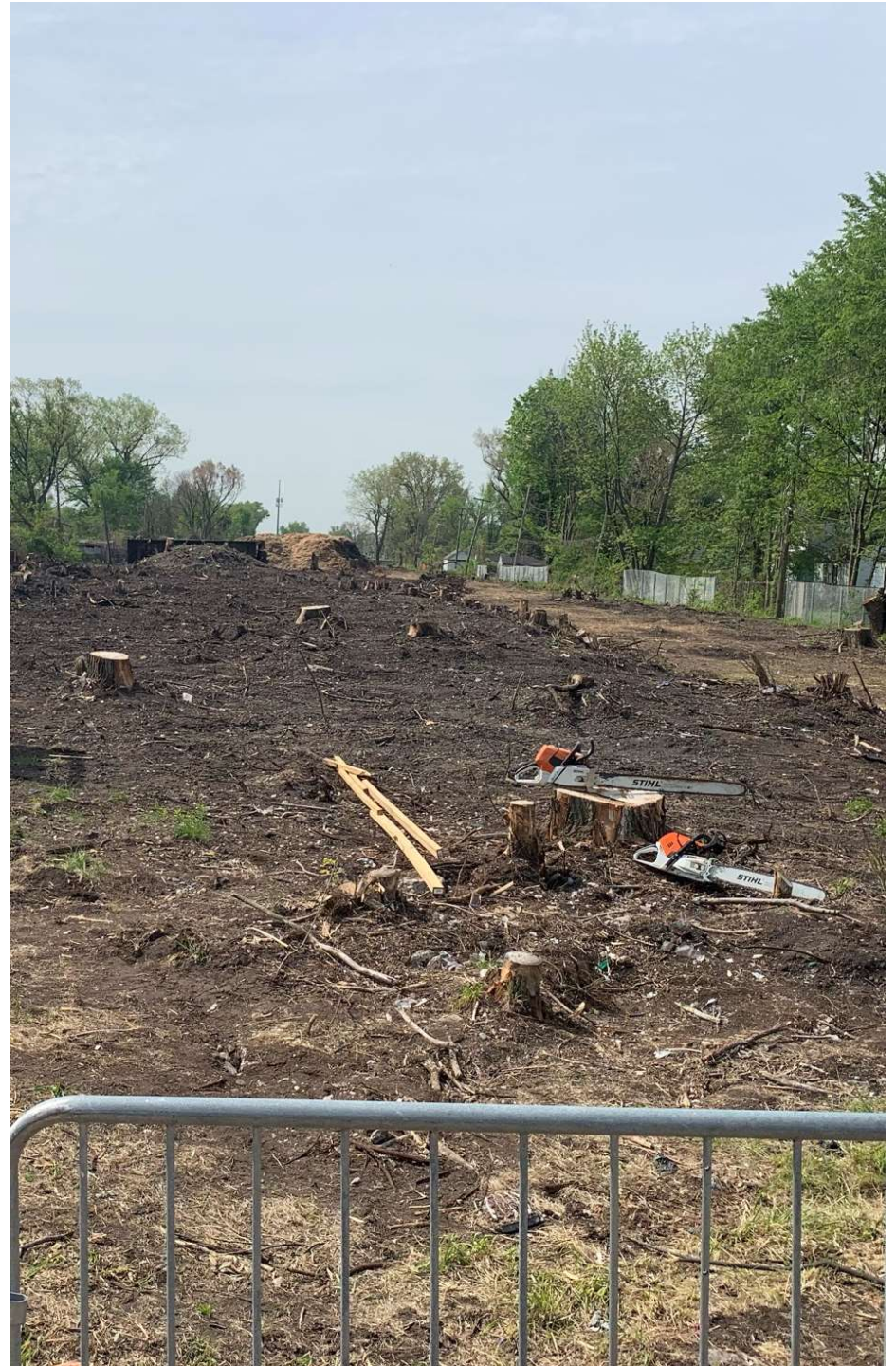


POLL 1

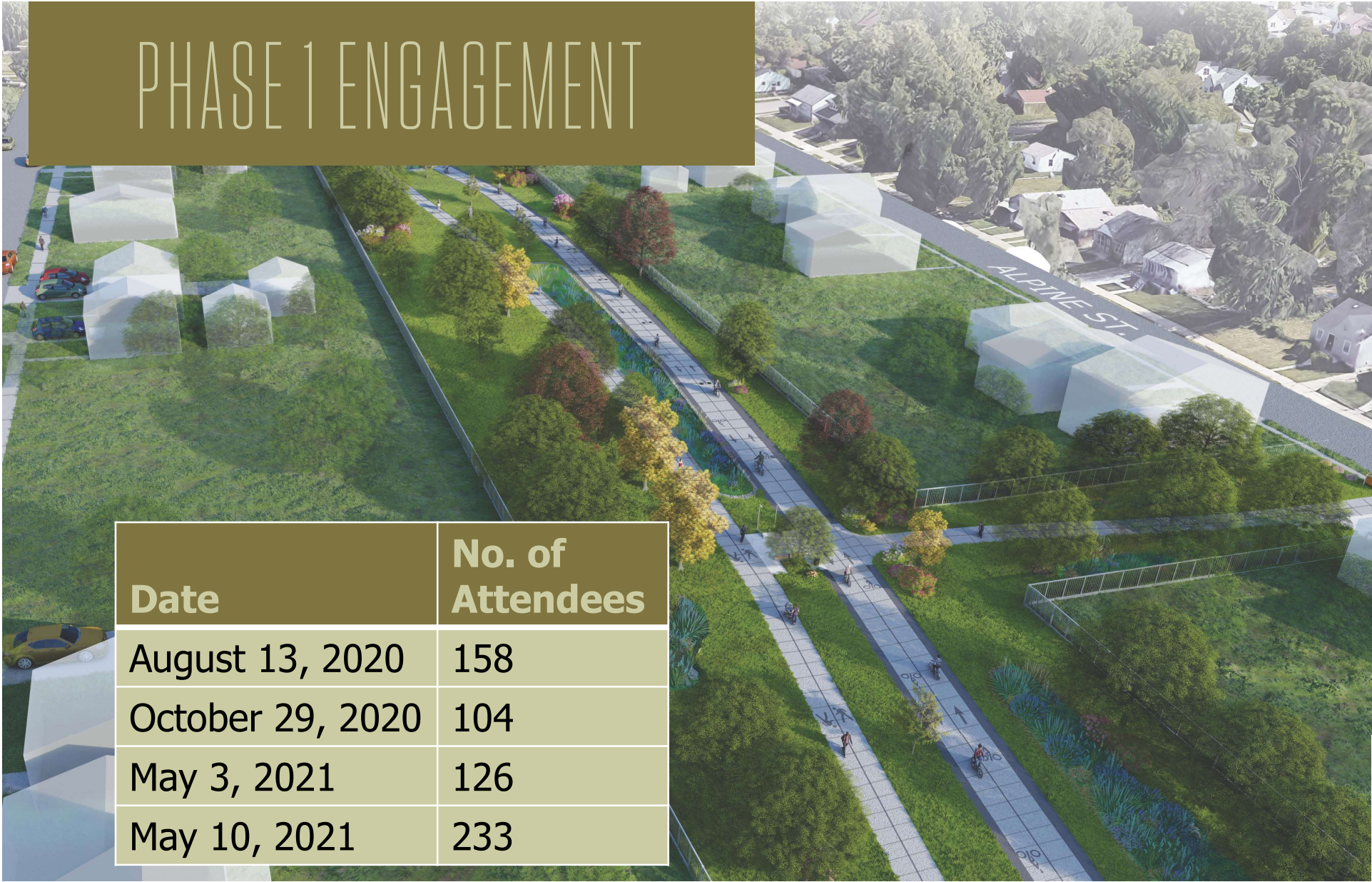
Did you participate in previous Joe Louis Greenway meetings?

JOE LOUIS GREENWAY

PHASE 1 UPDATE



PHASE 1 ENGAGEMENT



Date	No. of Attendees
August 13, 2020	158
October 29, 2020	104
May 3, 2021	126
May 10, 2021	233

Document Library: www.joelouisgreenway.com



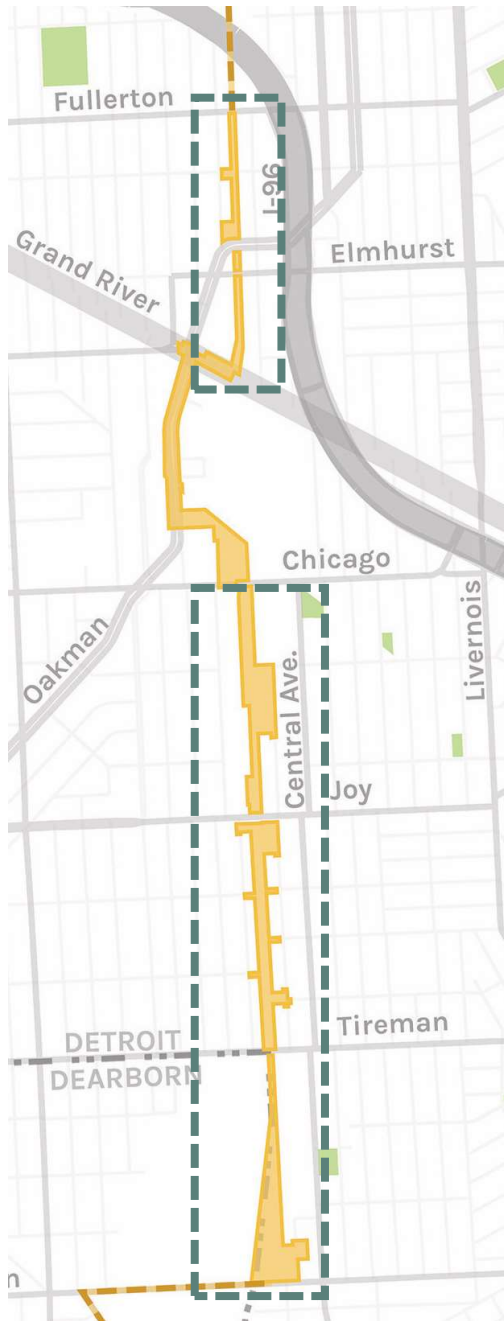
CONSTRUCTION STATUS

1.1 miles under construction between Warren and Joy

1.7 additional miles designed between Joy and Fullerton

Two types of paths:

- On-street bike lanes
- Off-street paths in Conrail right-of-way





CURRENT





JOE LOUIS GREENWAY



FUNDED BY AMERICAN RESCUE PLAN ACT

Grand River Avenue, looking north



Fullerton Avenue, looking south





JOE LOUIS GREENWAY

AFTER
OFF-STREET



2023 Transportation Alternatives Program Grant Application



JOE LOUIS GREENWAY

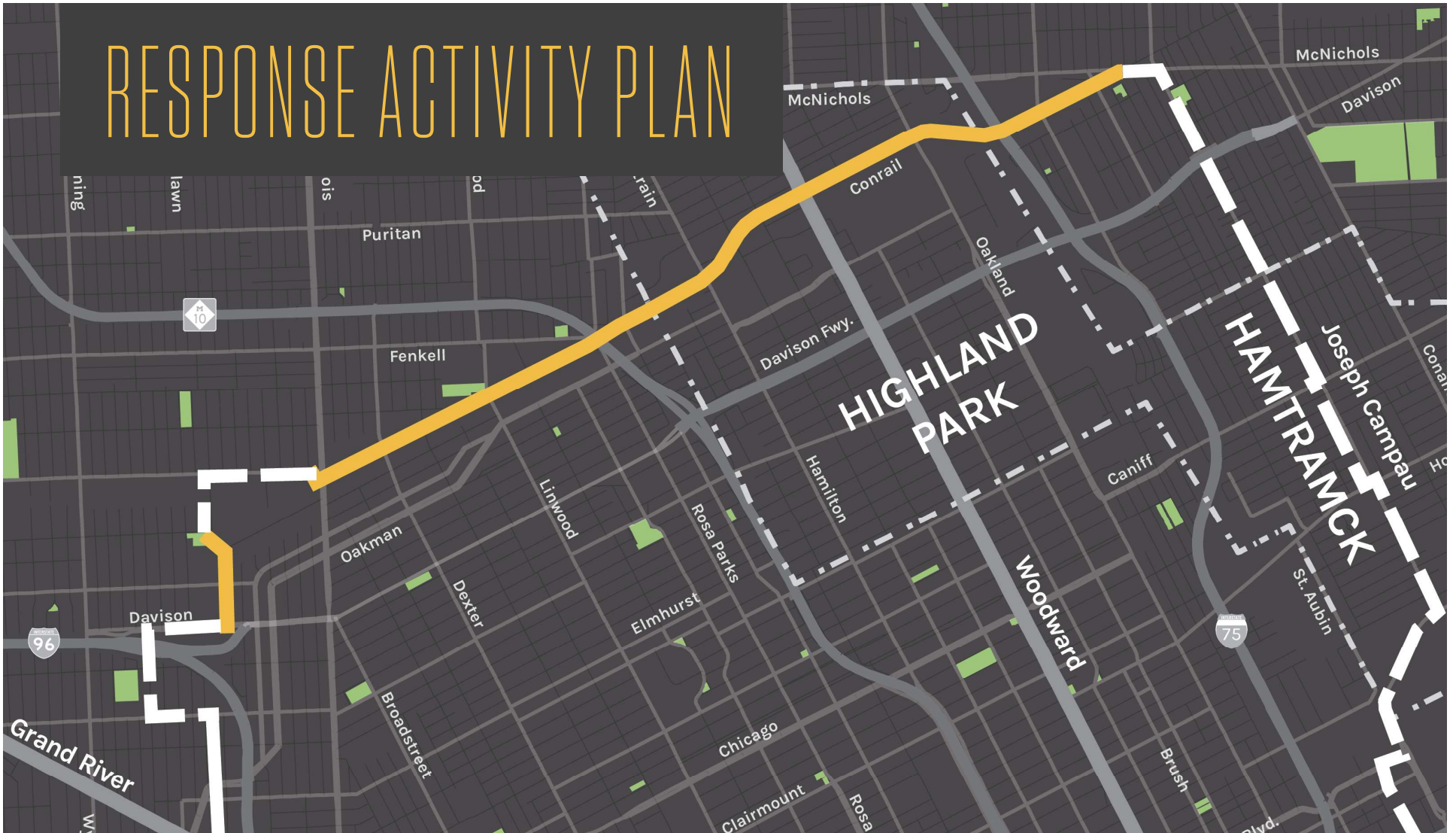
POLL 2

Where do you live?

JOE LOUIS GREENWAY

RESPONSE
ACTIVITY PLAN

RESPONSE ACTIVITY PLAN



Design underway



Design completed



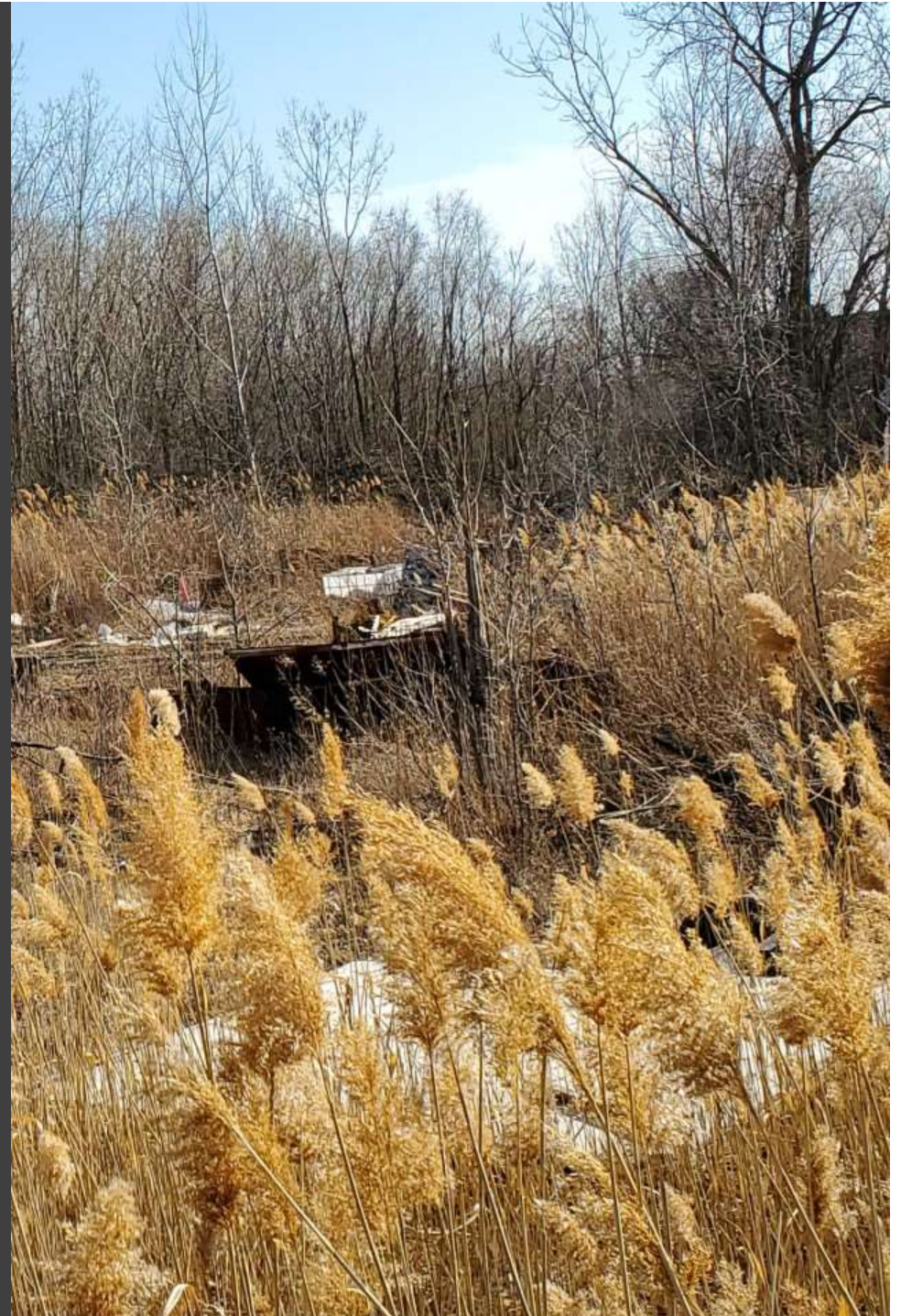
Future greenway

JOE LOUIS GREENWAY

WHAT IS IT?

A Response Activity Plan is a detailed report that includes the steps to remediate waste materials, soil, surface water, ground water, and vapor contamination at the property.

Implementation of this plan protects greenway users by reducing exposure to contamination.



WHY REQUIRED

Response Activity Plans for public projects require public meeting/participation under Section 20120d(2) to update the neighbors or surrounding communities on the proposed development and response actions or steps that will be taken to mitigate exposures to soil and/or groundwater contamination.





ENVIRONMENTAL ASSESSMENT

Testing soils occurred 2018-2021

- Drilled over 90 environmental borings
- Tested about 160 soil samples



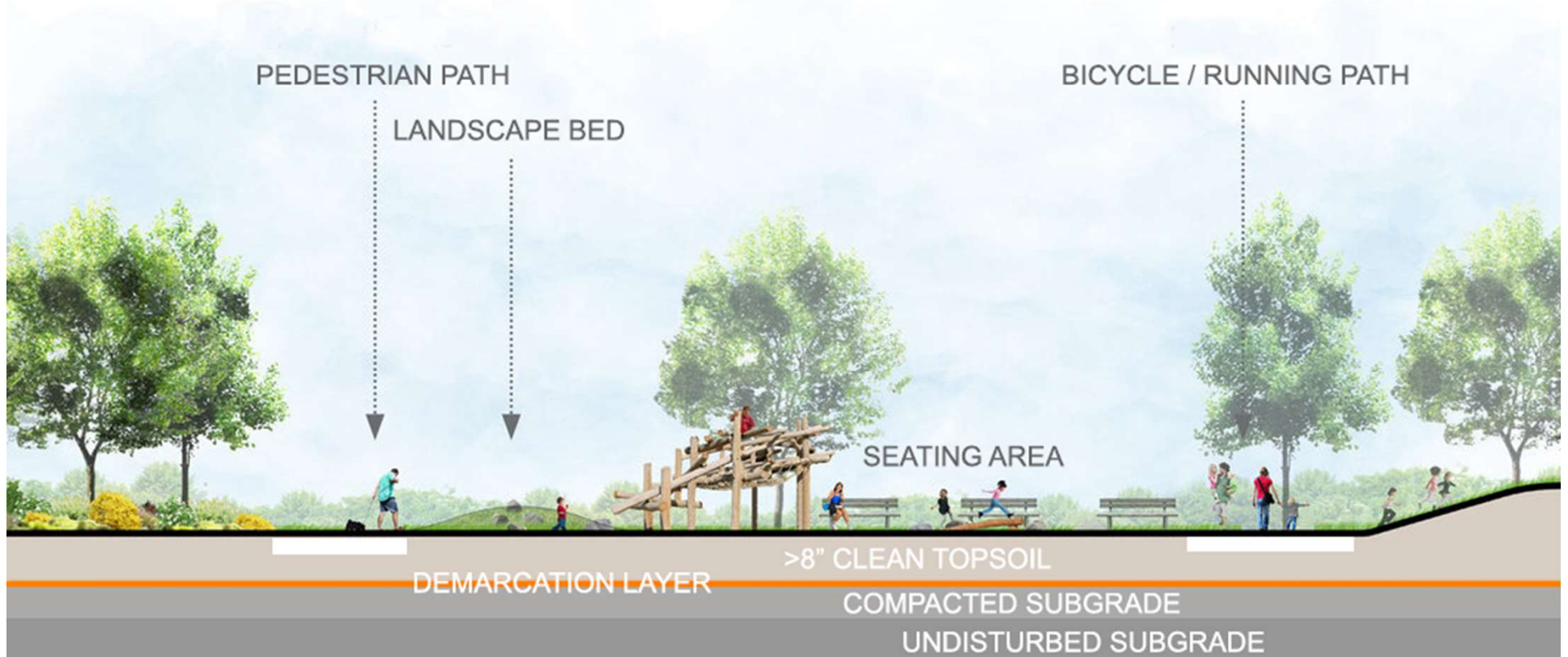
ENVIRONMENTAL FINDINGS

- Preliminary results show similar conditions as Phase 1
- Contamination typical of urban environments
- Found primarily heavy metals and petroleum hydrocarbons
- No evidence that contamination migrated off-site

ENVIRONMENTAL CLEAN-UP

Environmental cleanup required by the State (EGLE):

- Environmental assessment and analysis
- Removal and disposal of soil in some places; replacing with clean fill
- 8" minimum of clean soil and restored landscape over Greenway
- Brightly colored fabric separates clean soil from contamination





ENVIRONMENTAL CLEAN-UP

- Site will be restored with lawn, meadow, and trees
- Completed greenway will not pose unacceptable environmental risks to users

QUESTIONS – RESPONSE ACTIVITY PLAN

If you would like to ask questions, you may use the “raise hand” button at the bottom center of your screen. The moderator will unmute you when ready.



For voice call-ins, press *9 to raise your hand. The moderator will announce the last 3 digits of your phone number. After you hear your number, press *6.

If we did not get to your question,

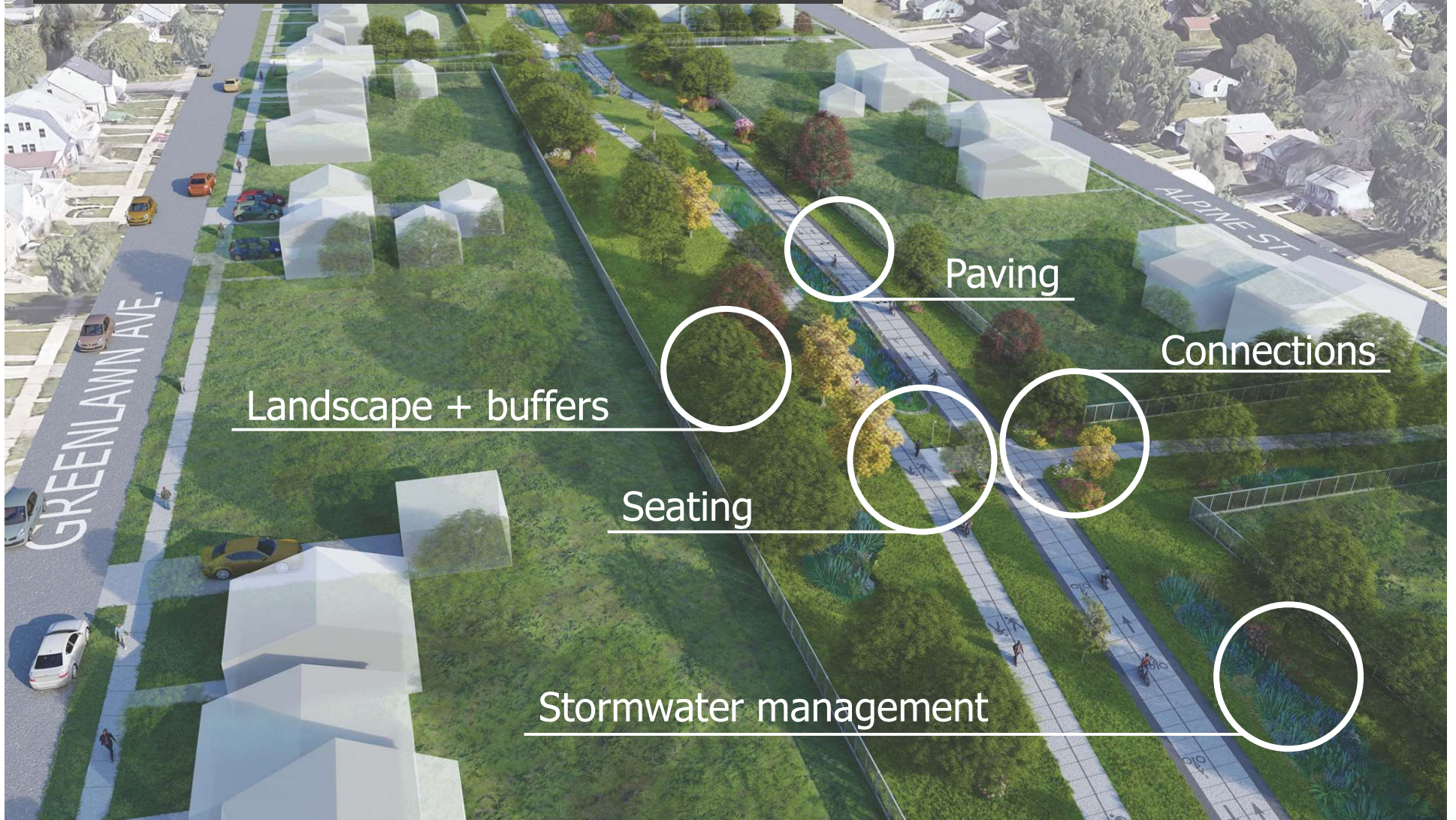
1. Type your question into the chat feature
2. Or leave message at 313-279-8248

All questions and answers will be posted at
joelouisgreenway.com

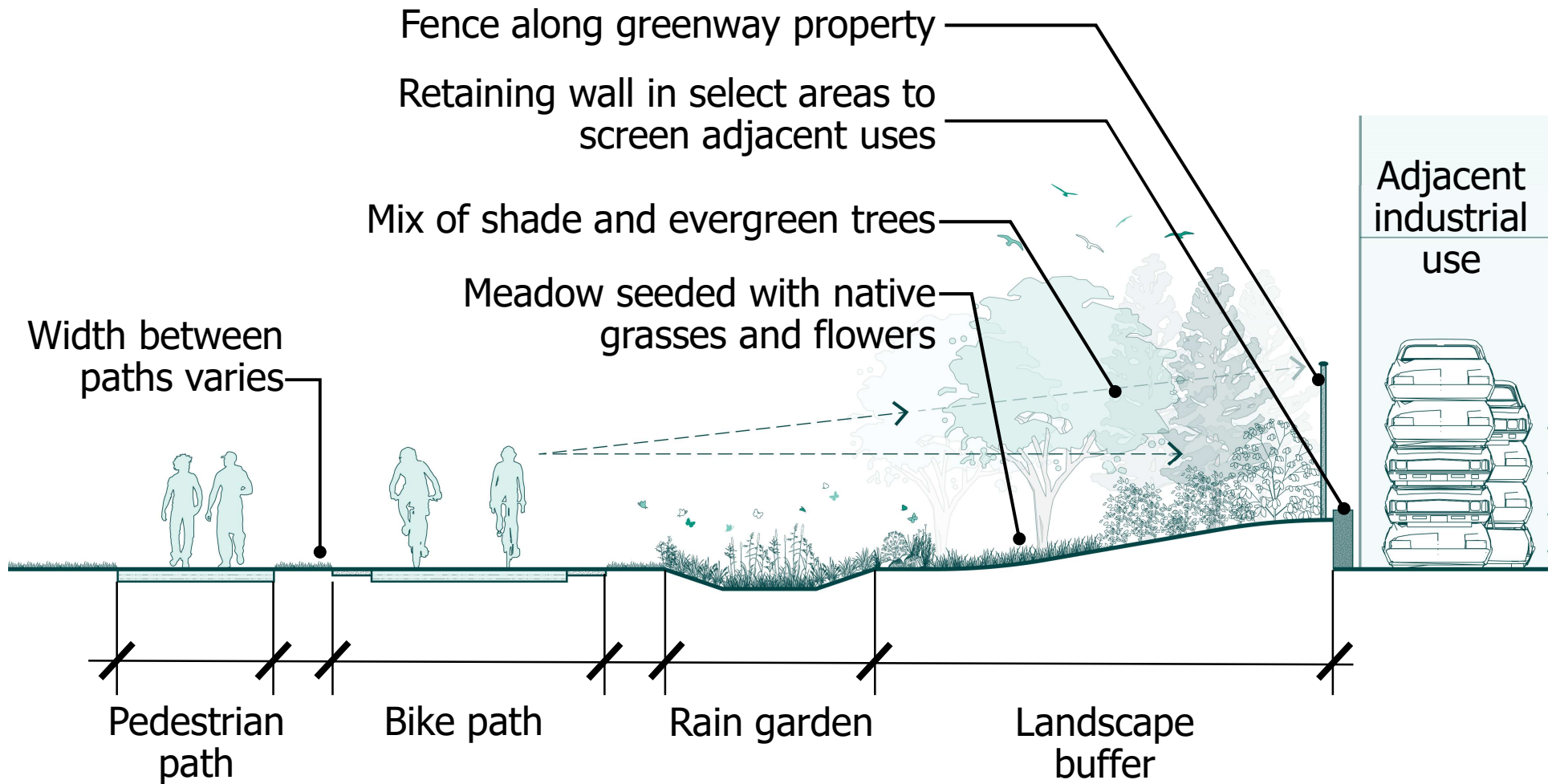
JOE LOUIS GREENWAY

PRELIMINARY
CONSTRUCTION PLANS

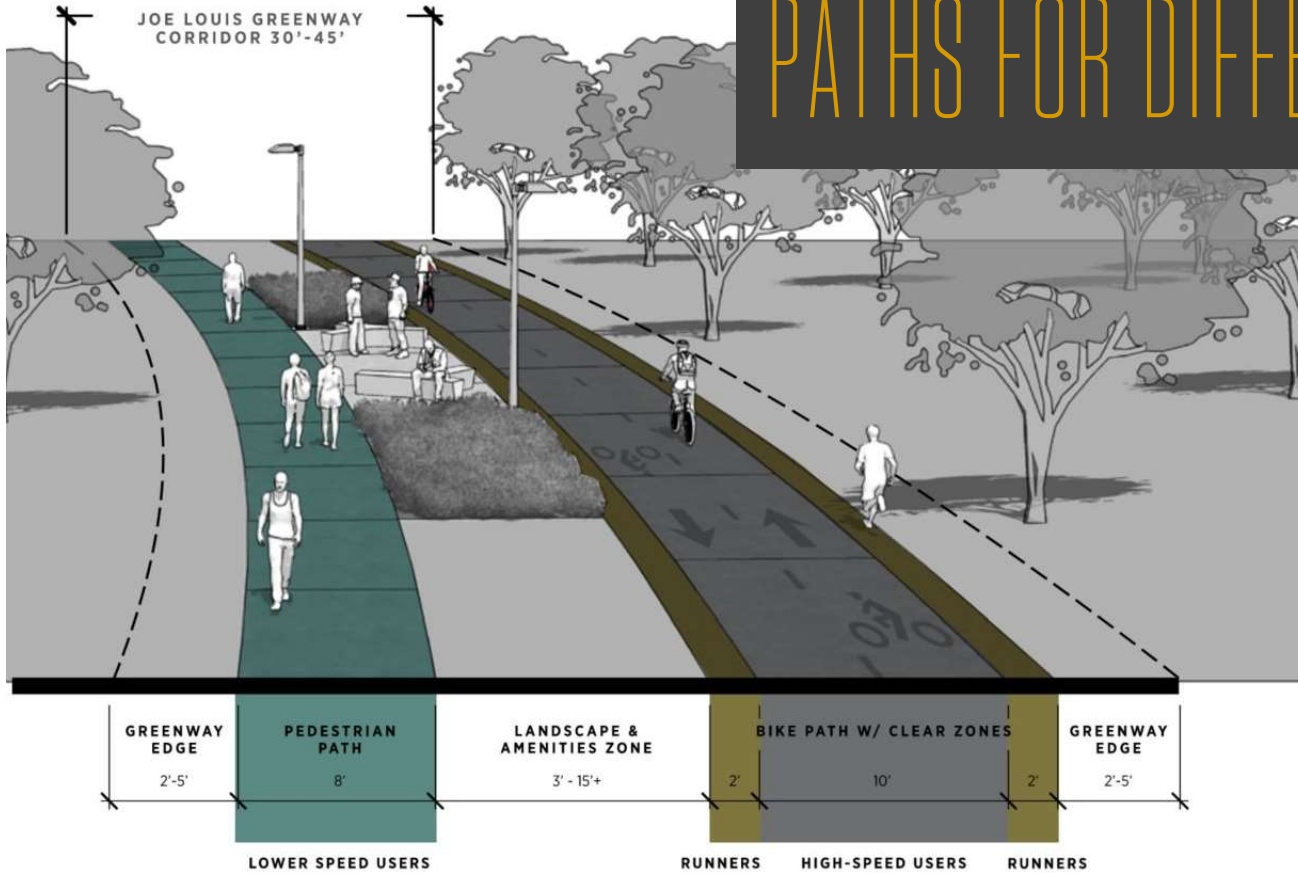
PRELIMINARY CONSTRUCTION PLANS



LANDSCAPE + BUFFER



PATHS FOR DIFFERENT USERS



Dedicated pedestrian path for slower users

Clear zone on edge of bike path for runners and joggers

Bike path for high-speed users such as bikes and scooters



SHARED USE PATH



Fitzgerald Greenway

Single shared-use path when the greenway corridor is too narrow for separated paths

Locations where unique site conditions require use of single path (like bridge crossings)

SEPARATED PATHS

LF0

Intervale Roselawn
Playground

Greenway
continues
on-street

SET Duct Manufacturing

SCHOOLCRAFT

Greenway
continues
on-street

DAVISON



Slide 33

LF0

Should we just call this 'Proposed Path?'

Lindsay Fercho, 2021-12-06T20:44:56.761

PROPOSED PATH



PROPOSED PATH



ROAD CROSSINGS

HIGH VOLUME

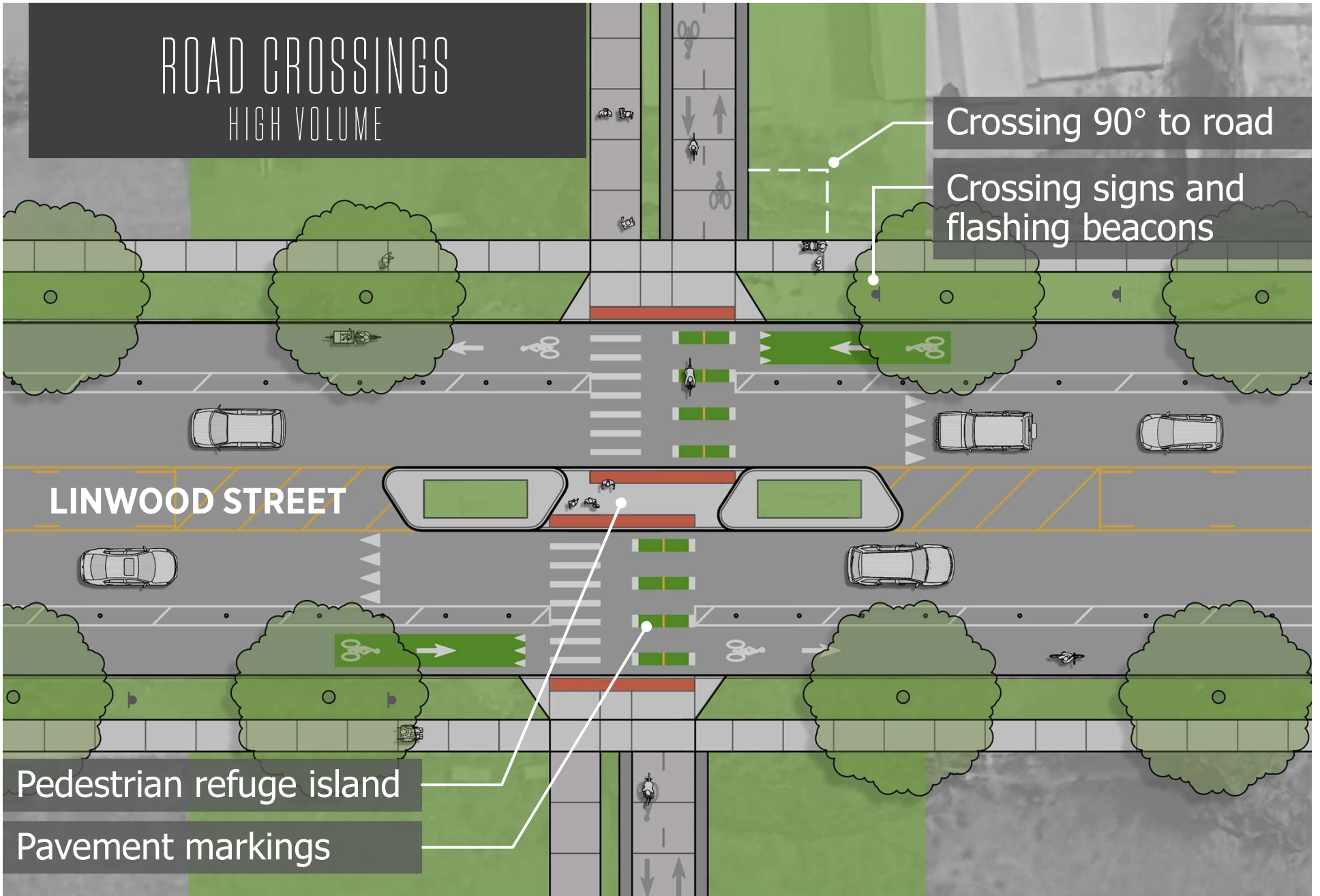
Crossing 90° to road

Crossing signs and flashing beacons

LINWOOD STREET

Pedestrian refuge island

Pavement markings



PROPOSED PATH



PROPOSED PATH



M-10 CROSSING





SEPARATED PATH

LFO

Ernest T Ford
Recreation
Center

3RD AVE.

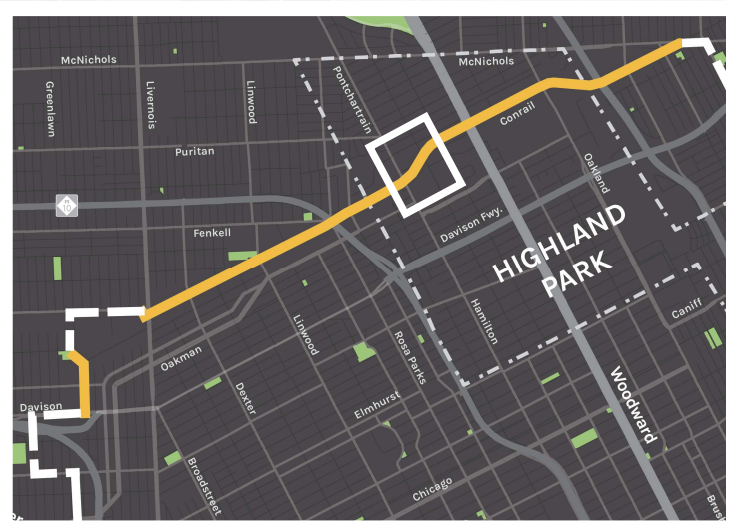
Recreation center connection

Ives
Field

HAMILTON

Loomis Armored

Becharas Brothers Coffee



Slide 40

LFO

Should we just call this 'Proposed Path'?

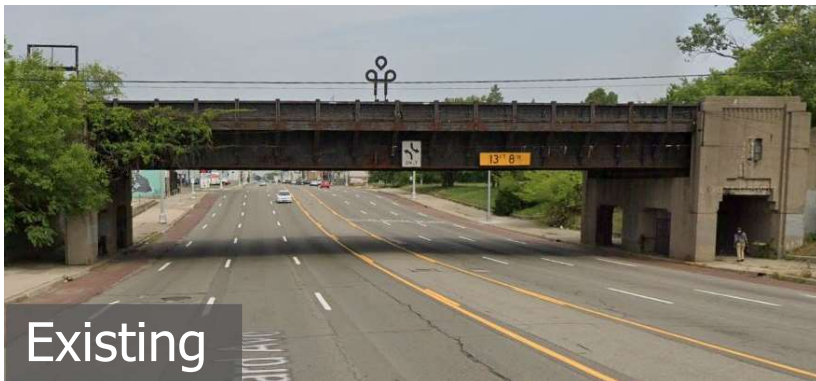
Lindsay Fercho, 2021-12-06T20:45:30.449

PROPOSED PATH

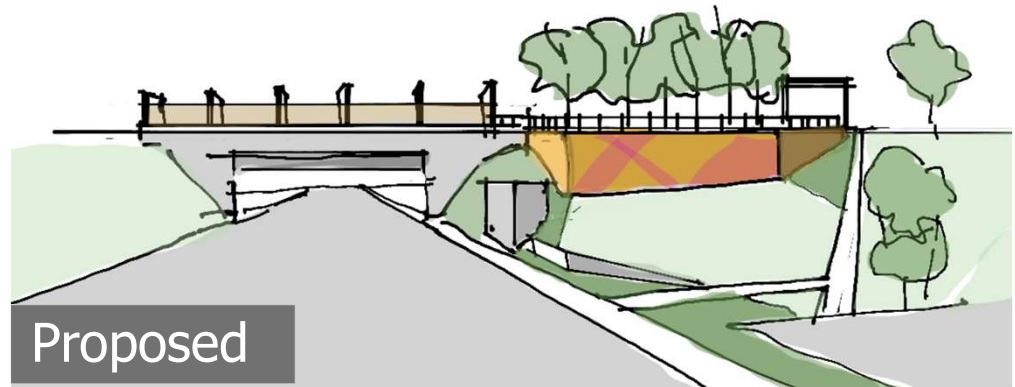


WOODWARD CROSSING

LFO



Existing



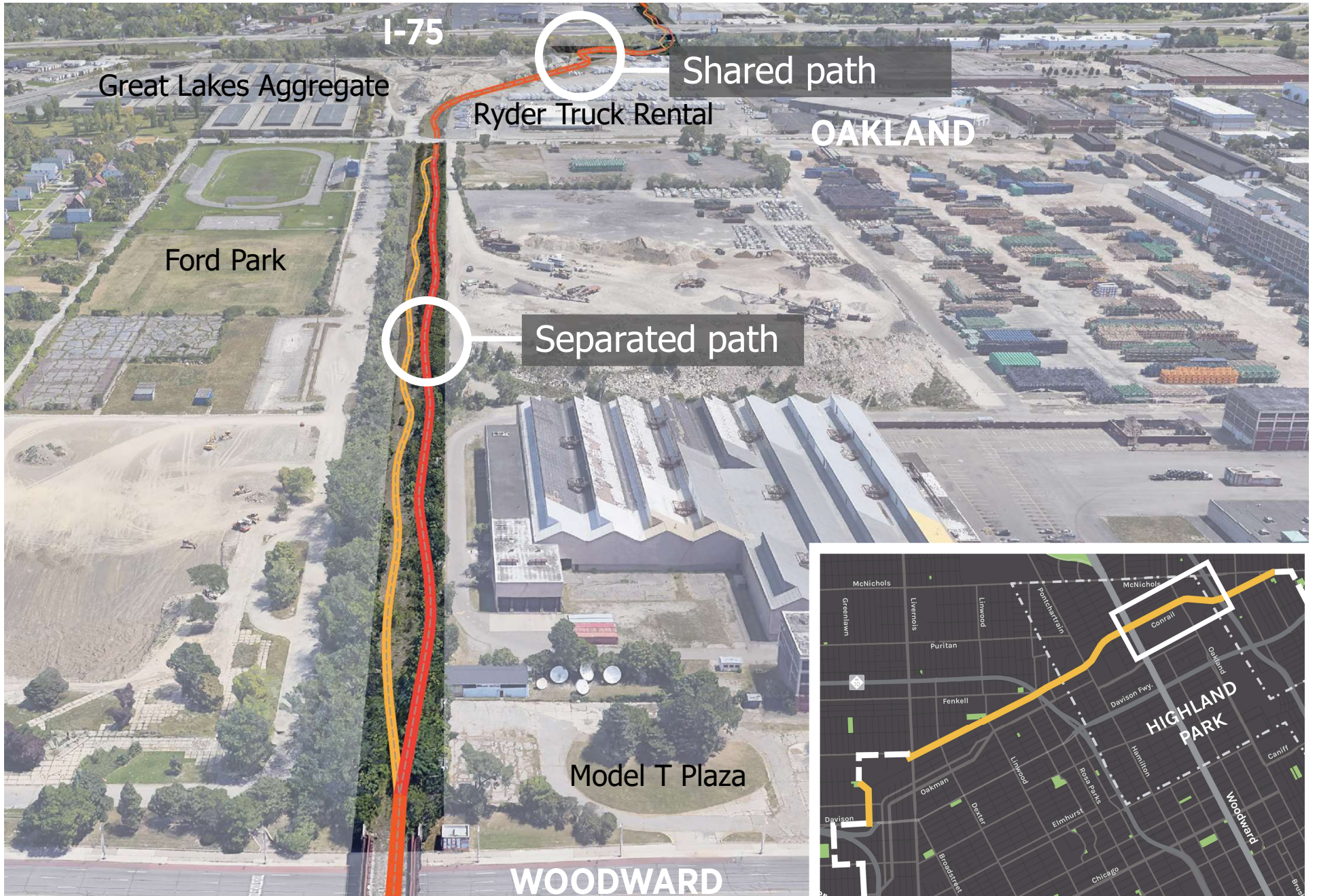
Proposed

Slide 42

LF0

Add dimensions to this graphic?

Lindsay Fercho, 2021-12-06T22:53:41.740



RAIL CROSSING





ROAD CROSSINGS

LOW VOLUME

LFO

Crossing 90° to road

Crossing signs and flashing beacons

GODDARD STREET

Raised speed table
Pavement markings



JOE LOUIS GREENWAY

Dennis Archer Greenway

Slide 46

LF0

Should crossings be their own color?

Lindsay Fercho, 2021-12-06T20:46:19.551



POLL 3

Are you a resident or
business owner?

LFO

Slide 47

LFO

Do you want to include these?

Lindsay Fercho, 2021-12-06T21:07:50.539

JOE LOUIS GREENWAY

SAFETY

FEATURES



SAFETY

- Maintained visibility
- Multiple access points
- Safe street crossings and bike lanes
- Security elements such as call boxes and cameras
- Lighting
- Wayfinding signage

SAFETY ELEMENTS

‘Safety is very important to me and I feel very comfortable using the existing greenways.’

Phase 1 community survey response

Call boxes



Photo: James Brown

POLL

Do you live in Detroit, Dearborn, Highland Park, Hamtramck or another city?

NEXT STEPS



JOE LOUIS GREENWAY

NEXT STEPS

Phase 1:

- Warren to Joy accessible by 2022 dependent on weather and construction
- Construction from Joy to Fullerton from 2022 to 2023
- Landscaping and park improvements 2023

Response Activity Plan:

Submit to State for environmental clean-up permits in 2022

Future phases:

- Design and construction as funding is secured

SCHEDULE

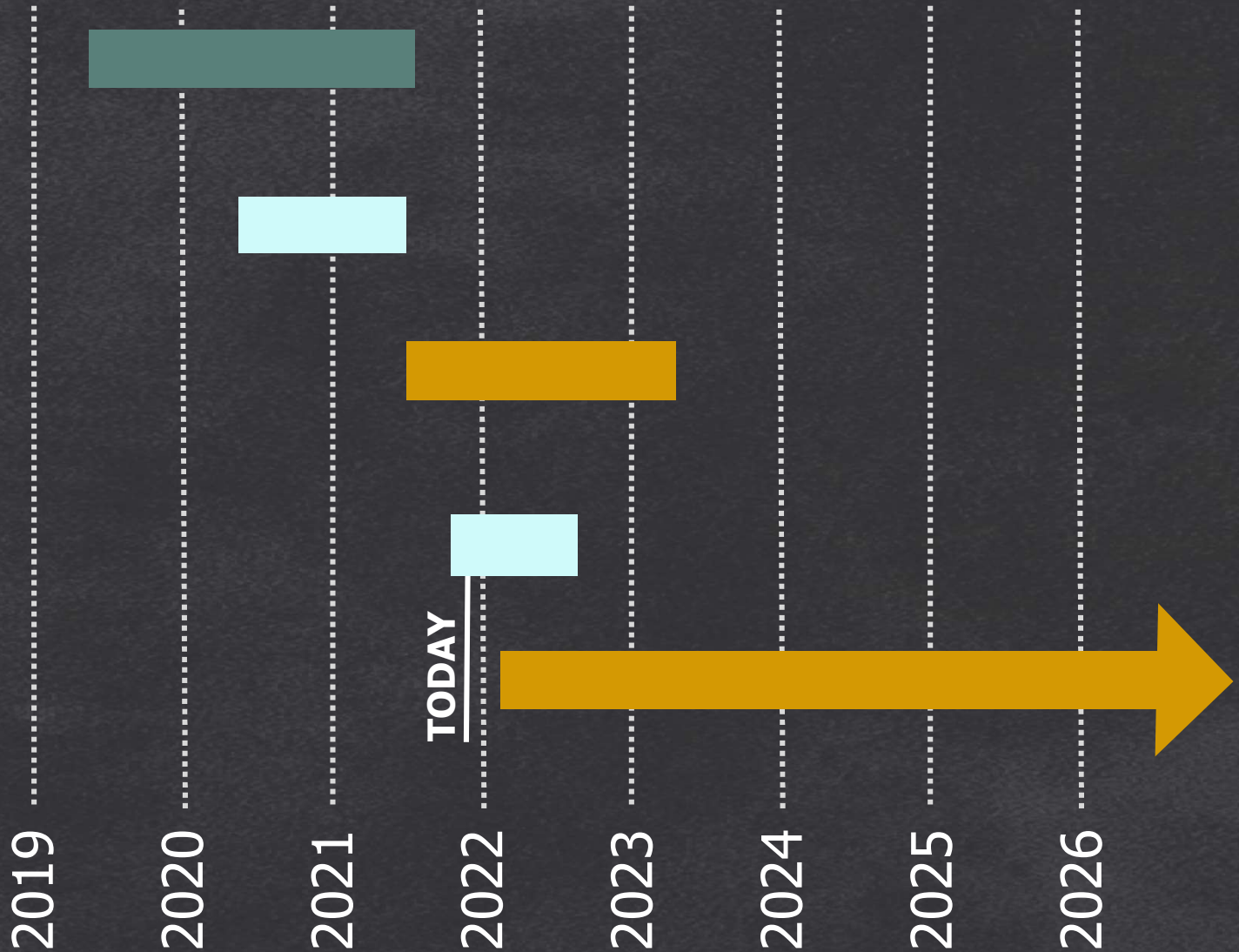
FRAMEWORK
+ PLANNING

DESIGN COMPLETE
(WARREN TO
FULLERTON)

CONSTRUCTION
(WARREN TO
JOY)

DESIGN UNDERWAY
(DAVISON TO EAST
McNICHOLS)

FUTURE
CONSTRUCTION



DISCUSSION

If you would like to ask questions, you may use the “raise hand” button at the bottom center of your screen. The moderator will unmute you when ready.



For voice call-ins, press *9 to raise your hand. The moderator will announce the last 3 digits of your phone number. After you hear your number, press *6.

If we did not get to your question,

1. Type your question into the chat feature
2. Or leave message at 313-279-8248

All questions and answers will be posted at joelouisgreenway.com



THANK YOU

STAY INVOLVED

Additional questions or comments:

joelouisgreenway@detroitmi.gov
313-279-8248

Sign up for emails:

[BIT.LY/SUBSCRIBE2JLG](https://bit.ly/subsctibe2jlg)

Follow us:

www.joelouisgreenway.com

Or

<https://Facebook.com/JoeLouisGreenway.com>