



EAST RIVERFRONT ASSETS STUDY

Civic Center:

Hart Plaza, Spirit Plaza & The Joe Louis Fist

Part of the DETROIT
PARKS & REC
STRATEGIC PLAN



April 21st, 2021

What is the purpose of the study?

- To create **vibrant, sustainable destinations** by understanding and unlocking the potential of underused parklands/sites along the riverfront.
- To build upon past riverfront studies
- To develop a **holistic, connective vision** and an **actionable strategic plan** for Detroit's riverfront.
- To learn **how you use and enjoy your favorite spaces along the riverfront now** and how you wish to do so in the future.

➤ WHO is conducting the study?

- City of Detroit General Services Department
- Detroit Parks and Recreation Division
- Consulting team headed by Detroit architecture firm ROSSETTI

➤ WHAT is the focus of the study?

- Assessing the current condition of parks/sites
- Determining the scope and cost of any needed repairs
- Creating an actionable plan for the long-term capitalization (i.e. funding), management, operation and maintenance of each park/site
- Working with stakeholders to develop a cohesive, strategic vision for the riverfront that enhances these public spaces

➤ WHEN will it take place?

- Now through December 2021

➤ This is **not** a detailed design study for each asset.



Schedule Overview



THE EAST RIVERFRONT

JEFFERSON VILLAGE

MARINA DISTRICT

RIVERSIDE MARINA,
ST. JEAN BOAT LAUNCH

GOLD COAST

OWEN PARK, ERMA
HENDERSON MARINA & PARK

GABRIEL RICHARD PARK

MT. ELLIOT PARK

ROBERT C. VALADE PARK

THE ARETHA

MILLIKEN STATE PARK AND HARBOR

MILLIKEN STATE PARK WETLANDS
CULLEN PLAZA (+ CAROUSEL!)

RIVERWALK GARDEN ROOMS

GM PLAZA

CIVIC CENTER

HART PLAZA, SPIRIT PLAZA,
JOE LOUIS FIST

Detroit River



JEFFERSON VILLAGE

MARINA DISTRICT

RIVERSIDE MARINA
ST. JEAN BOAT LUNGE

GOLD COAST

OWEN PARK, ERMA
HENDERSON MARINA & PARK

GABRIEL RICHARD PARK

MT. ELLIOT PARK

ROBERT C. VALADE PARK

THE ARETHA

MILLIKEN STATE PARK AND HARBOR

MILLIKEN STATE PARK WETLANDS

CULLEN PLAZA (+ CAROUSEL)

RIVERWALK GARDEN ROOMS

GM PLAZA

CIVIC CENTER

HART PLAZA, SPIRIT PLAZA,
JOE LOUIS FIST

THE EAST RIVERFRONT

Detroit River



JEFFERSON VILLAGE

MARINA DISTRICT

RIVERSIDE MARINA
ST. JEAN BOAT LUNCH

GOLD COAST

OWEN PARK, ERMA
HENDERSON MARINA & PARK

GABRIEL RICHARD PARK

MT. ELLIOT PARK

ROBERT C. VALADE PARK

THE ARETHA

MILLIKEN STATE PARK AND HARBOR

MILLIKEN STATE PARK WETLANDS

CULLEN PLAZA (+ CAROUSEL)

RIVERWALK GARDEN ROOMS

GM PLAZA

CIVIC CENTER

HART PLAZA, SPIRIT PLAZA,
JOE LOUIS FIST

THE EAST RIVERFRONT



JEFFERSON VILLAGE

MARINA DISTRICT

RIVERSIDE MARINA,
ST. JEAN BOAT LAUNCH

GOLD COAST

OWEN PARK, ERMA
HENDERSON MARINA & PARK

GABRIEL RICHARD PARK

MT. ELLIOT PARK

ROBERT C. VALADE PARK

THE ARETHA

MILLIKEN STATE PARK AND HARBOR

MILLIKEN STATE PARK WETLANDS

CULLEN PLAZA (+ CAROUSEL)

RIVERWALK GARDEN ROOMS

GM PLAZA

CIVIC CENTER

HART PLAZA, SPIRIT PLAZA,
JOE LOUIS FIST

**THE
EAST
RIVERFRONT**



Our goal is to think about ways to make individual parks and properties better and how to connect them to create a richly diverse yet seamless riverfront experience.

With this in mind, let's explore ...

CIVIC CENTER: SPIRIT PLAZA, HART PLAZA & THE JOE LOUIS MONUMENT

Spirit Plaza

The Monument
to Joe Louis

Hart Plaza

Bates St

Detroit Riverwalk

Detroit Riverwalk

Civic Center St

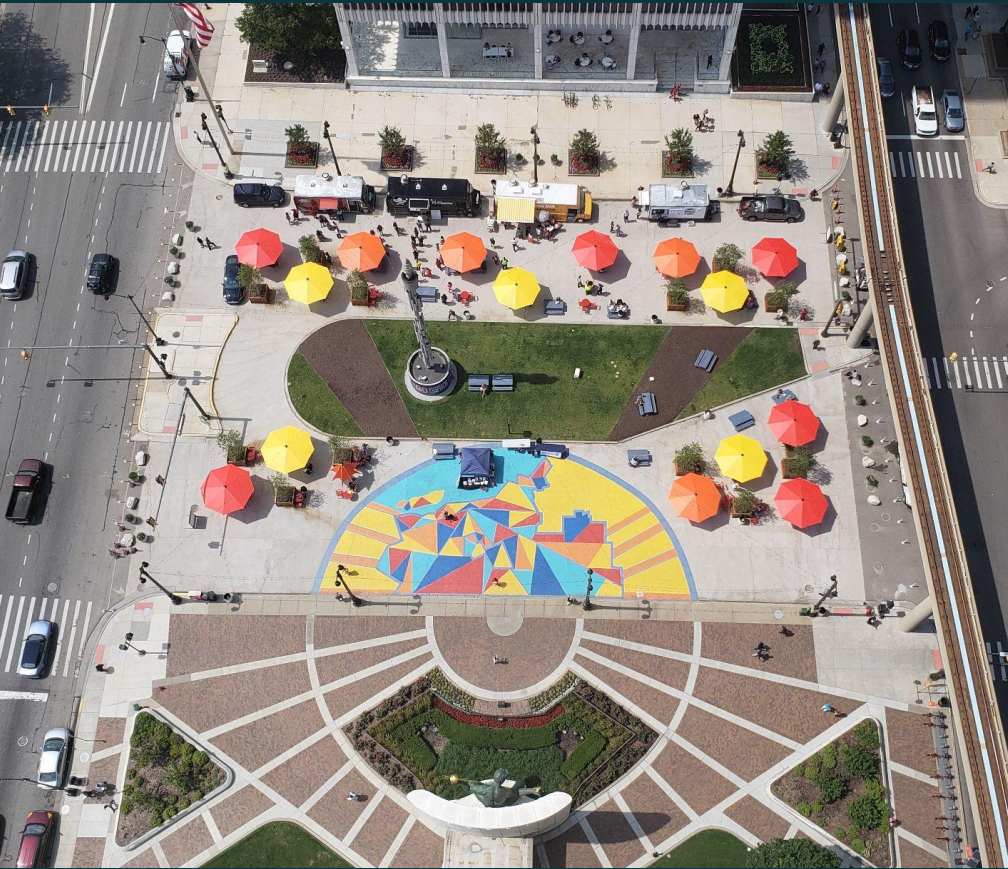




Photo source: The Michigan Chronicle

The Monument to Joe Louis “The Fist”

- Iconic sculpture located in the median at Jefferson Avenue.
- The 8,000-lb., 24-foot-long work by Robert Graham (properly named the “Monument to Joe Louis”) was a gift from Sports Illustrated Magazine to the city, dedicated in 1986.
- A popular tourist destination, although difficult to access.



Spirit Plaza

- Public space at the intersection of Woodward Avenue and Jefferson Avenue, across from the Coleman A. Young Municipal Center.
- The plaza is meant to serve as an extension of the space in front of the Spirit of Detroit.
- The space received infrastructure improvements in 2019.

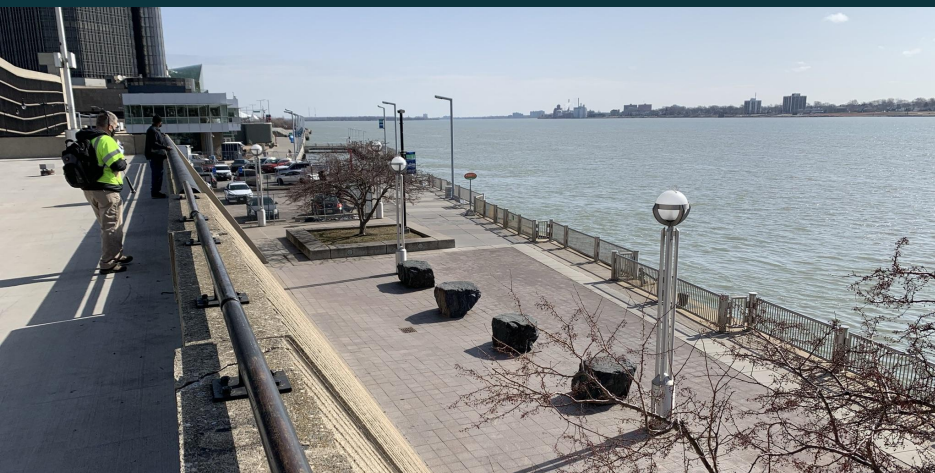
Photo source:

<https://associates.bloomberg.org/cities/detroit/creating-a-public-square-for-detroiters/>



Hart Plaza

- Opened in 1975 and named after the late Michigan Senator Philip A. Hart.
- The riverfront venue hosts summer festivals, concerts and special events
- Contains important sculptures and monuments including the Dodge Fountain, designed by Isamu Noguchi.
- Current challenges in Hart Plaza as a public space and venue include extensive paved surfaces and lack of green areas.



Questions to explore for the Monument to Joe Louis “The Fist”:

01

Should this sculpture be moved to a location with easier access?

02

If yes, where should it be placed?

03

If no, why not?

Questions to explore for Spirit Plaza:

01

Have you visited Spirit Plaza and if so, what events or activities have you participated in there?

02

How do you access Spirit Plaza? If you drive, where do you park?

03

Do we need to improve access? Do we need to improve parking?

04

What do you love about Spirit Plaza and not want to change?

05

What would you change about Spirit Plaza if you could?

Questions to explore for Hart Plaza:

What is your favorite memory of Hart Plaza?

Questions to explore for Hart Plaza:

01

What events do you attend at Hart Plaza and how many do you attend during the year?

02

How important is it to you that the city have:

- A central community and ethnic cultural event space?
- A functional outdoor large event facility that can attract local, regional, national, and international events?

03

How do you access Hart Plaza?
If you drive, where do you park?

04

Do we need to improve access?
Do we need to improve parking?

05

What would you not want to change about Hart Plaza?

06

What would you change about Hart Plaza if you could?

**What other questions should we
be asking?**

Who else should we talk to?



How Your Input Will Be Used

This final product will be included as part of the Parks & Recreation Strategic Plan and outline funding to sustain these assets for the next 5 years.



Next Steps



 **Next steps: Survey coming soon!**

 **How to Contact Us**

By phone: 313-241-4080

By email: Maria Galarza- galarzam@detroitmi.gov

 **Where to find more information**

www.detroitmi.gov/eras

Thank you!