



# Detroit Police Department **Officer-Involved Shootings**

Presented by:

Captain Lena Liddell, Internal Controls

Lieutenant Kenneth Gardner, Homicide Task Force



Chief James E. Craig



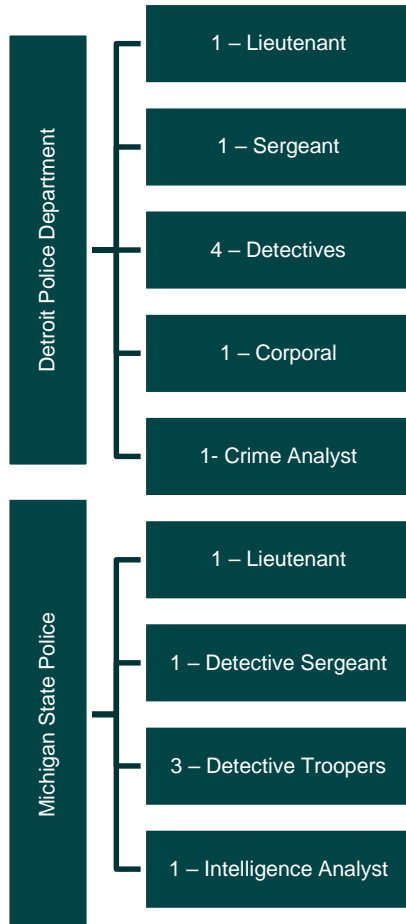
# OVERVIEW

## Officer-Involved Shooting

The discharge of a firearm by a sworn law enforcement officer or the discharge of a firearm by a suspect at a sworn law enforcement officer.



# ORGANIZATIONAL STRUCTURE/RESPONSIBILITIES



## Investigations include:

- Investigation of Detroit police officer involved fatalities
- Investigation of Detroit police officer involved non-fatalities
- Investigation of shots fired at or by police officers (including those that do not take effect).
  - Except animal involved shootings and an accidental discharge of a firearm.
- Investigation of all other police-involved shootings by an outside agency within City of Detroit; to include the local, state, and federal level.

**HTF handles investigation regardless if the officer(s) are on- or off-duty.**



# TEAM SPECIALIZATIONS

## **The Homicide Task Force is specialized in:**

- Surveillance
- Raid-Trained – execution of warrants that do not meet the threshold for activation of SRT
- Video Extractions
- Coordination with various law enforcement agencies (local/state/federal) for a thorough investigation



# COORDINATION OF APPREHENSION

**Rapid Deployment of specialized units and resources, to include working relationships with the following entities:**

- SRT
- HQSU
- Special Ops
- On-Call APA
- BWC Portable Unit
- Embedded Video Technician
- VCTF
- NIBIN
- Evidence Analysis/Lab
- FIU

Provides real time updates for deployment, response, and investigation information.



# WHAT WE DO

## **Information Collection**

### **Evidence Collection** (Exculpatory & Inculpatory)

- Firearms – Restricted moving/handling
- Uniforms – Restricted touching
- BWC and/or scout car video
- Equipment dropped by member

### **Arrest Coordination** (Utilizing HQSU, VCTF & US Marshalls)

### **Warrant Preparation and Submission**

### **Court Presentation**

### **Coordination with Force Investigation Unit**



## **FIU STATISTICS,** PRESENTED BY CAPTAIN LENA LIDDELL, INTERNAL CONTROL

Force Investigation handles the administrative aspects of the investigation that will determine whether department policies have been violated, recommend changes in duty status, and recommend discipline, if warranted.

**These are two separate investigations (1 Criminal and 1 Administrative):**

Force Investigation responds to the scene along with the Homicide Task Force. Force Investigation completes its investigation after the criminal investigation has been concluded by the Homicide Task Force.

**Detroit Police Officers  
Law Enforcement Officers Killed and Assaulted**

	<b>2018</b>	<b>2019</b>	<b>2020</b>
<b>Number of suspects that fired shots at officers</b>	<b>7</b>	<b>10</b>	<b>2</b>
<b>Number of officers shot non-fatally</b>	<b>3</b>	<b>2</b>	<b>1</b>
<b>Number of officers fatally shot</b>	<b>1</b>	<b>2</b>	<b>0</b>
<b>Number of officers killed by other felonious means</b>	<b>1</b>	<b>0</b>	<b>0</b>
<b>Number of officers that fired shots at perpetrators</b>	<b>15</b>	<b>17</b>	<b>3</b>
<b>Number of subjects that <b>DPD</b> officers fatally shot</b>	<b>2</b>	<b>1</b>	<b>0</b>
<b>Number of subjects that <b>DPD</b> officers <b>NON</b> fatally shot</b>	<b>3</b>	<b>7</b>	<b>1</b>





Questions?