

West Warren Green Infrastructure and Sewer Separation Project



**Neighborhood Meeting
May 28, 2020**



**Water & Sewerage
Department**

Team Introduction

Department of Water and Sewerage



Palencia
Mobley



Lisa
Wallick



Barry
Brown



Sarah
Stoolmiller



Mona
Ali
District 7 Manager

Dept. of Neighborhoods

OHM Advisors

Greg
Kacvinsky

Patrick
Droze

Marguerite
Novak

Meeting Agenda

Full Project Overview 15 Mins

Team and Project Introduction

Project Purpose

Project Outcomes

Project Schedule

Pause for Questions 10 Mins

Rouge Park Impacts 15 Mins

Parkland Street

South Rouge Park

Discussion 10 Mins

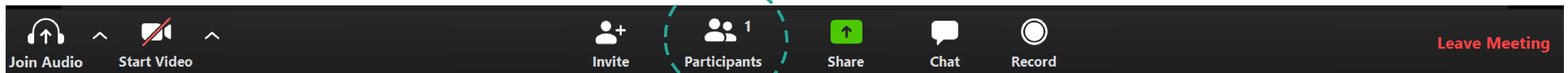


Meeting Protocols

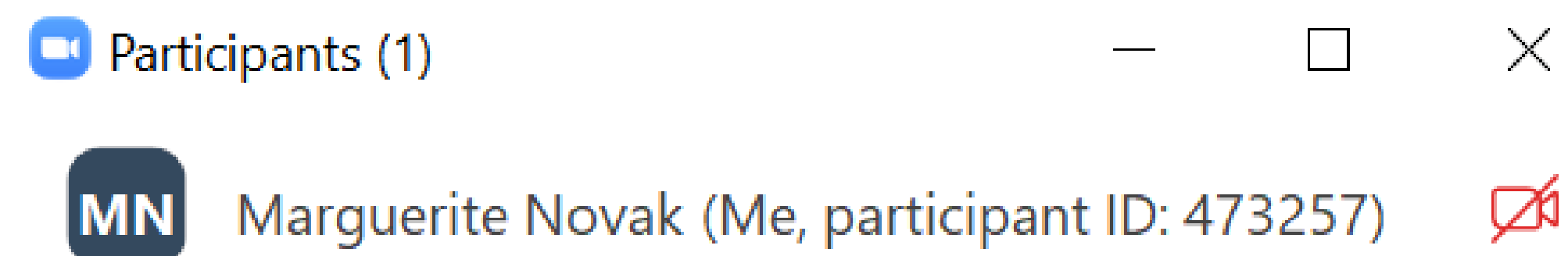
- **All participants will be muted** during the presentation to ensure a smooth and successful meeting.
- We will be asking for your input throughout the presentation. We ask that you please wait for these opportunities to ask questions.
- If you have further questions, please **email** swgroup@detroitmi.gov or text **313.573.3320**

'Raise Hand' Activity

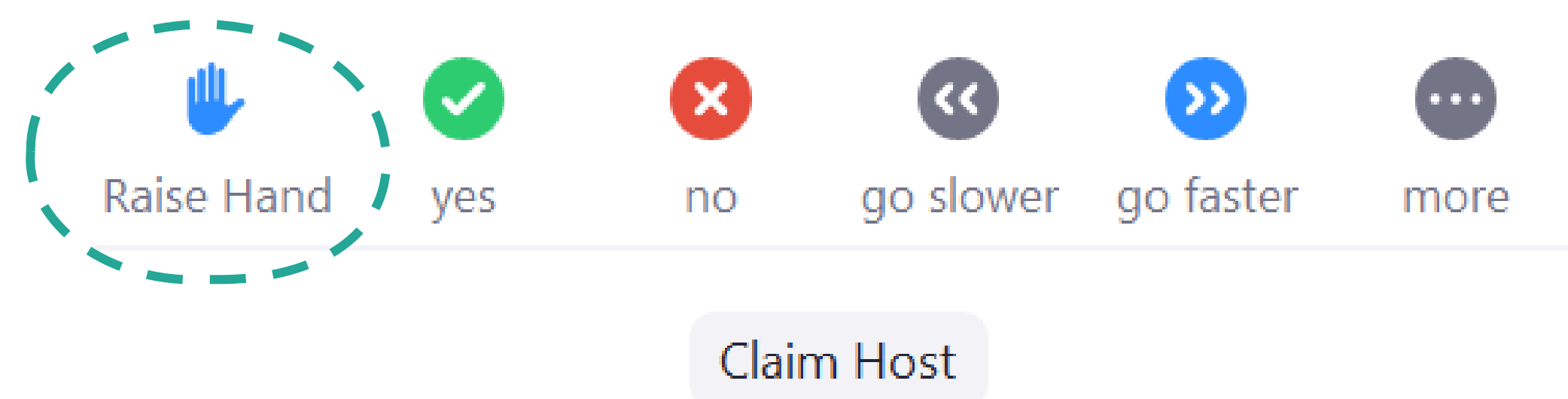
1



2



If dialing in, press *9 to raise your hand



Polling Demonstration

Question:

Have you heard of this project?



Please use the polling feature to answer the question.

West Warren Green Infrastructure & Sewer Separation Project Purpose



Meet State permit requirements for reductions in stormwater runoff to sewers



Reduce sewage overflows to Rouge River



Improve water quality of Rouge River



Reduce Neighborhood Flooding

State Regulatory Requirements

- Reduce the occurrence of neighborhood flooding events
- Reduce combined sewer overflows to the Rouge River near at the Warren Avenue bridge.
- We do this by:
 - **Redirecting** runoff from roadways by intercepting catch basins with new dedicated storm sewer
 - **Plan** storm infrastructure for future disconnections (rooftops, footing drains) within the neighborhood

West Warren Green Infrastructure & Sewer Separation Project

- Multiyear, \$28M construction project
- Construction of **New Storm Sewer System** and **Partial Separation** of the existing Combined System
- Work in road right of way to collect storm runoff
- Full restoration of impacted areas (lawns, walks and roadways)
- Stormwater Quality Practices within Rouge Park





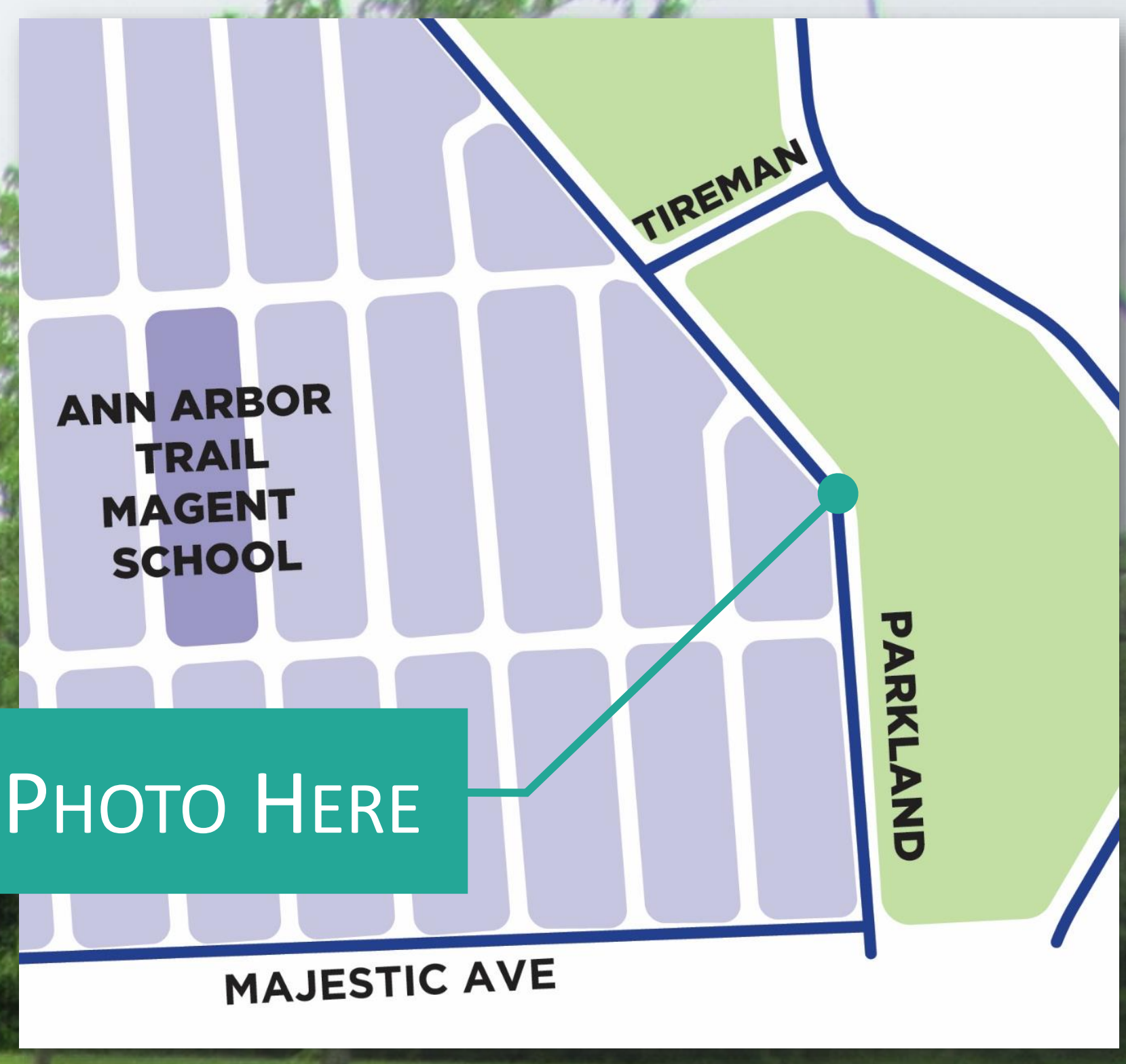
Project Outcomes

What does this mean for me?



Upgrade stormwater infrastructure to modern standards





PARKLAND ST

Reduce neighborhood flooding

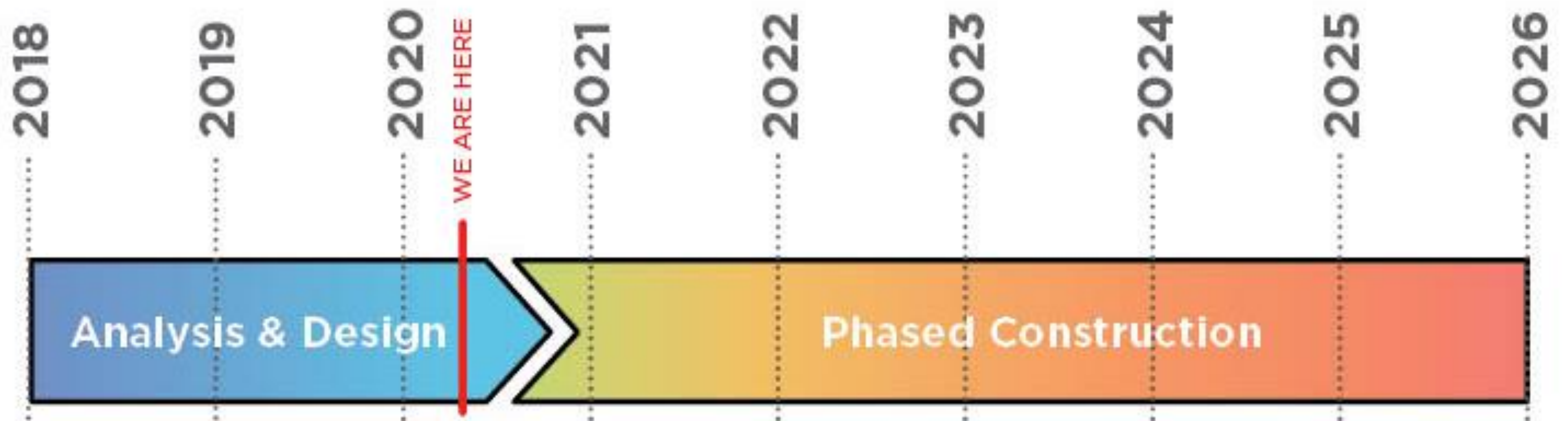


**Enhance
neighborhood
walkability**



Improve Rouge Park landscape and offerings

Project Schedule





Question:

Do you have any other questions regarding the project overview?

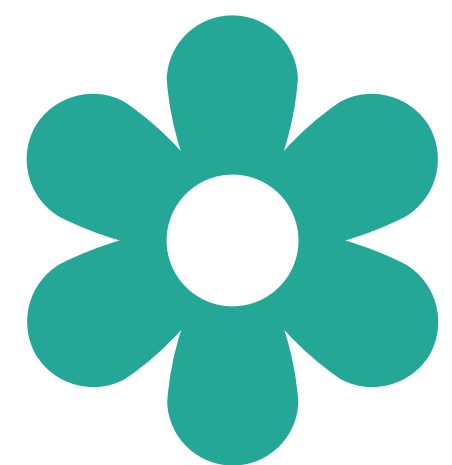


Please use the 'raise hand' feature to ask a question.

Rouge Park Goals



Limit disturbance and respect the Butterfly Garden, Prairie Trail and other park elements



Restore construction areas with sustainable and beneficial plantings



Design improvements to complement the Far West neighborhood and Rouge Park

Rouge Park Impacts

Park impacts are divided into three areas:

Area A – Constance Basin

Area B – Parkland Street

Area C – South Rouge Park



Area A – Constance Stormwater Basin

Final Phase of a stormwater project that included new storm sewer on Constance Street

Stakeholders Engaged in 2016 – Design protects key features in Rouge Park

- Butterfly Garden and Prairie Pathway
- Maintain area hydrologic patterns

Provides water quality improvements for storm runoff prior to discharge to Rouge River

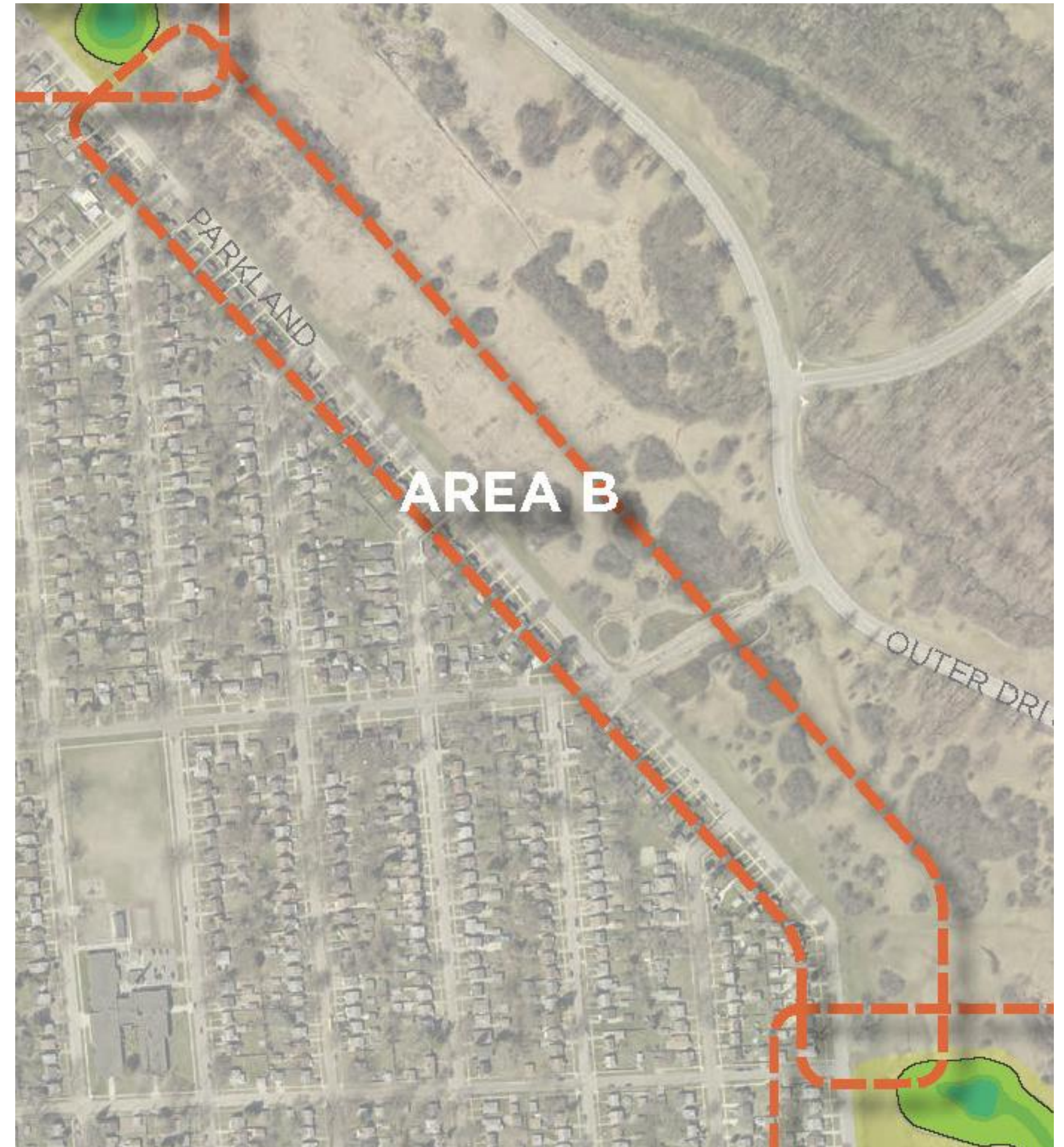
Area B - Parkland

Large diameter storm sewer
extending from Belton to Sawyer

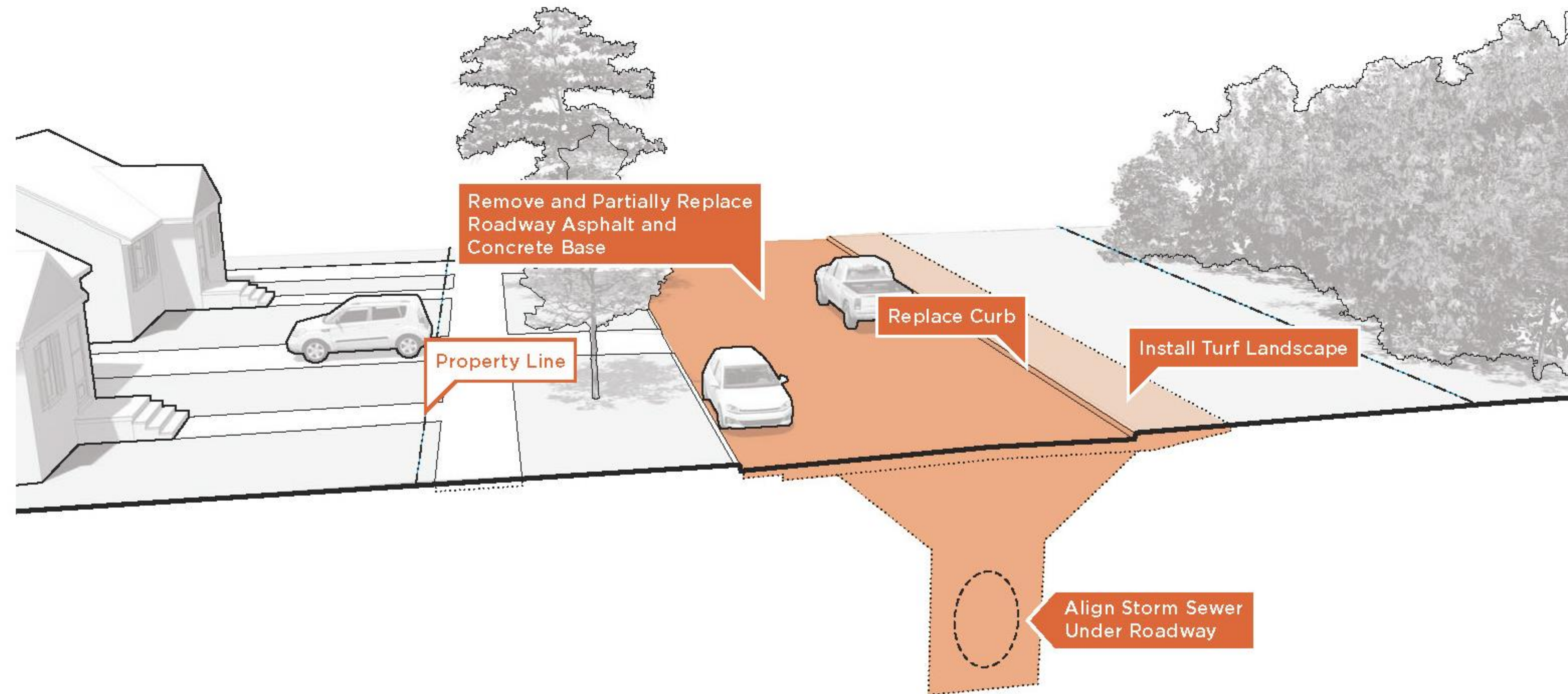
Sewers at all side Streets

Roadway replacement in areas
of Impact

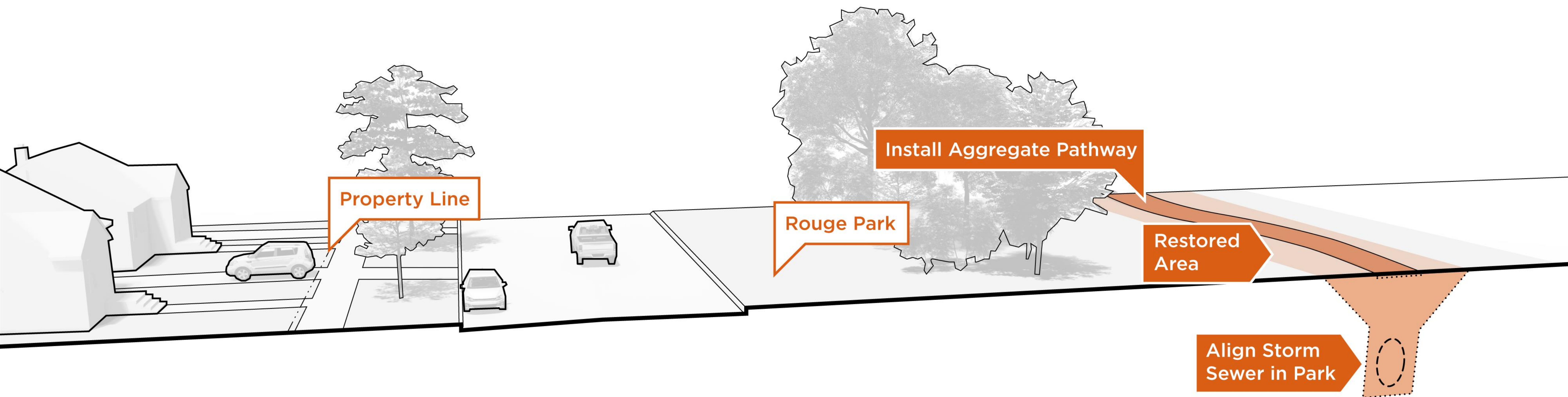
Potential for connections to
Rouge Park



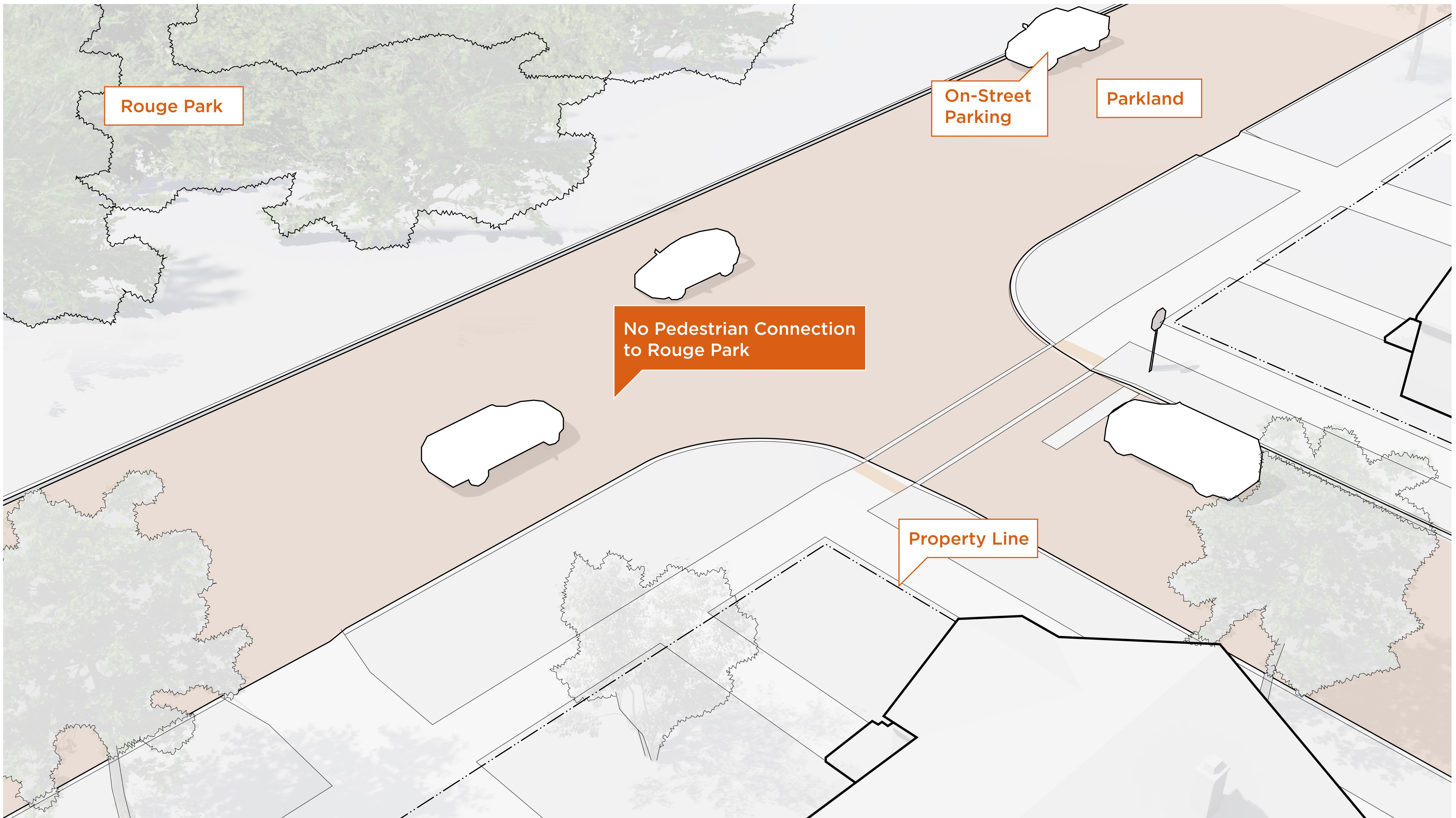
Parkland – Option 1



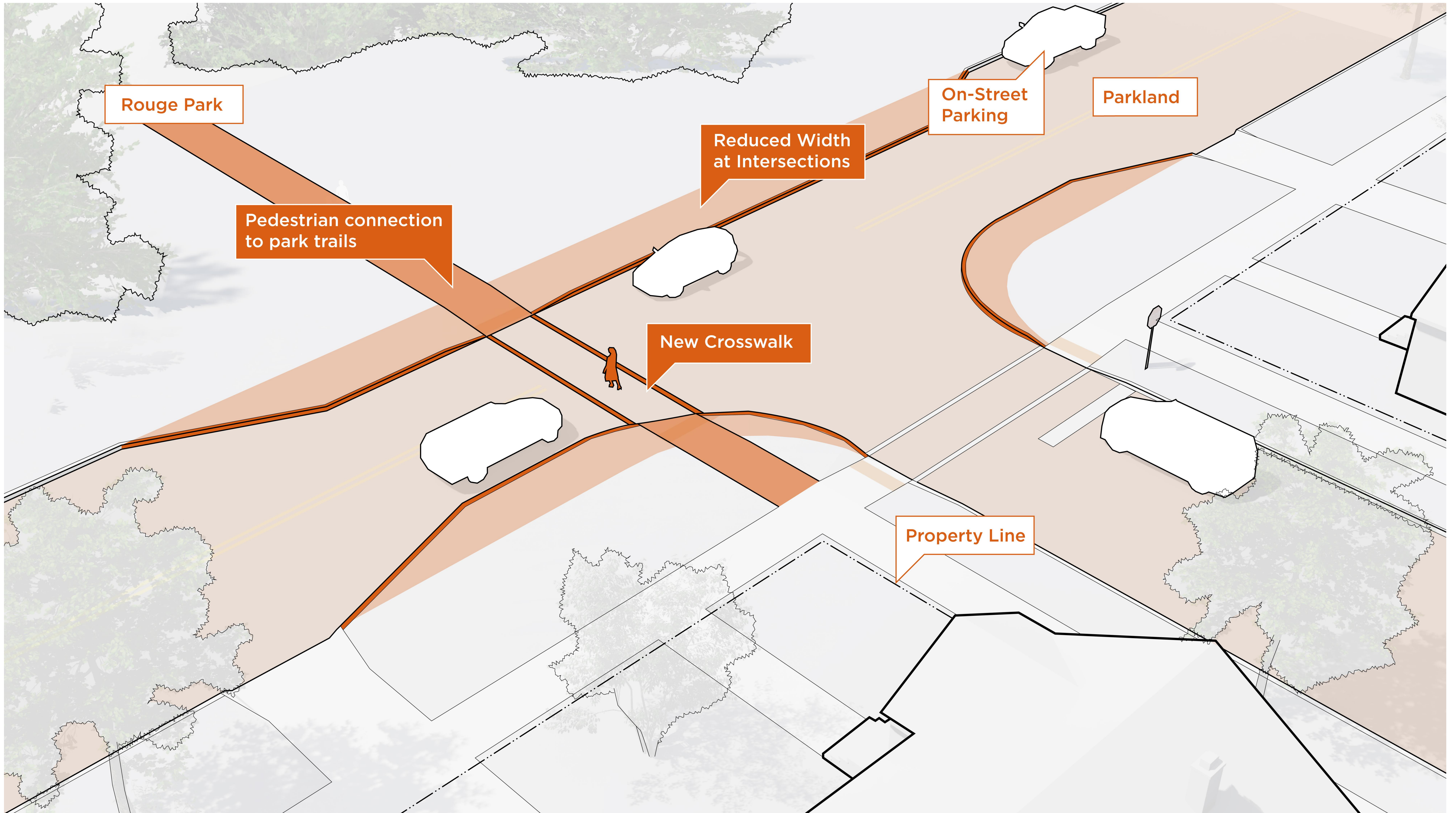
Parkland – Option 2



Parkland Intersection – Existing Conditions

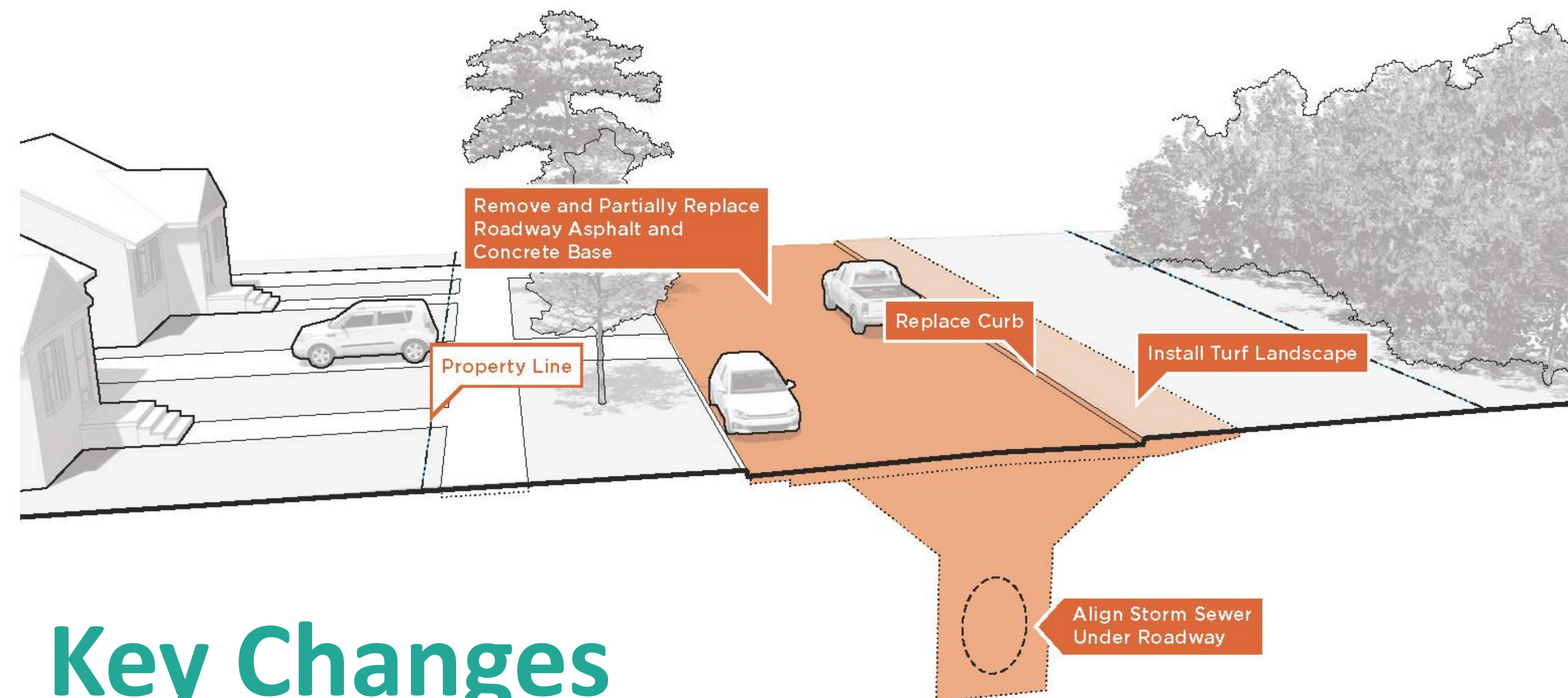


Parkland Intersection – Proposed Changes



Parkland Options Comparison

Option 1 – In Street



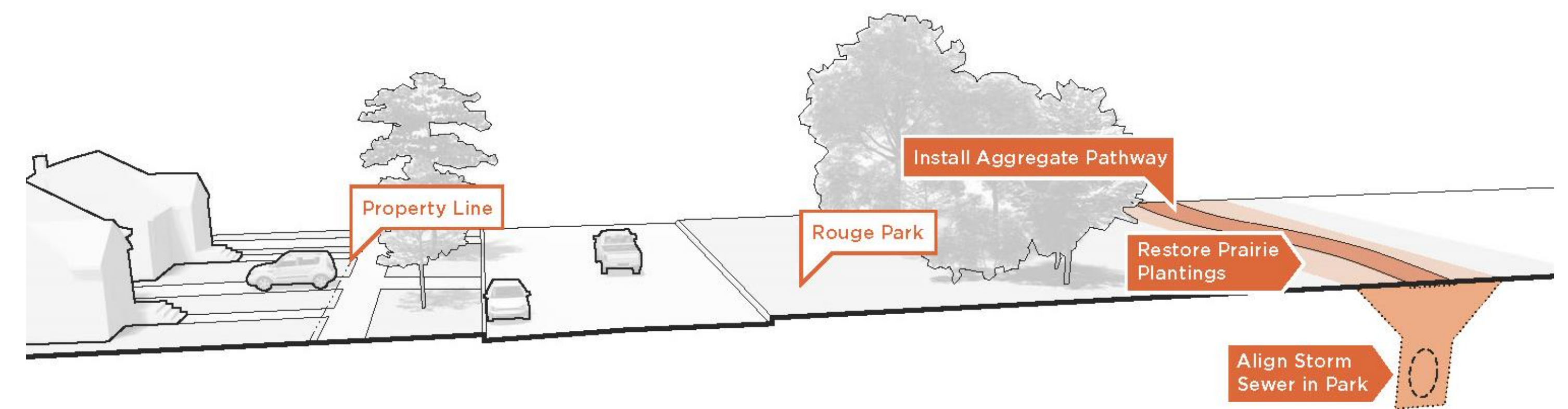
Key Changes

- Reduced road width and speed control
- Improved crosswalks
- Reconstruction roadway

Construction Impacts

- Reduced access to Parkland during construction
- Longer duration for construction

Option 2 – In Park



Key Changes

- Removal of some trees in park
- Improved intersection crosswalks and traffic calming
- North- south Access pathway

Construction Impacts

- Reduced neighborhood impacts during construction



Questions?

Do you have any questions
regarding the Parkland Options?

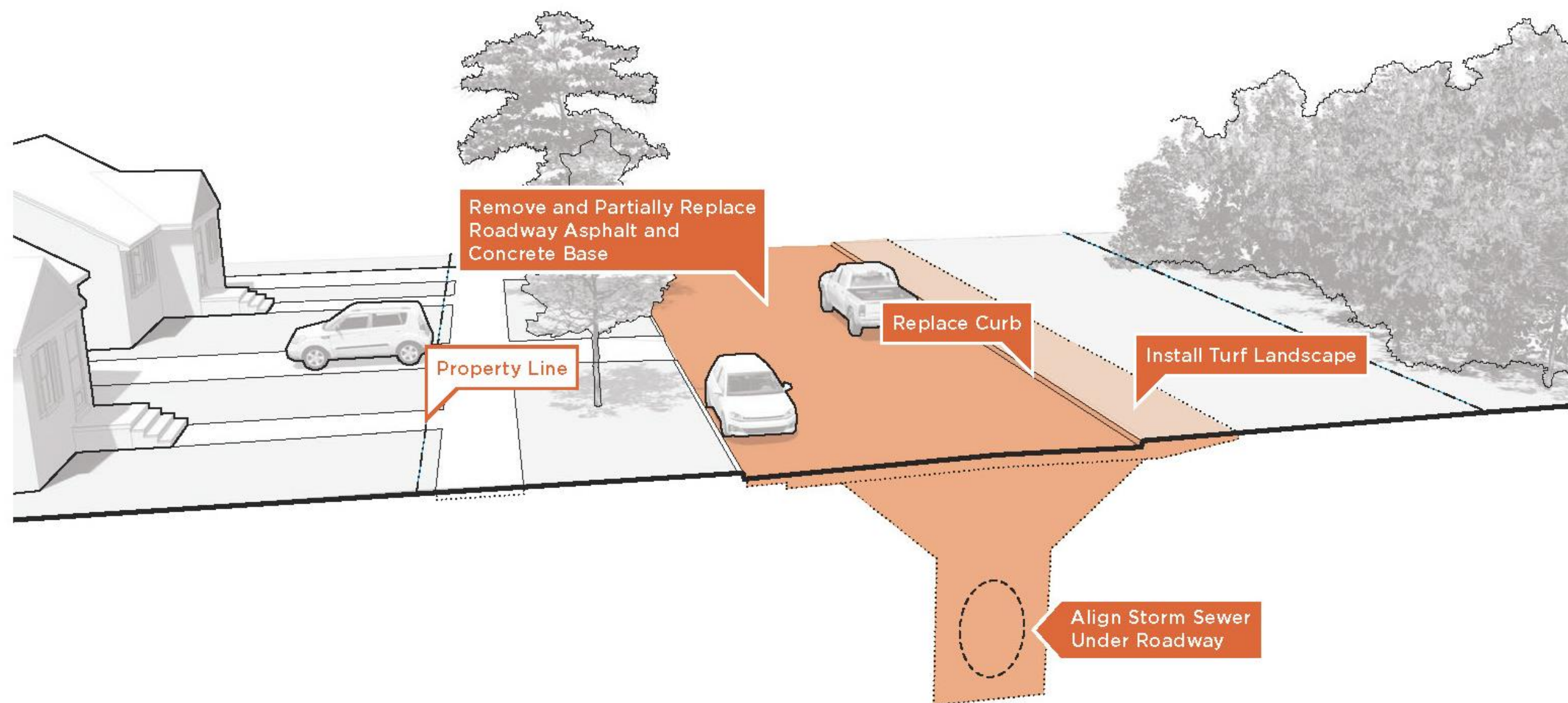


Please use the 'raise hand' feature to
ask a question.

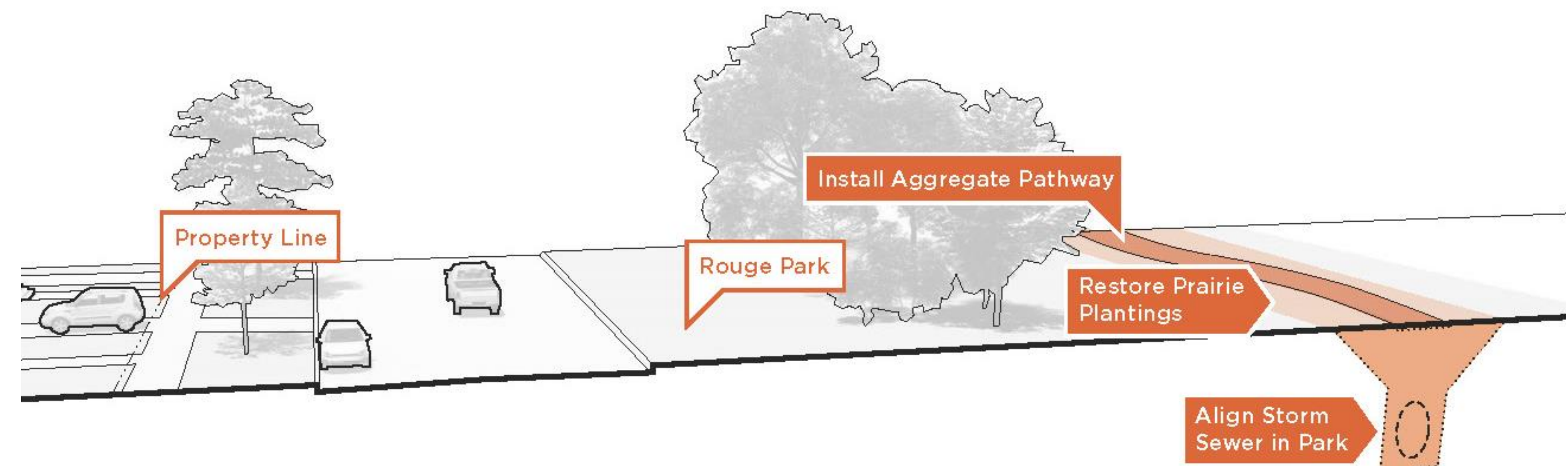
Question:

Which do you prefer, **Option 1 – In Street** or **Option 2- In Park**?

Option 1 – In Street



Option 2 – In Park



Please use the polling feature to answer the question.

Area C: Rouge Park South

Overall Plan



Area C Basin Plan



Infrastructure and opportunities:

Open channel drain

Water Quality

Restoration

Recreation

Rouge Park South - Channels



- Open channel stormwater drain
- Typical flow will be shallow and sometimes dry
- Maximum depth ~5 feet and for short durations

Rouge Park South - Basins



- Pools designed to help filter out dirt collected from streets
- Pools (3 total) will hold up to 2' of water at most times

Planting Palette



Wet / Mesic Seed Mix



Goldenrod



Butterfly Weed



Fox Sedge



Black Eyed Susan



Marsh Blazingstar

Planting Palette



Sand Coreopsis



New England Aster



Hairy Beard Tongue



Little Bluestem



Butterfly Weed

Rouge Park Long-Term Planning

- Passive and Programmed
 - Recreation Area
 - Reforested Upland Forest Nature Area
- Trail Network
 - Upland Forest Loop
 - Parkland Perimeter Path

Based on input from Friends of Rouge Park Master Plan



Long-Term Planning

Concept 1 – No Mounds



- POTENTIAL FUTURE TRAILS
- STORMWATER CHANNEL
- OPEN SPACE
- LIMITS OF IMPACT
- TRAIL CONSTRUCTED AS PART OF DWSD PROJECT
- OPEN SPACE



Long-Term Planning

Concept 2 – Mounds on Parkland



- OPEN SPACE
- POTENTIAL FUTURE TRAILS
- STORMWATER CHANNEL
- EARTHEN MOUND
- LIMITS OF IMPACT
- TRAIL CONSTRUCTED AS PART OF DWSD PROJECT
- OPEN SPACE

Long-Term Planning

Concept 3 – Rolling Terrain



- EARTHEN MOUND
- POTENTIAL FUTURE TRAILS
- STORMWATER CHANNEL
- EARTHEN MOUND
- LIMITS OF IMPACT
- TRAIL CONSTRUCTED AS PART OF DWSD PROJECT
- EARTHEN MOUND





Reference images

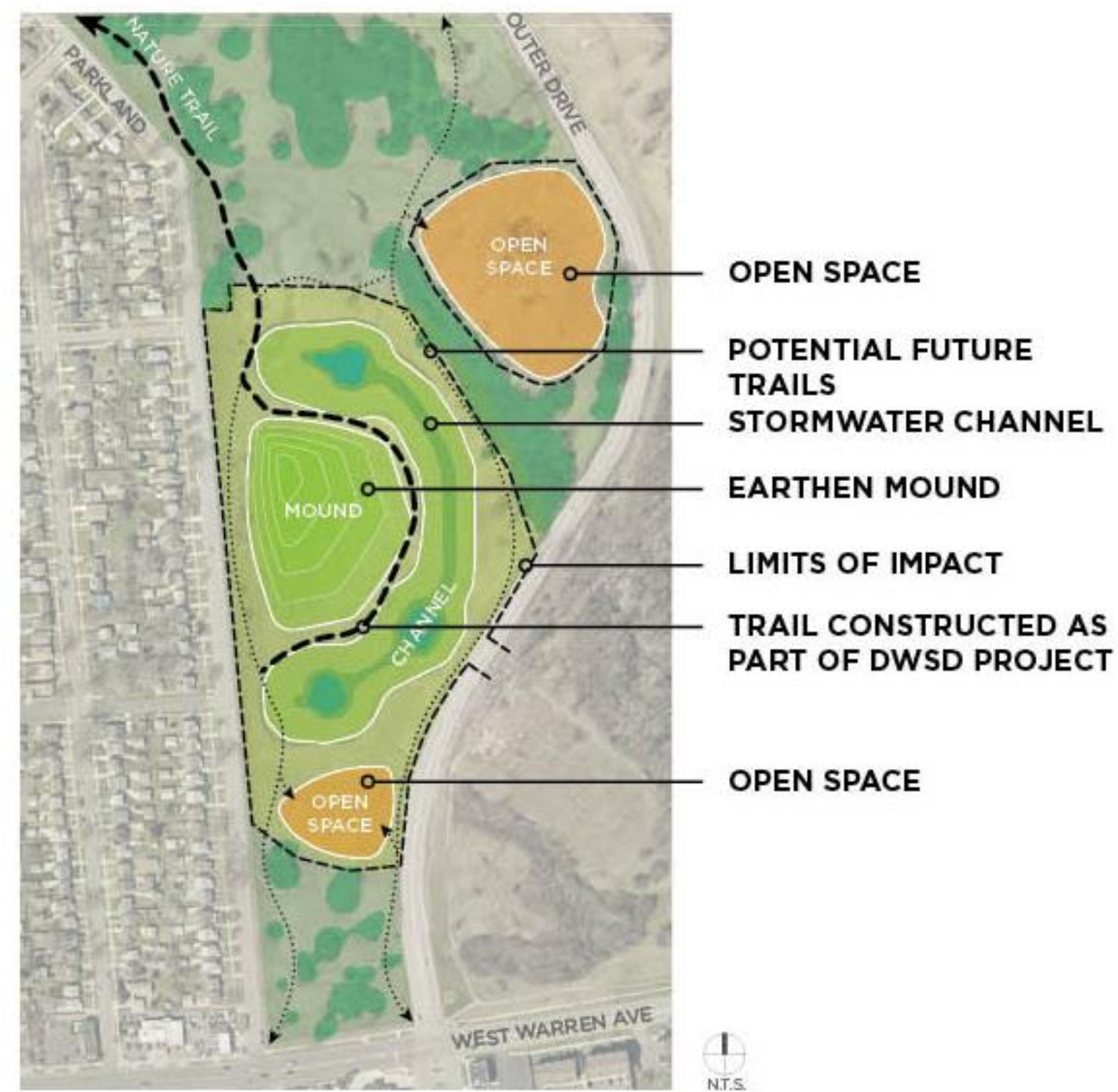
Parkland Options Comparison

Option 1



No Mounds

Option 2



Mound on Parkland

Option 3



Rolling Terrain



Questions?

Do you have any questions
regarding the Parkland Options?

-  Please use the 'raise hand' feature to ask a question.

Question:

Which do you prefer: Option 1, Option 2 or Option 3?

Option 1

No Mounds



Option 2

Parkland Mound



Option 3

Rolling Terrain



Please use the polling feature to answer the question.



Next Steps

- Collect additional responses for neighborhood preferences
 - www.Detroitmi.gov/westwarrenstormwater
- Perform Field Work
 - Existing Sewer Inspections (in Street and rear yard)
 - Residential Downspout Survey
- Finalize Design Work
- Bid and Start Construction in 2021



Question:

Do you have any other questions or thoughts on what was presented today?



Please use the 'raise hand' feature to ask a question.



Water & Sewerage
Department



Water & Sewerage Department



facebook.com/DWSDDetroit



[@DetroitWaterDep](https://twitter.com/DetroitWaterDep)



[@detroitwatersewerage](https://instagram.com/detroitwatersewerage)