

Building 302: Guard House



Front (south) facade, February 2017

Construction Date: 1905

Current Use: Vacant

Historic Use: Service (Guard House)

Square Feet: 4,730 (+2,844 SF basement)

Condition: Fair¹

Prior Cost Estimates: \$709,500²; \$770,000–\$960,000³

Building Typology: n/a

Building Evolution: Openings have been altered; hollow metal doors have been added to replace the original doors, and windows have been blocked over or replaced. The front porch appears to date from

¹ Hamilton Anderson Associates, 2015.

² For rehabilitation; Hamilton Anderson Associates, 2015.

³ For rehabilitation and conversion to visitors center use; SmithGroup, 2008.

around 1939. Fascia details may have been simplified from their original configuration.

Interior Description: The building is composed of a one story portion at the south that has a full basement and a one story wing to the north, at grade with no basement. Two main entrances to the building enter the south portion under a full width front porch. One leads to an office, restroom and stair to the basement. The other is a double door entrance to the large room that fills out the remainder of the south section of the building. At the rear of this room a door leads down several steps to the other large room that fills the entire north wing.

General Condition: This building is in fair condition, according to a 2015 report. A condition assessment conducted in 2008 identifies foundations in good condition, masonry in fair condition with some mortar deterioration and deteriorated chimney mortar, damaged wood trim, missing gutters and leaders, paint in poor condition, and a roof in new condition (replaced in 2004). The building has suffered additional deterioration since 2008.

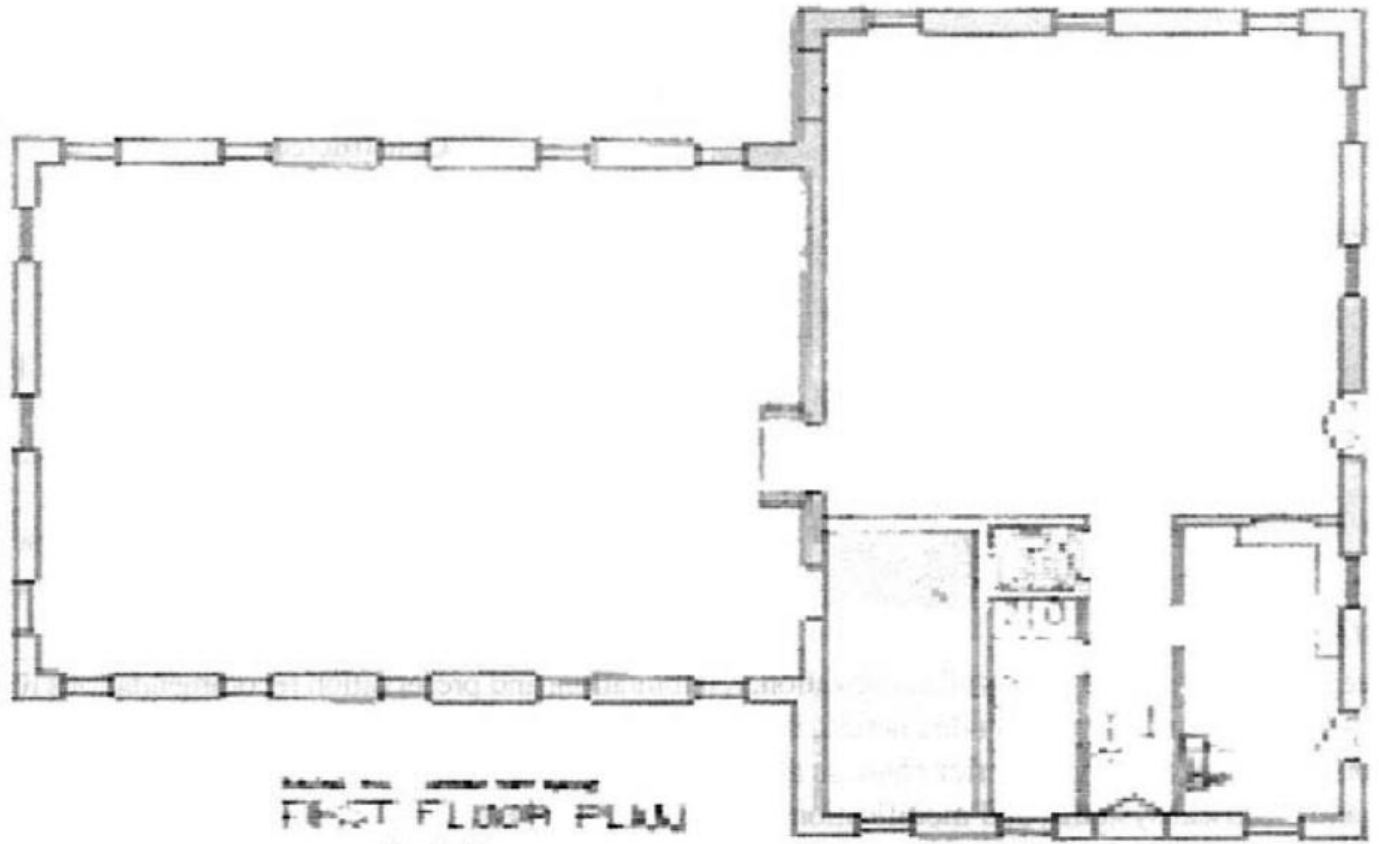
Utilities: Gas; boiler may be functional but has been shut off.

Character-defining Features: Significant exterior features include: Coursed ashlar limestone base, overall T-plan hip roofs on both masses, Shingle-style hip-roof front dormer, window openings formed by shallow rowlock arches at the front building mass, and Roman arches at the rear mass, all with limestone sills (windows have a variety of muntin configurations), brick chimney, two large round metal sheet metal ventilators with star ornaments, red tinted mortar.

There are no significant interior features other than a brass ceiling light fixture at the center of each of the two large rooms.

References: Additional background information, including both 2008 and 2015 conditions assessments referenced above, and National Register of Historic Places documentation, is available at detroitmi.gov/historicfortwayne.

See next page for floor plan.



ARCHITECTURAL FLOOR PLAN
FIRST FLOOR PLAN
K-1-0