

## Building 109: Officer's Club

---



*Front (south) facade, April 2019*

**Construction Date:** 1890

**Current Use:** Event Space

**Historic Use:** Assembly (Officer's Club); Residential (Officer's Quarters)

**Square Feet:** 4,837 (+2,053 SF basement)

**Condition:** Fair<sup>1</sup>

**Prior Cost Estimates:** \$974,600<sup>2</sup>; \$640,000–\$790,000<sup>3</sup>

**Building Typology:** “Type 6”, with 110<sup>4</sup>

**Building Evolution:** This building, originally a single-family residence, was originally a wood frame building on a brick foundation. It was

---

<sup>1</sup> Hamilton Anderson Associates, 2015.

<sup>2</sup> For rehabilitation; Hamilton Anderson Associates, 2015.

<sup>3</sup> For rehabilitation and conversion to office use; SmithGroup, 2008.

<sup>4</sup> Nomenclature by SmithGroup, 2008.

re-clad with brick veneer between 1937 and 1939, resulting in a side-gabled Colonial style exterior. When constructed, it was identical to Building 110, the Commanding Officer's House that has since been restored. This building was extensively remodeled by the Works Progress Administration during the years 1937–1939; the red brick veneer, interior and exterior woodwork and architectural details, and restroom fixtures are historically significant alterations dating from this period. It was also converted, at a later date, to serve Fort Wayne as an officer's club. An addition to the northeast was added at an unknown date.

**Interior Description:** This structure, originally built as a one-family Officer's housing facility, is two stories with full basement. Today the first floor consists of an entrance vestibule and front stair hall leading to a very long room on the east (originally a double parlor with the separating wall removed). On the west are two rooms. These spaces served the club for dining and entertainment. To the rear of the first floor are a pantry and kitchen with a rear stair to the basement and the second floor between. Also an addition was constructed at the northeast corner to add several medium sized rooms, two half baths (one with a shower), several closets and a rear entry hall. The second floor contains a major stair hall, five bedrooms, three full baths, and closets. The two main floor levels have fully plastered walls and ceilings. Remnants of a coved plaster cornice, predating the 1935-39 alterations, remain in several first floor rooms. Primary floors are wood. The entrance vestibule has a quarry tile and ceramic tile wainscot (circa 1935-39). The bathrooms have ceramic tile floor and wainscot (circa 1935-39). The basement is subdivided into several rooms and an access hall. Major basement walls are masonry and ceilings are plastered throughout.

**General Condition:** This building is in fair condition, according to a 2015 report. Some repairs have been made in recent years.

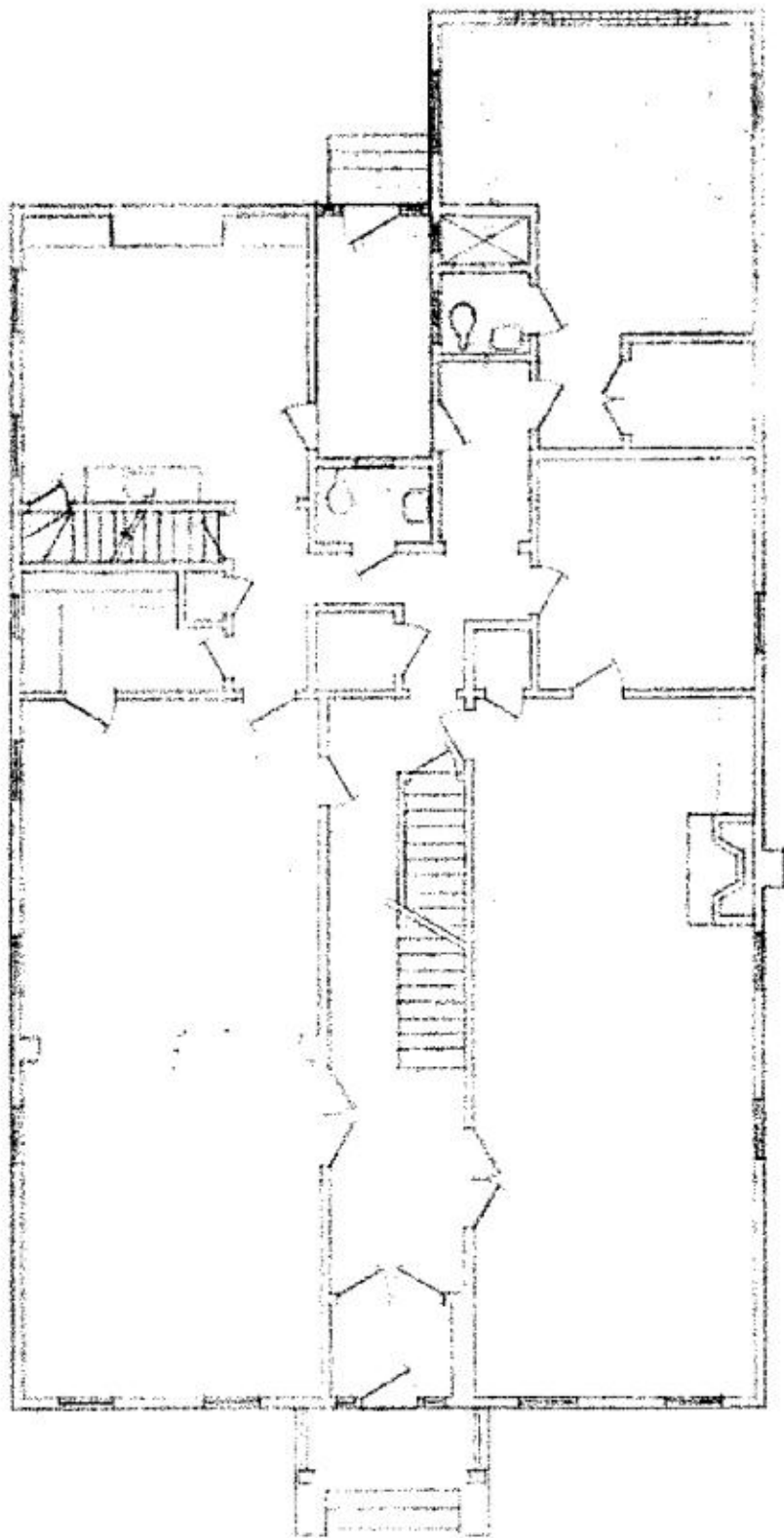
**Utilities:** Electricity, gas, heat (working boiler), water

**Character-defining features:** Significant exterior features include: red brick veneer, side-gabled exterior with a subordinate off-center perpendicular gable at the east side, Rectangular window openings with steel lintels, brick masonry chimney, eaves with crown molding trim, double-hung wood windows, typically six-over-six with some four-over-four, front porch on the south elevation with a brick masonry base parged with a cementitious coating. Colonial Revival details including two wood columns and a front-gabled pediment roof.

On the interior, all woodwork and interior doors, with colorful tile work in entrance vestibules and restrooms, and restroom fixtures are significant features introduced by the WPA. Fireplaces and surrounds are also significant. Wood and metal stairway rails are a recent fabrication and not a significant feature. Hanging schoolhouse-style light fixtures on the lower level were taken from Building 207, where they had been added in the 1970s, and are not character-defining features to either building.

**References:** Additional background information, including both 2003 and 2008 conditions assessments referenced above, and National Register of Historic Places documentation, is available at [detroitmi.gov/historicfortwayne](http://detroitmi.gov/historicfortwayne).

*See next page for floor plan.*



FIRST FLOOR PLAN  
OFFICERS' CLUB BLDG. NO. 109  
MAY 20, 1950  
J. G. HARRIS ARCHT.

ARCHITECTURAL DRAWING