

Focused Workshop

TRAVELING



Greater Corktown Neighborhood Framework Plan

October 9, 5:30-7:30pm

@ IBEW Hall



GOAL OF THE WORKSHOP

Develop creative strategies around how to improve street design, safe intersections, parking & Michigan Avenue



Greater Corktown
Neighborhood
Framework Plan

MDOT Michigan
Ave Study

Today's Workshop

5:30PM Workshop Goals

6:00PM Rotating design exercises (20 mins each)

A. Street Design

B. Intersections

C. Parking

D. Michigan Ave

7:00PM Report-outs

7:20PM Next Steps

Looking back: Detroit in 1949

Michigan Ave

Michigan
Central Train Depot

Study Area



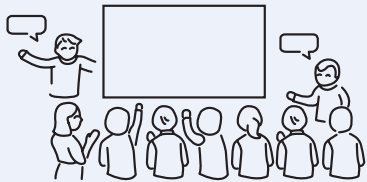
Community planning & input

SUMMER 2018

SUMMER 2019 - SPRING 2020

FALL 2019 -
SPRING 2020

THE FORD CBO



\$2.5M

Affordable Housing
Leveraging Fund

\$2.5M

Strategic
Neighborhood
Core City Fund

\$5M

for workforce training,
education,
& development

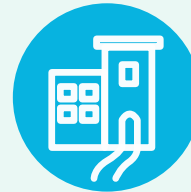
CITY OF DETROIT GREATER CORKTOWN PLANNING PROCESS



GREENING



TRAVELING

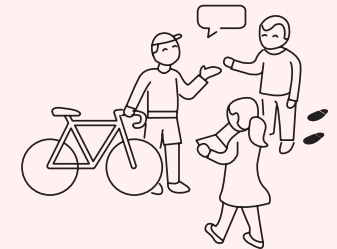


BUILDING

**FORD
PROJECT
PLANNING**

**CITY ONE
MOBILITY
CHALLENGE**

MDOT P.E.L. STUDY



**Kick-Off:
October 9/10th**

Recommendations
to guide
infrastructure
improvements along
Michigan Ave

Alternatives &
recommendations
will be developed
in Spring 2020

Framework purpose

create a short and long-term plan that promotes inclusive growth of Detroit's oldest established neighborhood, while preserving unique character, cultural heritage & integrity.

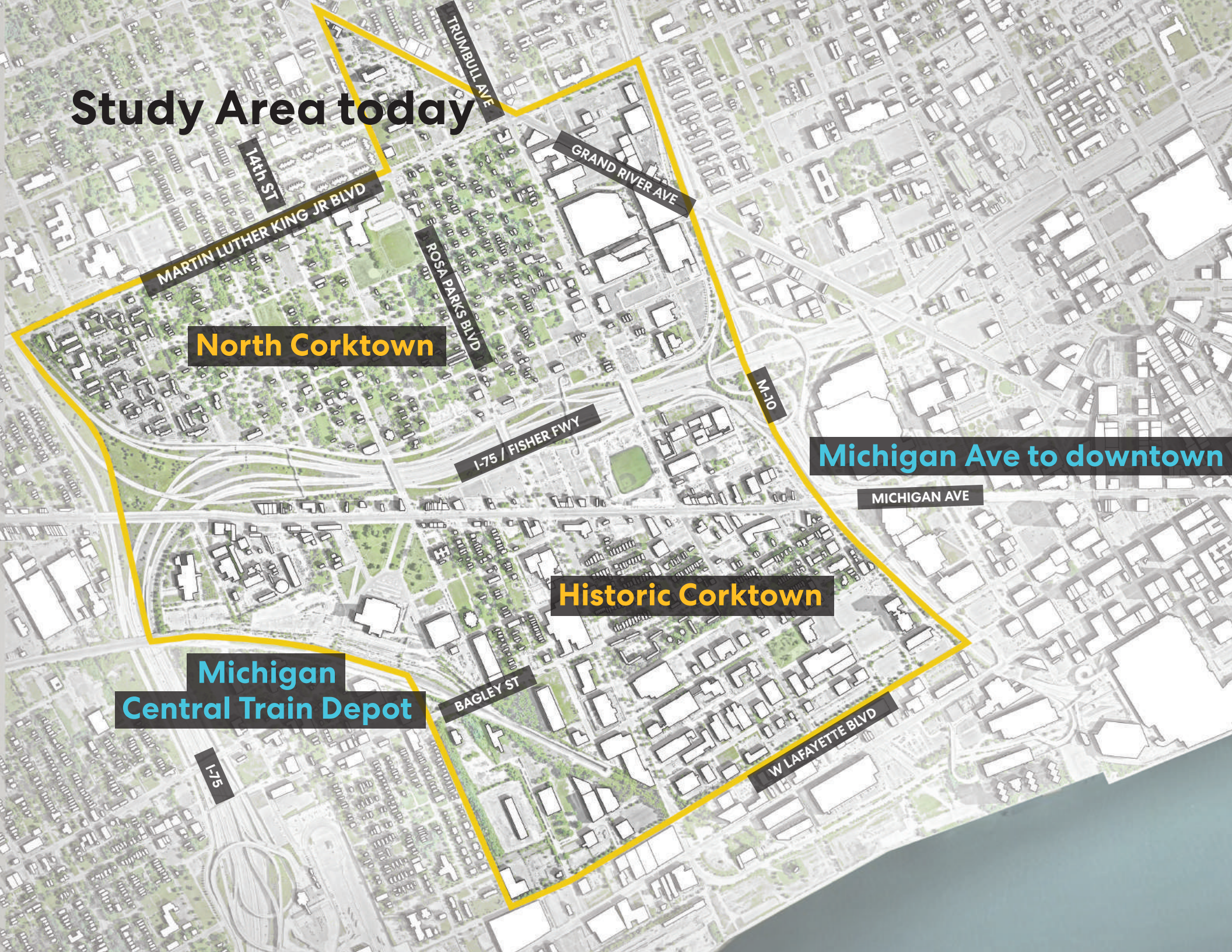
Study Area today

North Corktown

Historic Corktown

Michigan Central Train Depot

Michigan Ave to downtown



14th ST
MARTIN LUTHER KING JR BLVD

ROSA PARKS BLVD

I-75 / FISHER FWY

M-10

MICHIGAN AVE

BAGLEY ST

W LAFAYETTE BLVD

I-75

Framework Plan process

SUMMER 2019

FALL 2019

SPRING 2020

Phase 1:
Existing Conditions Research & Market Analysis



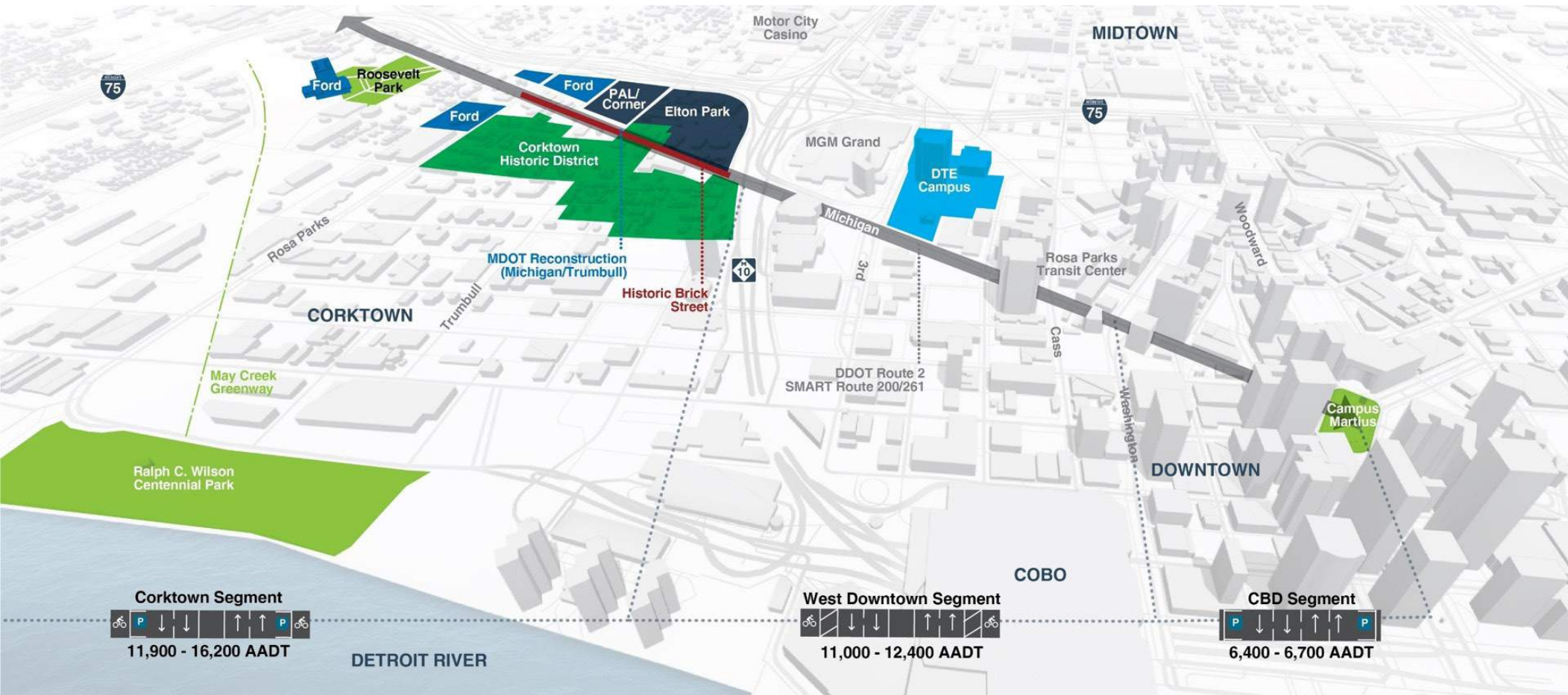
Phase 2:
Neighborhood Framework Plan

Why a Planning & Environmental Linkages (PEL) for Michigan Ave?

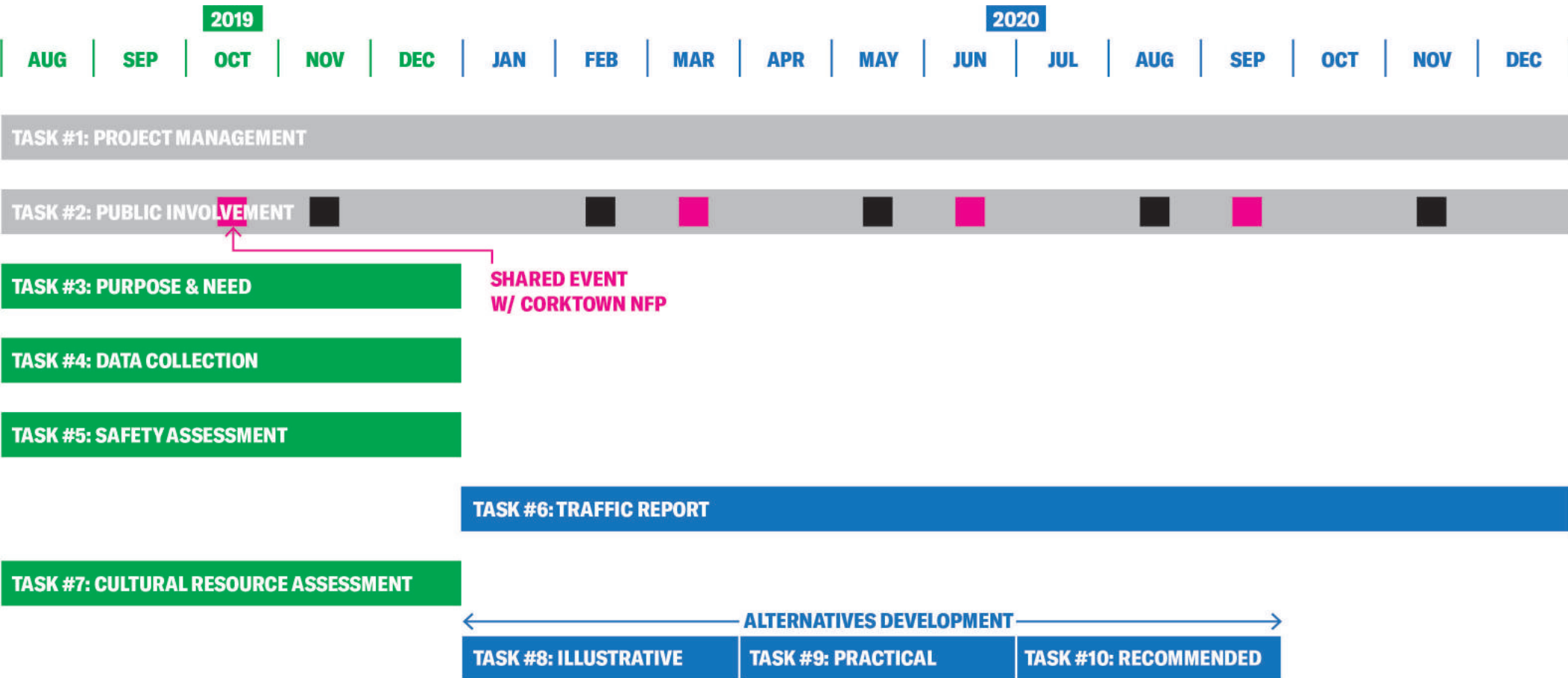
- 1** Consider environmental, community, and economic goals early in the transportation planning process
- 2** Consider the infrastructure, geometric/safety needs, and operational needs of all modes of transportation
- 3** Consider strategies that have been developed and evaluated through a data-driven approach, that will inform the environmental review process



Planning & Environmental Linkages (PEL) Michigan Ave Study Area



Planning & Environmental Linkages (PEL) Michigan Ave **Schedule**



Planning & Environmental Linkages (PEL) Michigan Ave

Next Steps (2019)

- Finalize sequence of community and committee meetings
- Aggregate community feedback and begin development of P&N, goals, objectives, and performance measures
- Continue data collection to support alternatives development
- Continue assessment of traffic, safety, and cultural resources

Next Steps (2020)

- Begin alternatives development

With your input today, we will develop...

FRAMEWORK

**Street
improvement strategies**

**Tactical intersection
improvements**

Parking strategies

PEL MICHIGAN AVE

The study's P&N statement

**The P&N statement will
support to the development
of goals, objectives, and
performance measures**

**The alternatives for Michigan
Avenue developed as part of this
study will be evaluated using these
performance measures**



Building on existing community efforts

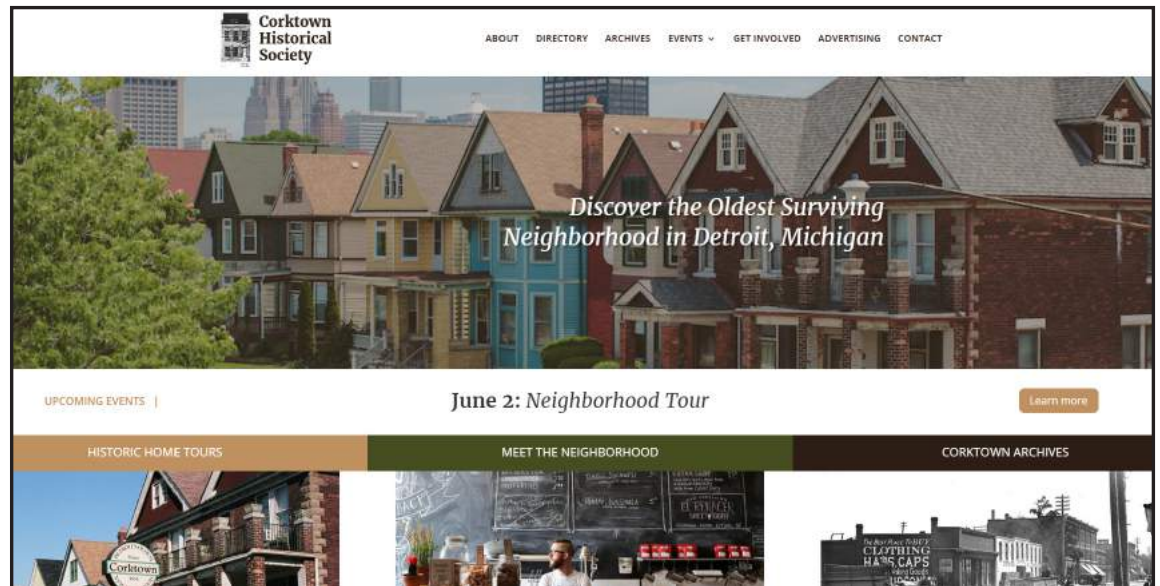


CBO process & Neighborhood Advisory Council



Corktown Business Association

Corktown Historical Society



Corktown Business Association Pop-Up meeting (July)



Historical Society Pop-Up meeting (September)



Community Pop-Up meeting (last week)



Community Pop-Up meeting (last week)



What we've heard

Strong desire to be connected to the riverfront

Future Joe Louis Greenway connection



NORTH TO MICHIGAN
AVE & CORKTOWN

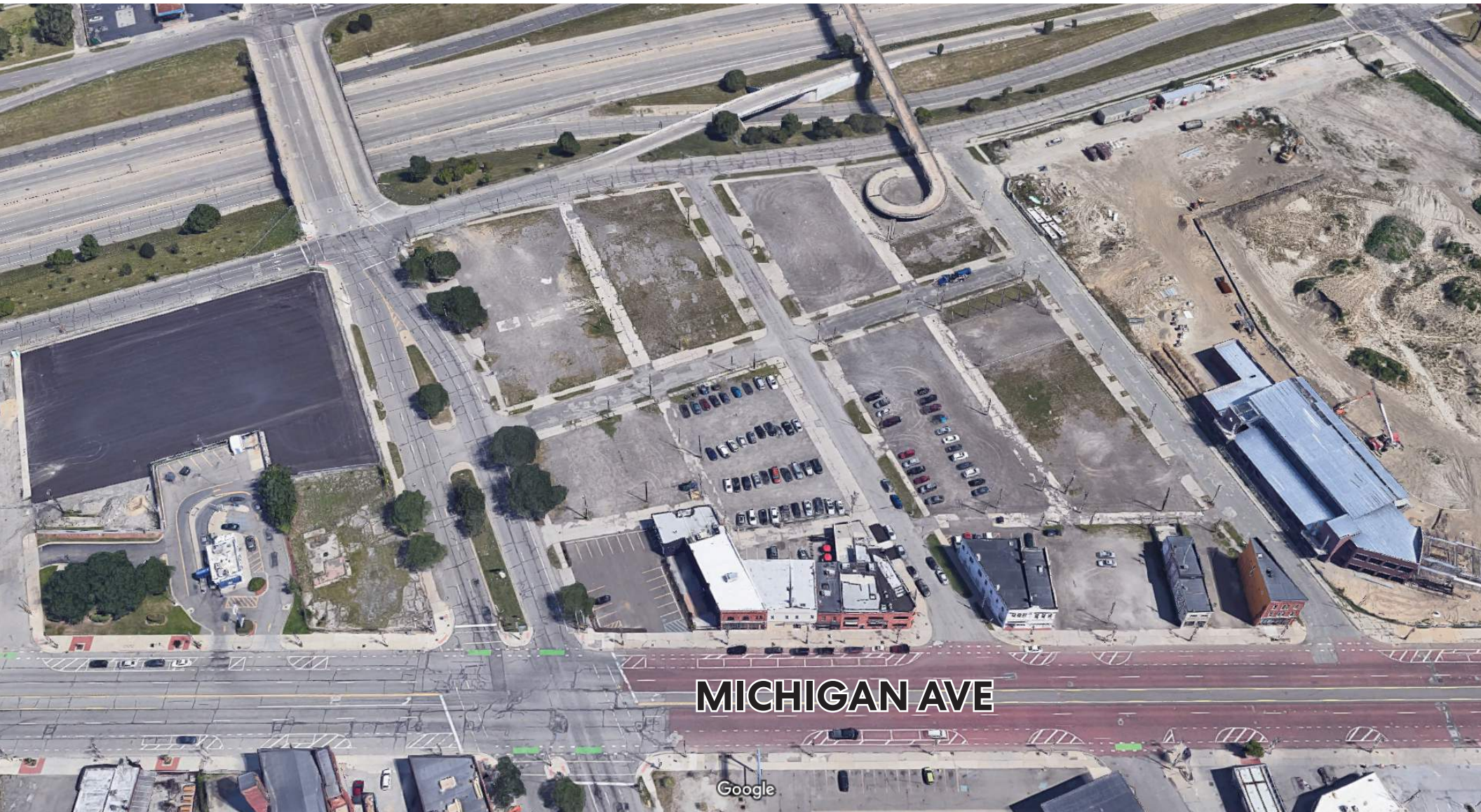
ROSA PARKS BLVD

SOUTH TO RIVERFRONT
& WILSON
CENTENNIAL PARK

W LAFAYETTE BLVD

What we've heard

The importance of parking availability and access



MICHIGAN AVE

What we've researched

Making the best use of all parking resources

DAYTIME



What we've researched

Making the best use of all parking resources

NIGHT



What we've heard

Pedestrian safety in residential areas



What we've heard

Pedestrian experience at crossings & along Michigan Ave



Looking towards downtown



Rush hour (~8:45am)

1920s

What we've researched



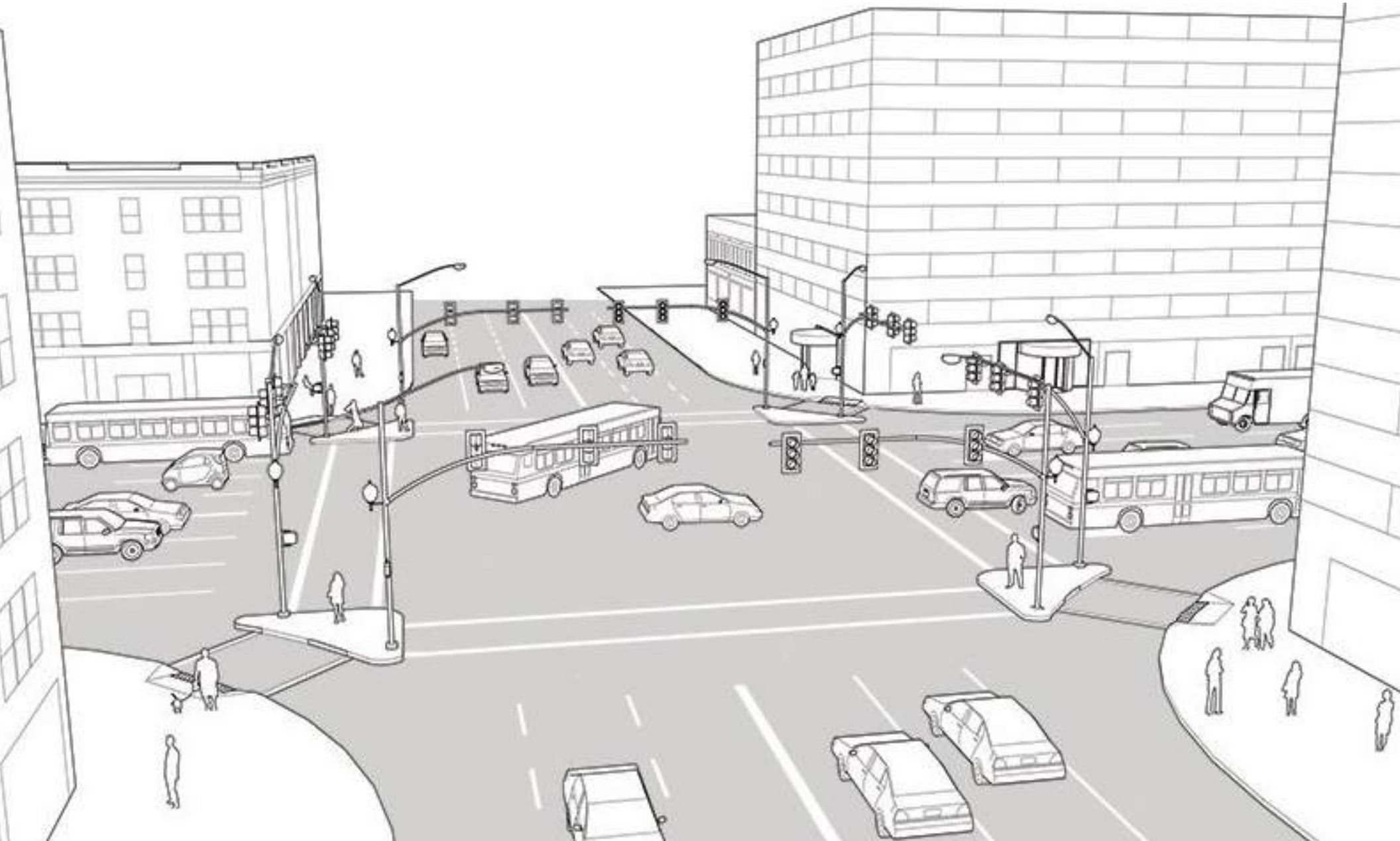
Corner of 8th Street and Michigan Avenue, looking west

(Wayne State University)

BEFORE

What we've researched

Street amenities & tactical improvements



What we've researched

Street amenities & tactical improvements



What we've researched

PAINTED CROSSWALKS

UNPAINTED

Opportunities to add crosswalk markings

0 375 750 1125 1500 ft



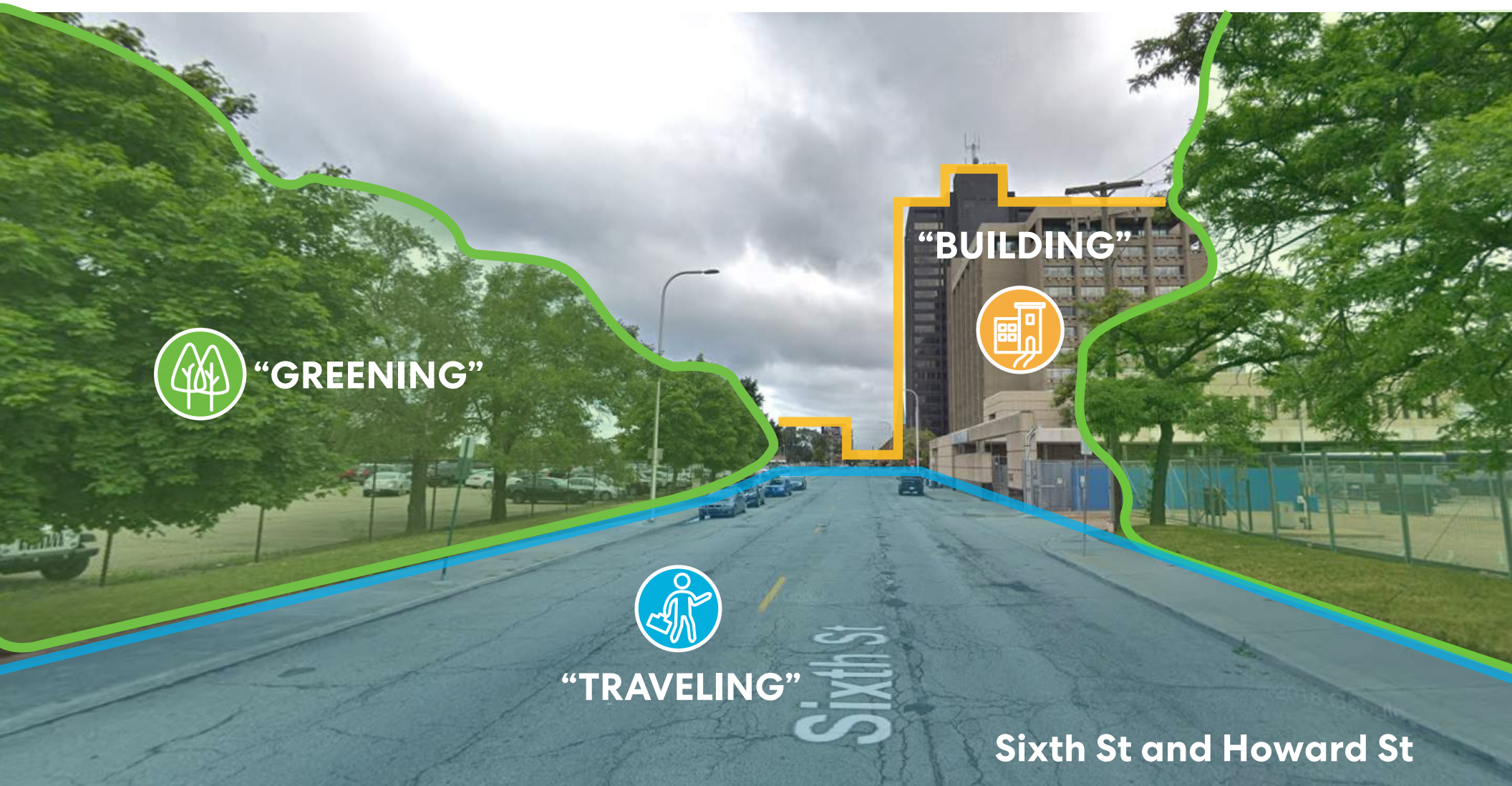
“TRAVELING”

Thinking about the future: TRAVELING

2019



2030?



Sixth St and Howard St

“TRAVELING” DESIGN EXERCISES



**Street
Design**



Intersections



Parking



**Michigan
Ave**



Street Design



**How can Trumbull & Rosa Parks Blvd
work as safe N/S community streets
to the waterfront?**



Intersections



What low-cost, high-impact design strategies can be used to make people feel safer?



Parking



How can on-street parking & parking lots be used strategically & creatively for the neighborhood?



Michigan Ave



What is the future of Michigan Ave?

Next steps in the process

SUMMER 2019

FALL 2019

SPRING 2020

Phase 1:
Existing Conditions Research & Market Analysis



Phase 2:
Neighborhood Framework Plan

Visit the City website:

www.detroitmi.gov/greatercorktown

Sign-up for the newsletter!

