



LET'S  
**DREAM**  
TOGETHER



# JOE LOUIS GREENWAY

---

Community  
Visioning Session

June 18, 2019



LET'S  
**DREAM**  
TOGETHER



## **AGENDA**

---

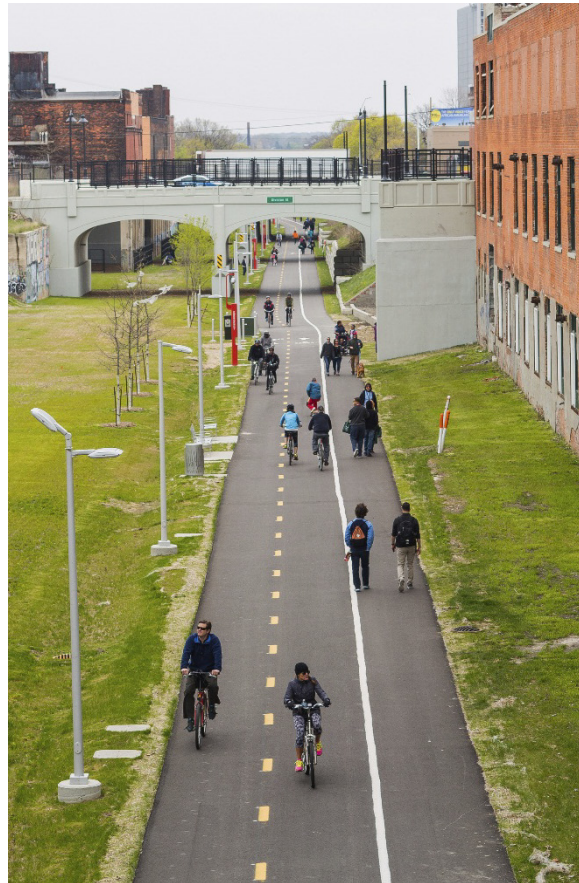
- 6:00-6:05p** Refreshments
- 6:05-6:25p** Introduction & Project Overview
- 6:25-6:30p** Activity Review
- 6:30-7:45p** Activities and Discussion
  - Goals
  - Priorities
  - Mapping
- 7:45-8:00p** Next Steps



# INTRODUCTION

# PROJECT TEAM

## INTRODUCTION



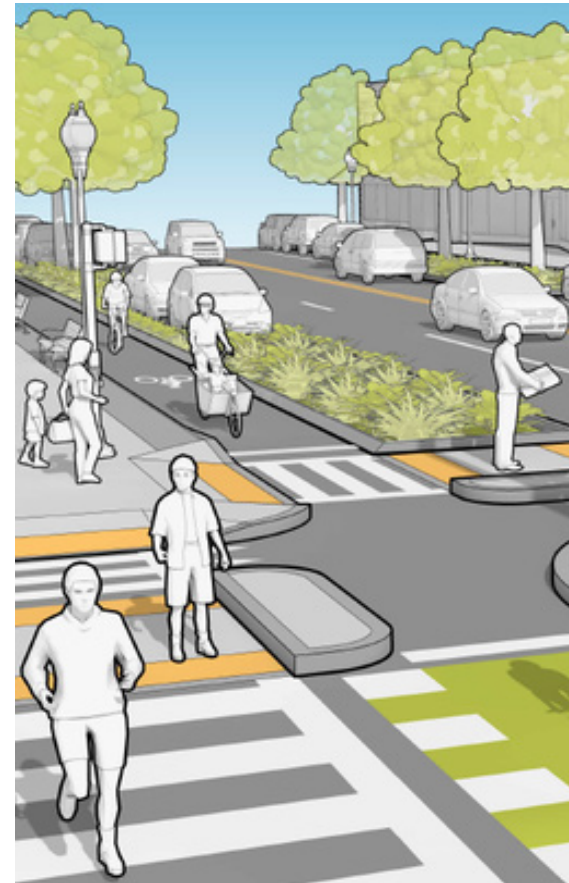
### SMITHGROUP

Project Lead



### HR&A

Economic  
Development



### TOOLE DESIGN

Non-motorized  
Design



### SIDEWALK DETROIT

Public Engagement



### STUDIO INCOGNITA

Identity & Branding

# MEET YOUR CITIZEN ADVISORY COUNCIL

**Kathy Angerer**  
Hamtramck

**Ru Shann Long**  
District 6

**Rochelle Lento**  
District 2

**Willie Faison**  
Highland Park

**Korey Batey**  
District 7

**Victoria Griffin**  
District 3

**Ashia Phillips**  
District 5



Not Pictured  
**Jeffrey Polkowski**  
Dearborn



# FRAMEWORK PROCESS

PHOTO CREDIT: JAMES BROWN

# JOE LOUIS GREENWAY FRAMEWORK PLAN

## FRAMEWORK DELIVERABLES

Engagement

Phasing

Alignment

Standards

Programming

Maintenance

Arts and Culture

Economic Development



PHOTO CREDIT: JAMES BROWN



# FRAMEWORK SCHEDULE

FEB    MAR    APR    MAY    JUN    JUL    AUG    SEP    OCT    NOV    DEC    JAN

 PROJECT START-UP

EXISTING CONDITIONS

COMMUNITY ENGAGEMENT

DRAFT FRAMEWORK

FINAL FRAMEWORK

FINAL PROJECT DELIVERY 

COMMUNITY  
ENGAGEMENT SERIES 1





# EARLY COMMUNITY ENGAGEMENT



# ATLANTA BELTLINE LEARNING EXCHANGE



## PRESENTATIONS & DISCUSSIONS



# SMALL WORKING GROUP



# WHAT IS THE JOE LOUIS GREENWAY?

IT'S MORE THAN  
"JUST A PATH"

Bring your  
**VOICE**  
THIS WILL IMPACT  
GENERATIONS



IT'S AN  
**ECONOMIC  
DRIVER**

Connecting  
Communities

IT'S ABOUT MORE  
THAN THE **GREENWAY**

Family  
Friendly

open  
spaces

THE HEART OF THE  
COMMUNITIES

ACCESSIBLE  
to all ages

celebrate art



THIS IS  
DETROIT'S  
**FUTURE**

BRIDGING

WERE

SEPARATIONS

CONSIDERATIONS: 1 where people live 2 Diverse Communities

Who Drives 4 unemployment 5 Employment centers





# WHAT IS A GREENWAY?





**WHAT  
DOES A  
GREENWAY  
MEAN FOR  
YOU?**



# FAMILY FRIENDLY



PHOTO CREDIT: JAMES BROWN



CONNER CREEK GREENWAY



CONNER CREEK GREENWAY



# HISTORY, CULTURE, IDENTITY



Canadian Dick Gregory (left), John Lewis (center) and other SNCC members are ordered to leave Left's when a segregated restaurant located across from the States Theater. Gregory gives a look of contempt to the owner as the protesters exit the restaurant. To prevent others from entering the restaurant, the protesters lay down in the street's intersection, which resulted in their arrest. (Associated Press.)





# ECONOMIC DEVELOPMENT



INDIANAPOLIS CULTURAL TRAIL



# EXISTING CONDITIONS



PHOTO CREDIT: A FINE MESS





# AREA OF IMPACT

## JOE LOUIS GREENWAY



# SECTIONS

## EXISTING CONDITIONS





# EMPLOYMENT CENTERS

## EXISTING CONDITIONS



**97,000**  
TOTAL EMPLOYEES<sup>1</sup>

**4,500**  
TOTAL BUSINESSES<sup>1</sup>

<sup>1</sup>2018 American  
Community Survey



### EMPLOYMENT AREAS

● Place of Employment

# SAFETY IN MOBILITY

## 2<sup>ND</sup> HIGHEST

BIKE FATALITY RATES IN THE COUNTRY IN 2017<sup>1</sup>

## 5<sup>TH</sup> HIGHEST

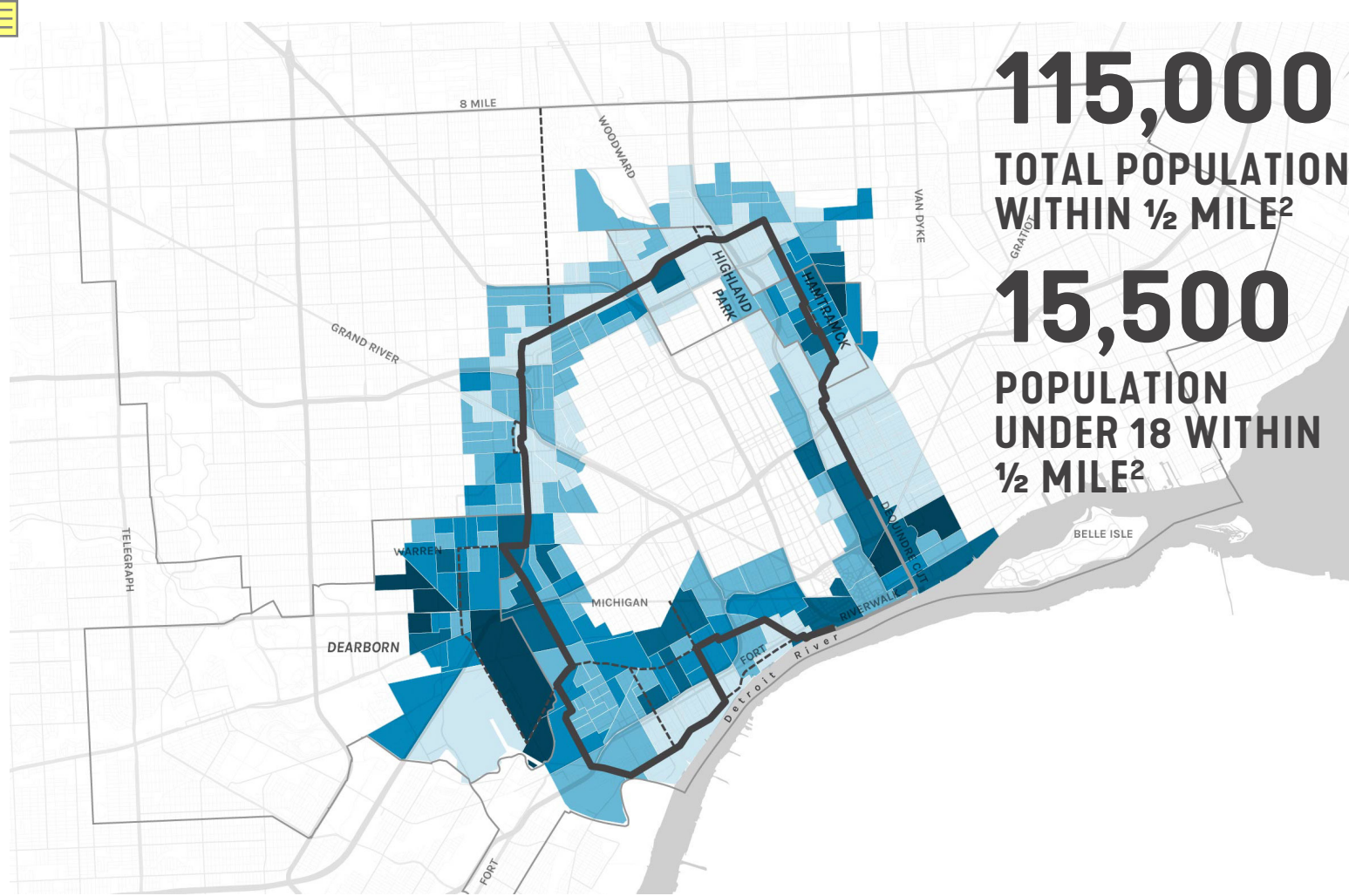
PEDESTRIAN FATALITY RATES IN THE COUNTRY IN 2017<sup>2</sup>



<sup>1</sup>(4.16) in cities over 100,000 population. Data according to the 2017 NNTSA Pedestrian Report.

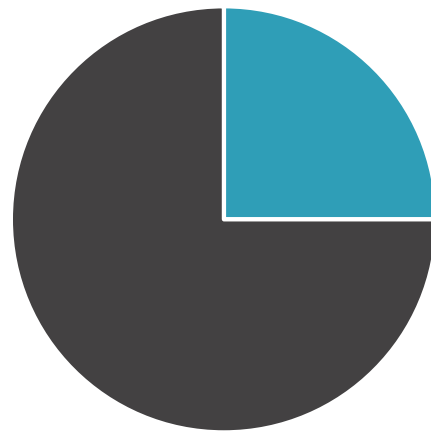
<sup>2</sup>(4.16) in cities over 100,000 according to the 2017 NHTSA Pedestrian Report.





**HOUSING**  
**43,000**

HOUSEHOLDS WITHIN 1/2  
MILE<sup>2</sup>



**25%**  
OF DETROITERS  
HAVE NO ACCESS  
TO A VEHICLE<sup>1</sup>



**15,611**  
HOUSEHOLDS WITH  
DISABILITIES WITHIN  
1/2 MILE<sup>2</sup>

**HOW WE GET TO WORK<sup>2</sup>**



7.0%  
Public  
Transportation



16.6%  
Carpool



65.5%  
Drove Alone



4.5%  
Walk



0.6%  
Bicycle

<sup>1</sup>2010 US Census Data

<sup>2</sup>2018 American Community Survey



# WORKSHOP ACTIVITIES



## STATION 1: COMMENT GOALS BOARD

Help us to develop goals for the greenway – and see what others are saying!



## STATION 2: VOTE PRIORITIES

Identify your top priorities for the greenway by voting for what you think is most important.



## STATION 3: DRAW MAPPING

Use sticky notes and markers to show us where assets & opportunities are in your community.

**TIP:** Maps of each segment are posted around the room – use the large area map to find your area of interest



# QUESTIONS AND NEXT STEPS



## QUESTIONS & COMMENTS

Leave additional questions and comments in the comment box

Email questions, comments, or [joelouisgreenway@detroitmi.gov](mailto:joelouisgreenway@detroitmi.gov)

## STAY INVOLVED

Follow the website:

[joelouisgreenway.com](http://joelouisgreenway.com)

Watch for the next community meeting series in August

## HELP US SPREAD THE WORD

Bring a friend to a future meeting

Invite staff to speak with your local block club or organization:

[joelouisgreenway@detroitmi.gov](mailto:joelouisgreenway@detroitmi.gov)



LET'S  
**DREAM**  
TOGETHER

WHAT'S YOUR  
VISION FOR THE  
JOE LOUIS GREENWAY?

## PLEASE JOIN US FOR ONE OF OUR VISIONING SESSIONS:

*Enjoy refreshments, meet the design team and provide feedback!*

**Tue. June 18**

6-8 pm

Adams Butzel Rec. Complex  
10500 Lyndon St, Detroit

**Sat. June 22**

11 am-1 pm

Lasky Recreation Center  
13200 Fenelon St, Detroit

**Thur. June 20**

6-8 pm

Patton Community Center  
2301 Woodmere St, Detroit

**Mon. June 24**

2-4 pm

Tindal Recreation Center  
10301 W Seven Mile, Detroit

### QUESTIONS OR COMMENTS

**CHRISTINA PELTIER**

City of Detroit GSD

313-628-4318

[joelouisgreenway@detroitmi.gov](mailto:joelouisgreenway@detroitmi.gov)

