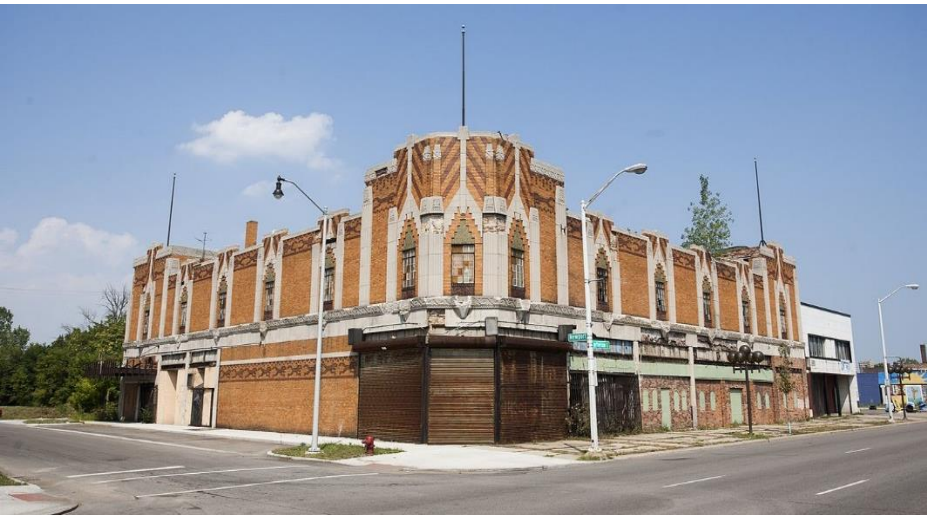




# EAST JEFFERSON CORRIDOR IMPROVEMENTS

March 21, 2019





# JEFFERSON CHALMERS

NEIGHBORHOOD  
FRAMEWORK  
PLAN

A plan of action, co-crafted by residents and the City, to guide future growth and investment in the neighborhood

## COMMUNITY MEETING #4

FEBRUARY 16, 2019  
SALVATION ARMY  
3000 CONNER ST



# FINAL RECOMMENDATIONS





# WE HEAR YOU!

*"Getting on to Jefferson from the side streets unless you go to a light is a challenge"*

*"Keeping pedestrians safe while crossing the street is Jefferson's greatest challenge"*

*"Jefferson needs better transit"*

## Non-transit riders\* also told us:

**40%** Bus takes too long/ isn't convenient

**31%** Prefer to drive

**26%** Bus does not run close to me/my destination

\*Share of non-DDOT riders citing each barrier. Source: DDOT survey



# DESIGNING A STREET FOR ALL

## NEIGHBORHOOD

People + Places



## JOBS

Workers +  
Commuting  
Patterns



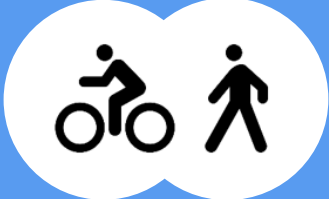
## TRANSIT

Bus Riders



## ACCESS

Pedestrians +  
Cyclists







## People + Places



**1,160**

Senior population

**1,860**

Youth population

**~7,000**

Total population





## People + Places



**470**

affordable housing  
units

**50**

multifamily units  
built since 2016

**140**

multifamily units in  
the pipeline

**1,450**

households





# Workers + Commuting Patterns



**950**

daytime workers

**14%**

of commuters get to work by walk, bicycling, or taking public transit

**15-20min**

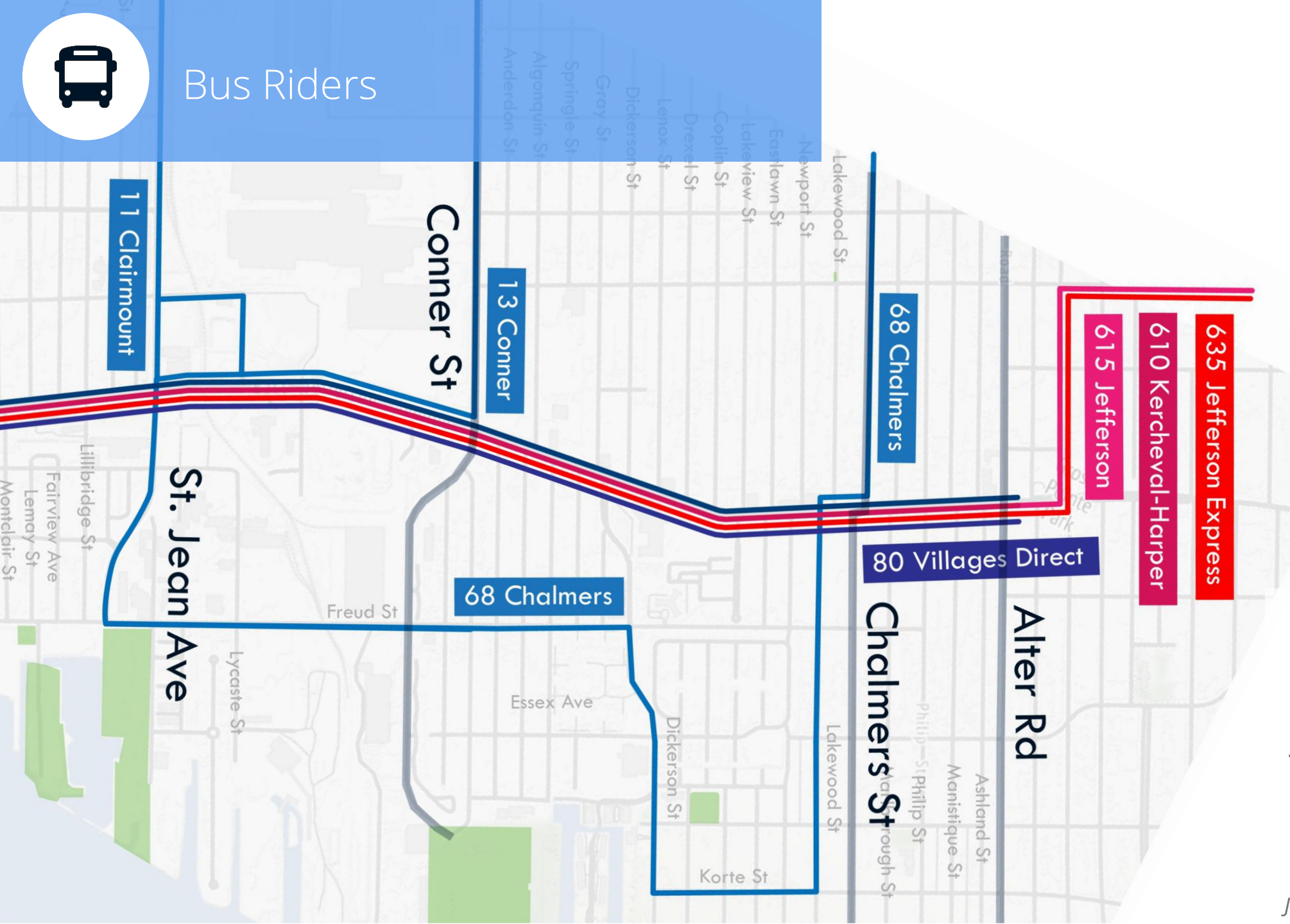
average travel times in minutes between I-75 and Alter







# Bus Riders



# 30%

of households don't have access to a car

# 10

DDOT Bus stops

# 5

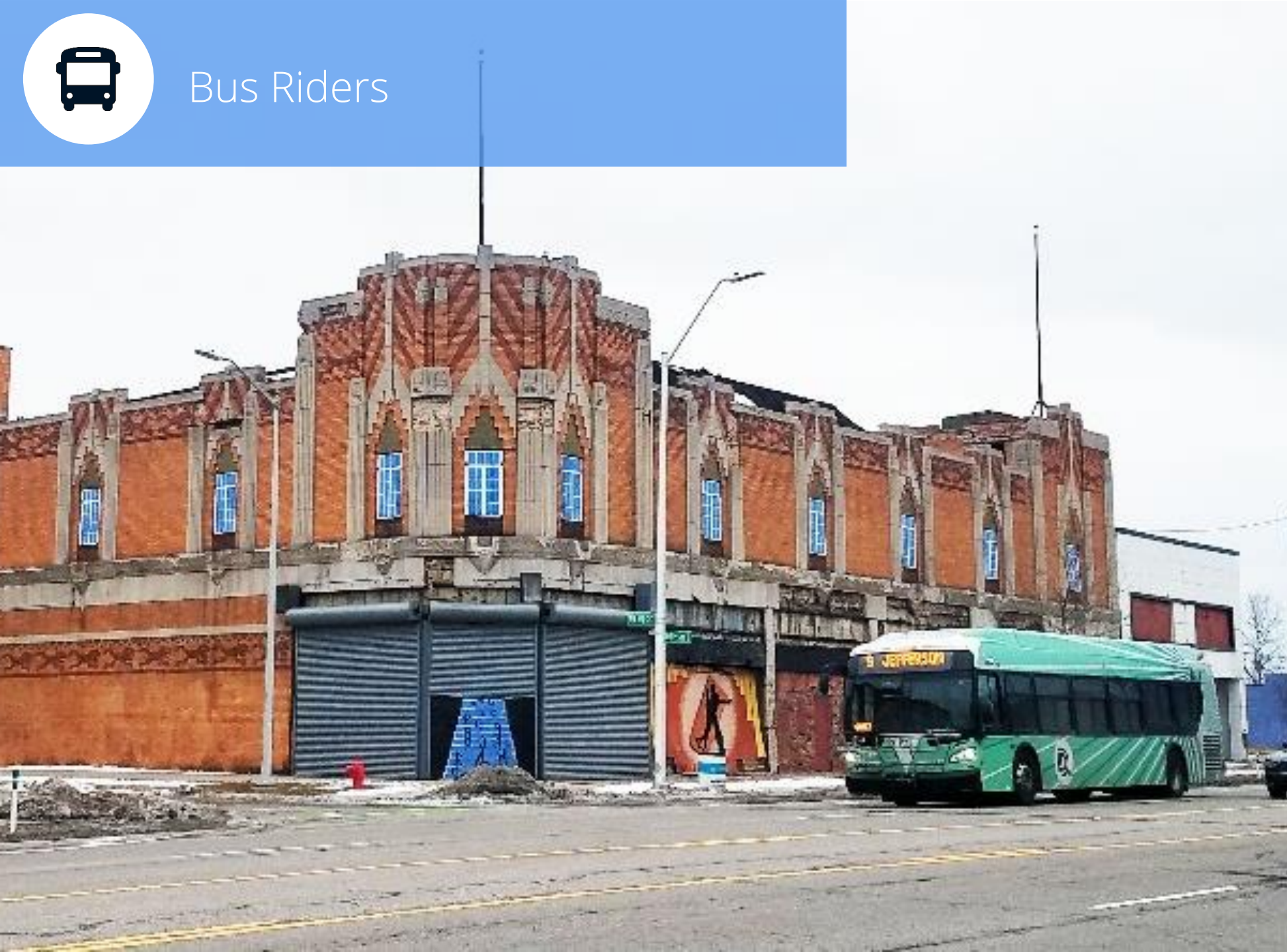
Bus lines  
Jefferson at Chalmers  
DDOT + SMART

*Jefferson Chalmers ¼ mile walkshed*





## Bus Riders



# 121

Daily ONs (boardings)  
All DDOT

# 144

Daily OFFs (alightings)  
All DDOT

---

# 1,438

Daily ONs (boardings)  
DDOT #9

# 1,413

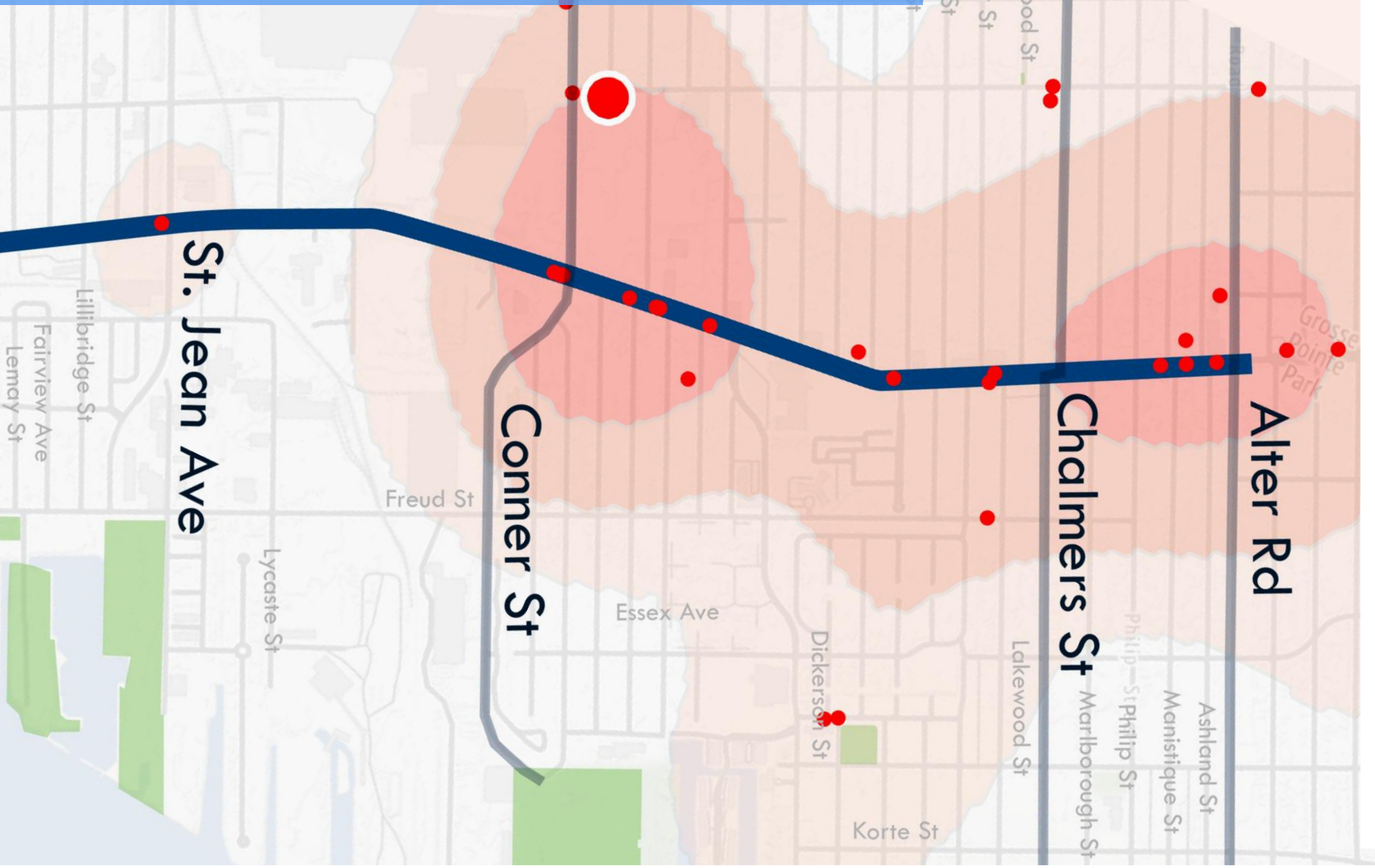
Daily OFFs (alightings)  
DDOT #9

*East Jefferson Corridor totals*





# Pedestrians + Cyclists



# 1,975

crashes on Jefferson between 2012 and 2017 (between Alter and Woodward)

# 23

Pedestrian and bicycle crashes in Jefferson Chalmers

## LEGEND

- Pedestrian & Bicycle Crashes
- Fatalities





## Pedestrians + Cyclists



# 373

Daily average  
number of  
people biking  
on Jefferson



# CONCERNS FOR FURTHER STUDY

Since the installation of the bike lanes on East Jefferson last year, you've shared your concerns. You told us:

*"No one will bike."*

- Counts were collected determining that **373 cyclists used the bike lane on a typical weekday** in July 2018
- As a part of this study, **we will conduct additional counts** this Spring

*"Drive times will significantly increase."*

- A study conducted found a **delay of only 1-2 minutes during peak hours**
- As a part of this study, **we will study the impact of signal timing and pedestrian signals to improve access** and convenience for all users



# CONCERNS FOR FURTHER STUDY

Since the installation of the bike lane on East Jefferson last year, you've shared your concerns. You told us:

*"The parking lane is too narrow."*

- We increased the width of the parking lane **from 7ft to 8ft**

*We are continuously studying conditions and making improvements*



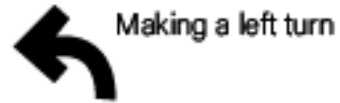


# **Small Group Discussions**



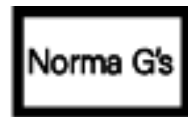
# SMALL GROUP EXERCISE

## Challenges & Opportunities



Place **red dots** where you have difficulty crossing the street, making a left turn, where flooding occurs, etc.

Use post-its to add descriptions for things not place-based, such as challenges taking the bus, safety concerns, etc.



Place **blue dots** where you shop, eat, worship, catch the bus, etc.

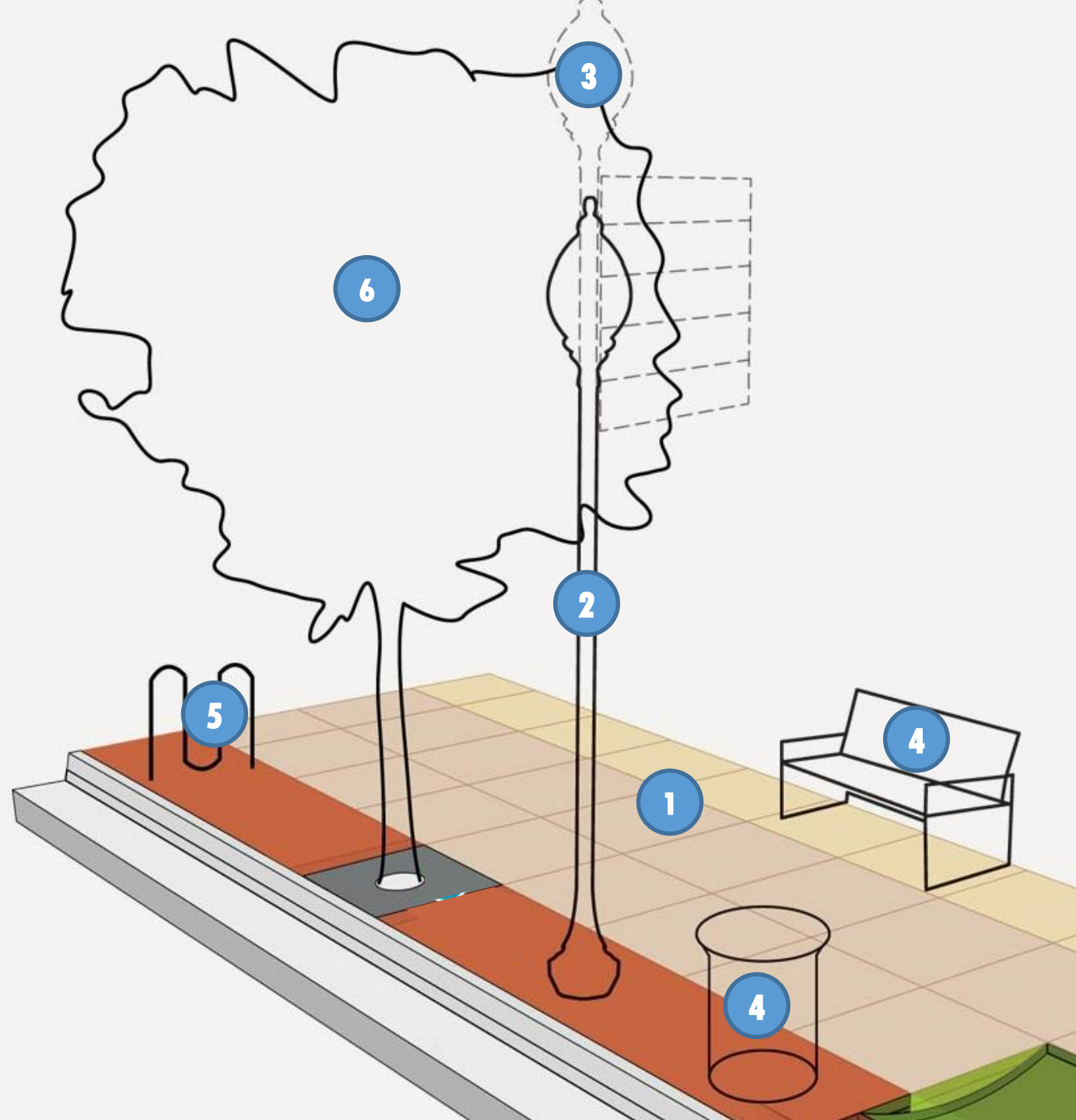
Use post-its to add descriptions or labels for things that are not place-based, such as the people, etc.



# SMALL GROUP EXERCISE

## *Streetscape Concepts*

1. Improved sidewalks and pedestrian amenities
2. Pedestrian lighting
3. Wayfinding / Banners
4. Benches and trash cans
5. Bicycle parking
6. Street trees

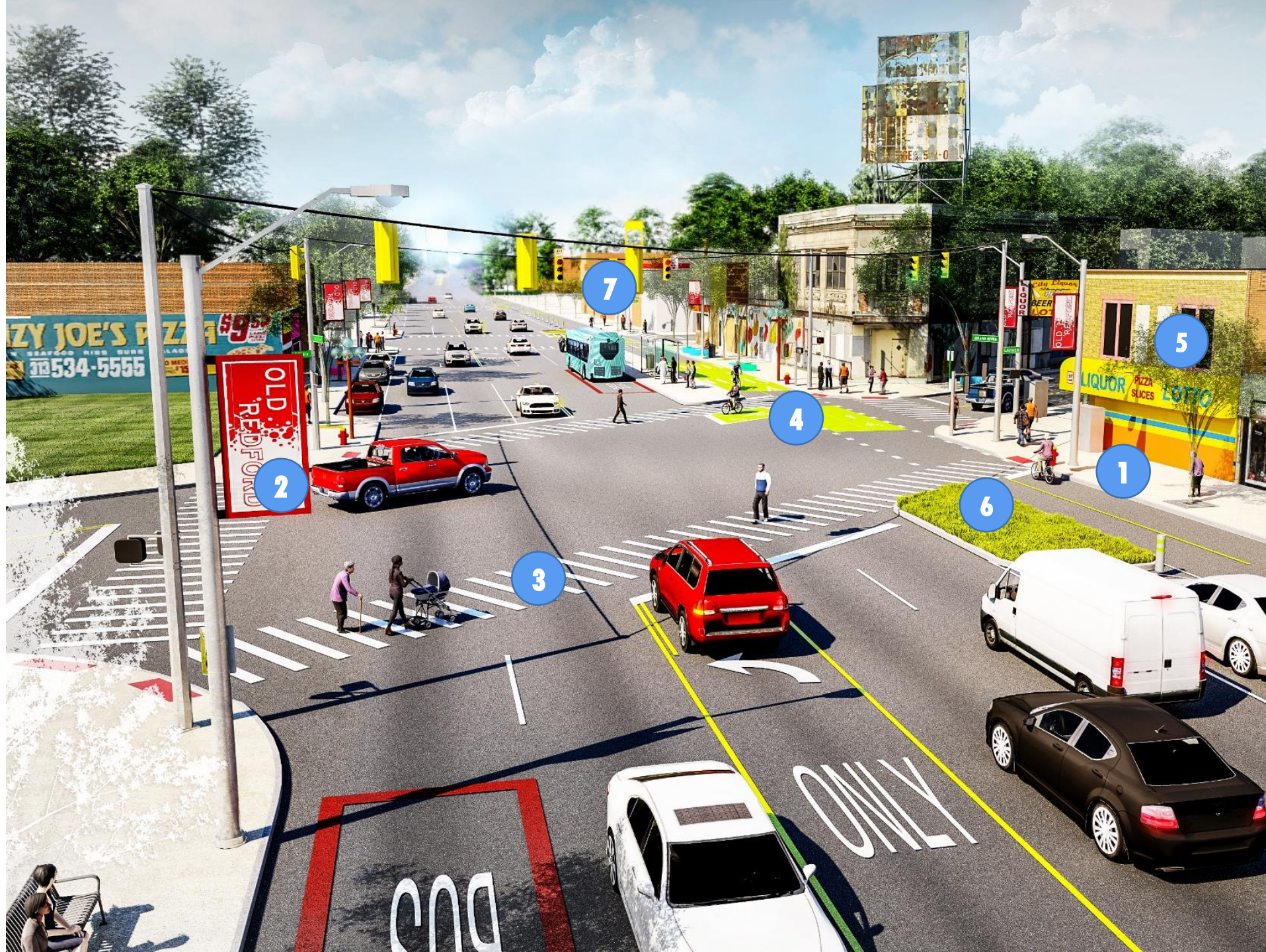




# GRAND RIVER

## Cooley to McNichols

1. Improved sidewalks
2. Banners
3. Enhanced crossings
4. Bicycle lane
5. Street trees
6. Landscaping
7. Transit Enhancements





# GRAND RIVER

## Evergreen to Glastonbury

1. Improved sidewalks
2. Shorter crossing distances
3. Street trees
4. Bicycle lane
5. Landscaping





# KERCHEVAL

## *Parker to East Grand Boulevard*

1. Improved sidewalks
2. Pedestrian lighting
3. Banners
4. Benches and trash cans
5. Street trees
6. Bicycle lane
7. Landscaping

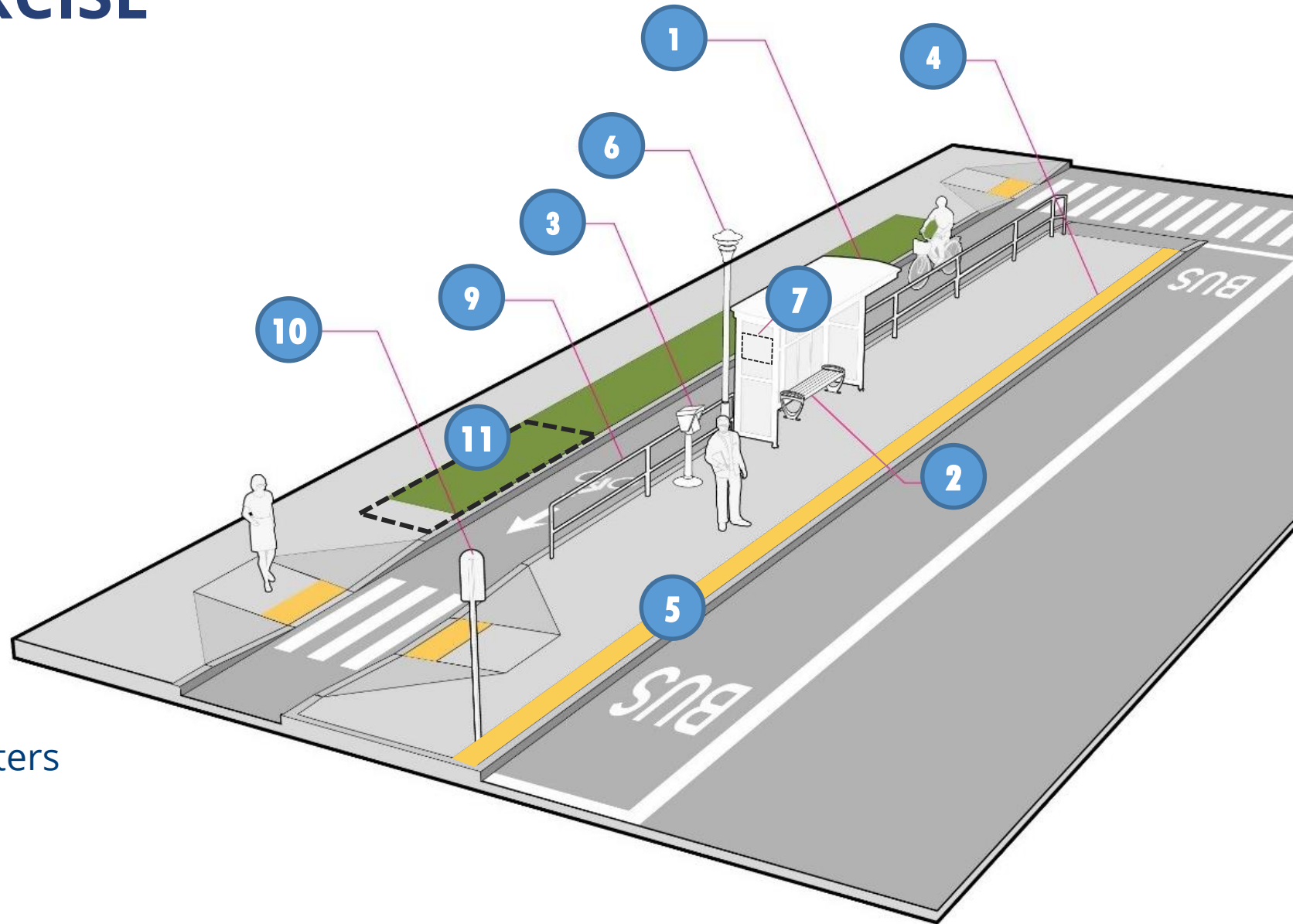




# SMALL GROUP EXERCISE

## Transit Concepts

1. Bus Shelter
2. Seating
3. Off-board fare collection
4. All door boarding
5. Level boarding
6. Lighting
7. Real-time signs
8. Universal design elements
9. Railings
10. Wayfinding / Branding
11. Mobility Hub: Bike share / eScooters



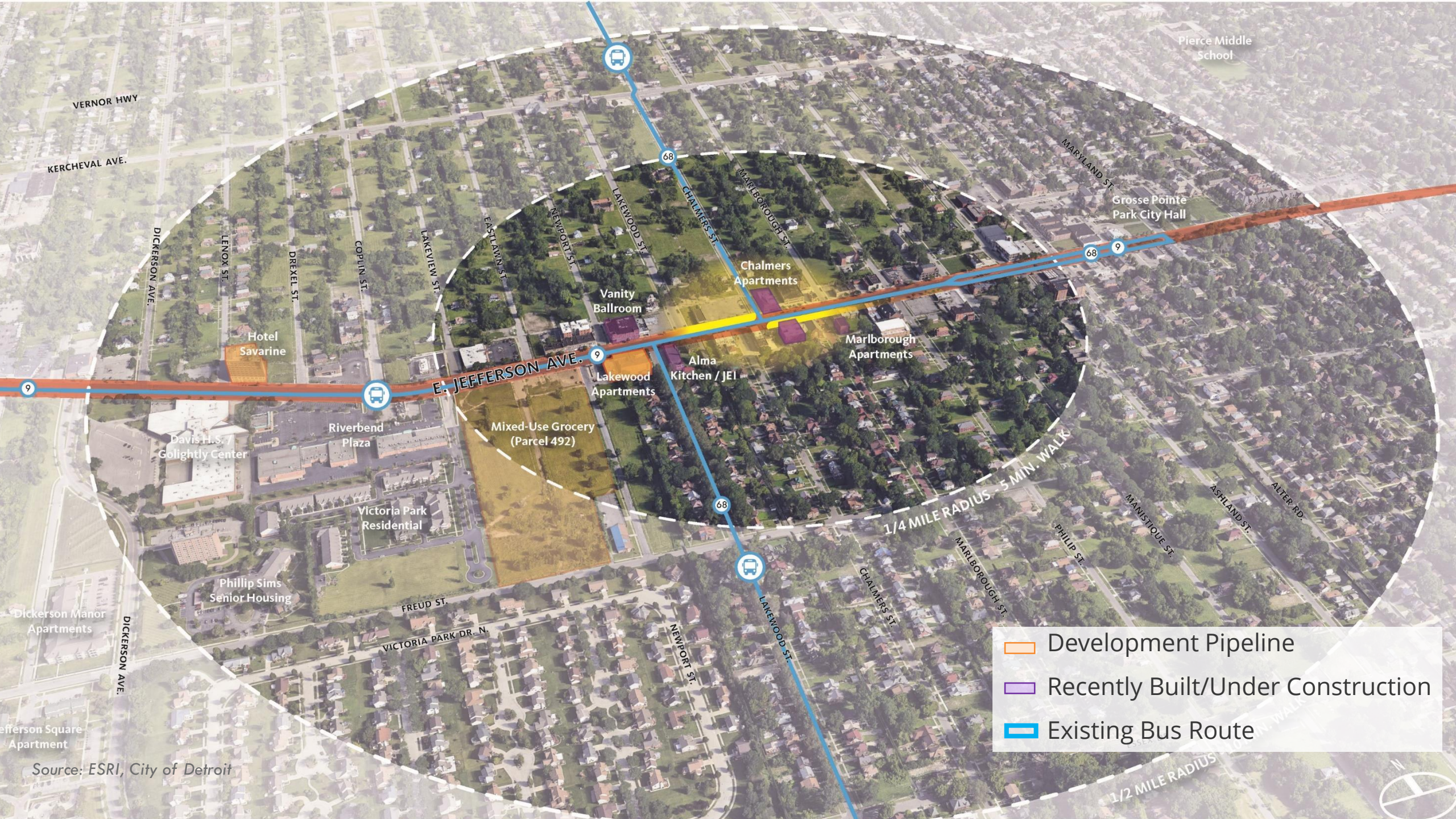
# MCNICHOLS

*Livernois to  
Greenlawn*

1. Bus shelter
2. Seating
3. Pedestrian Lighting
4. Level Boarding
5. Street trees
6. Bicycle lane with bollards







- Development Pipeline
- Recently Built/Under Construction
- Existing Bus Route

Source: ESRI, City of Detroit



**REPORT BACK**



# NEXT STEPS

*When will folks hear from us next?*

**We are continuing to study conditions and will come back to you over the summer**

*What will we be studying?*

**We will collect pedestrian and bike counts**

**We will study the potential to adjust signal timing and add push button signals**

**We will review turning movements and visibility**

**THANK YOU!**