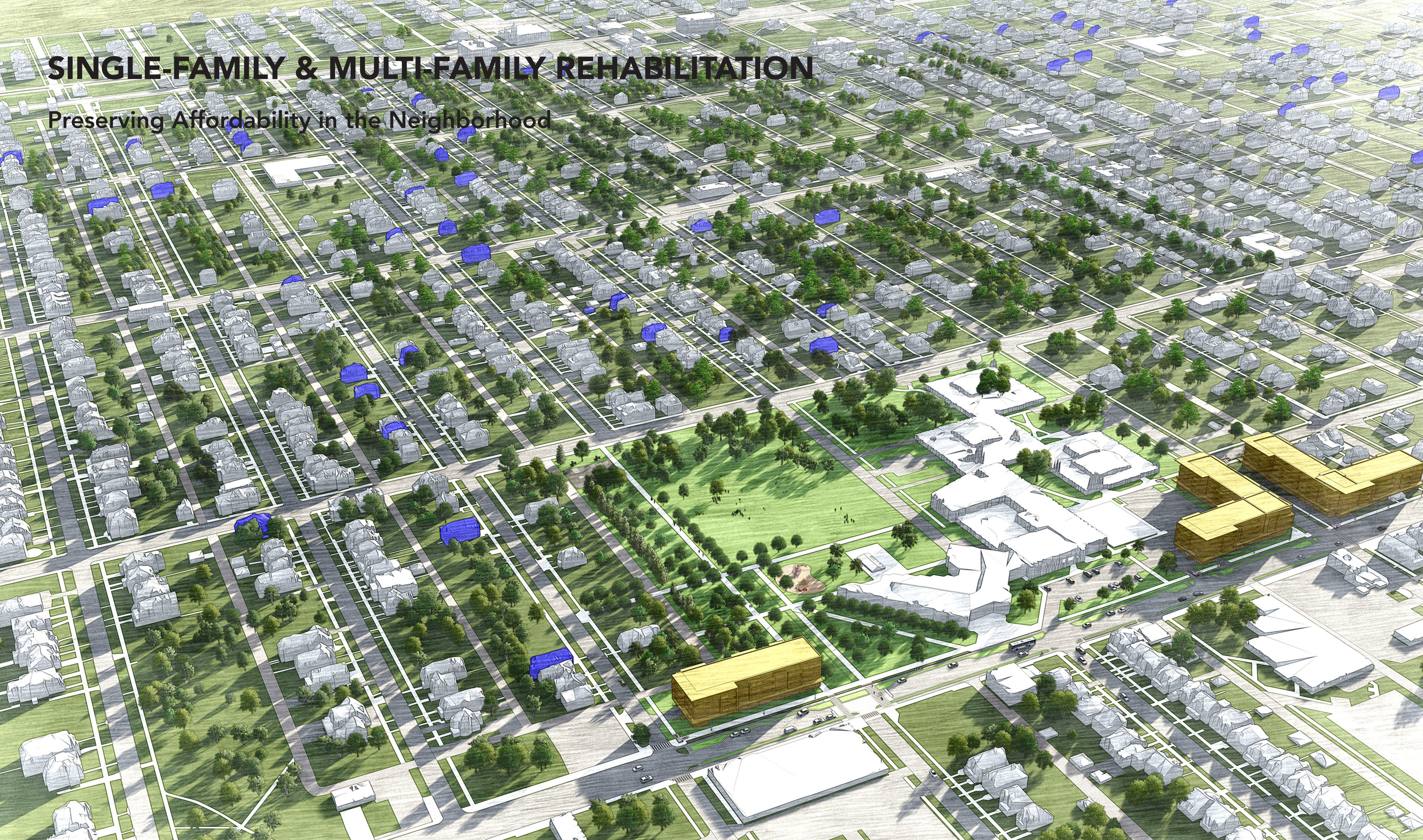


SINGLE-FAMILY & MULTI-FAMILY REHABILITATION

Preserving Affordability in the Neighborhood



NEIGHBORHOOD STABILIZATION

ISLANDVIEW/GREATER VILLAGES

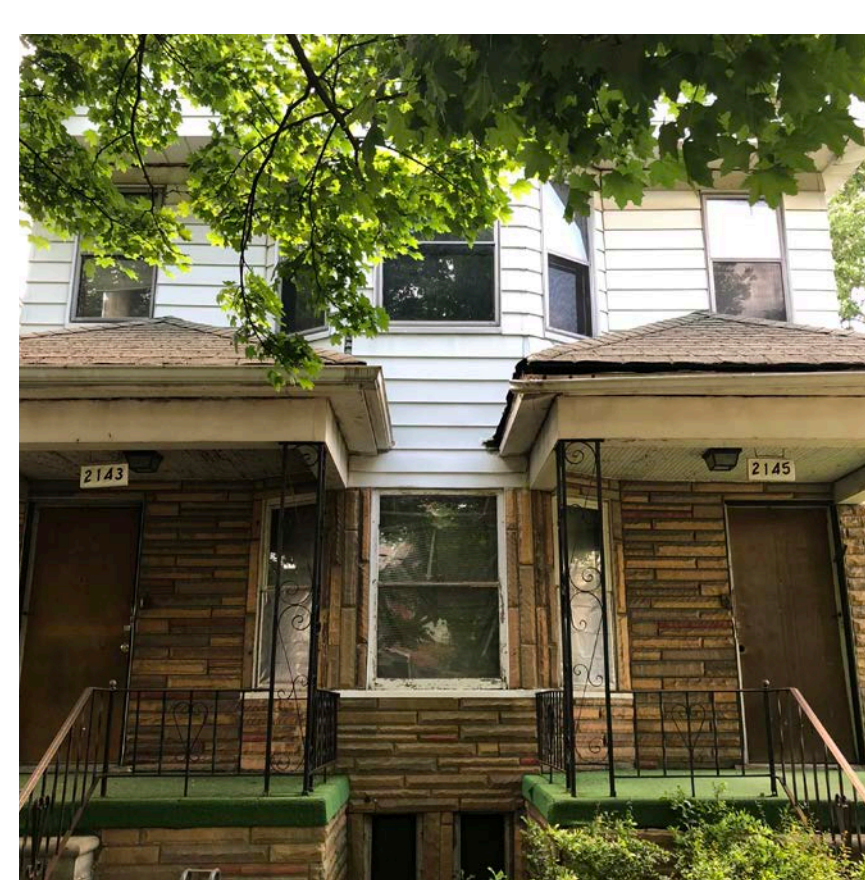
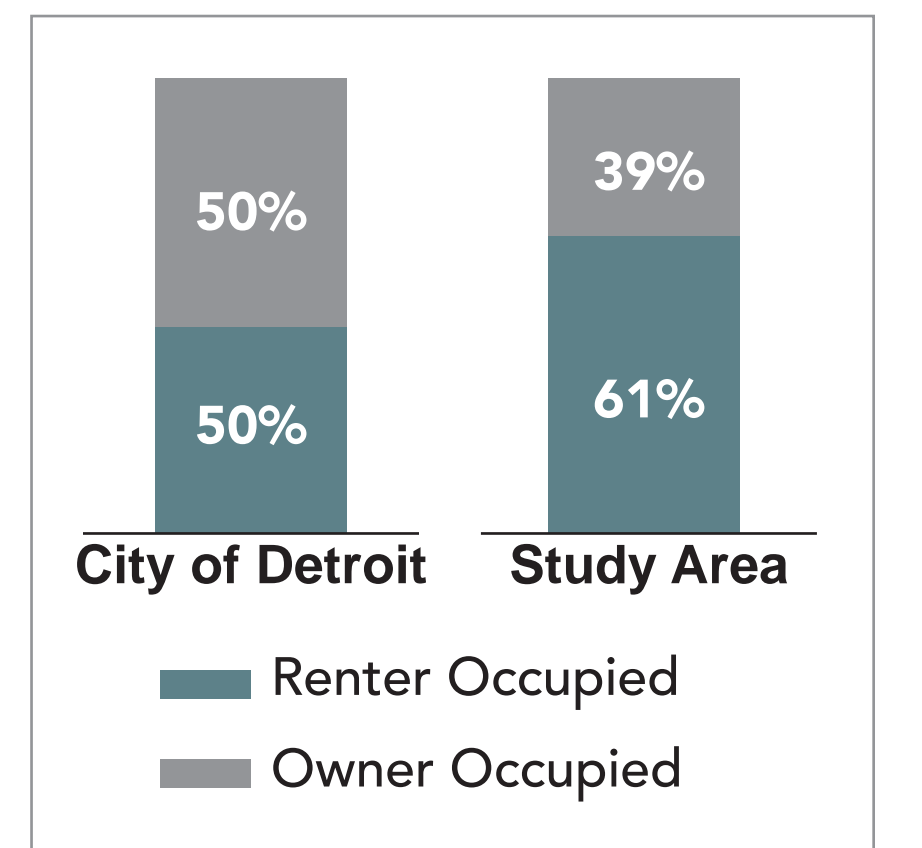
PRESERVING HOUSING

The City has identified the area north of Butzel Playfield and Butzel Family Recreation Center, where the City owns a high concentration of homes and lots to begin its rehabilitation efforts. A request for proposals (RFP) will be issued to explore development recommendations that can secure affordable housing for the community. This neighborhood stabilization effort, in parallel with street improvements, targeted retail attraction, and reinvestment in parks and recreation spaces will support a more active and walkable neighborhood for Islandview/Greater Villages residents.

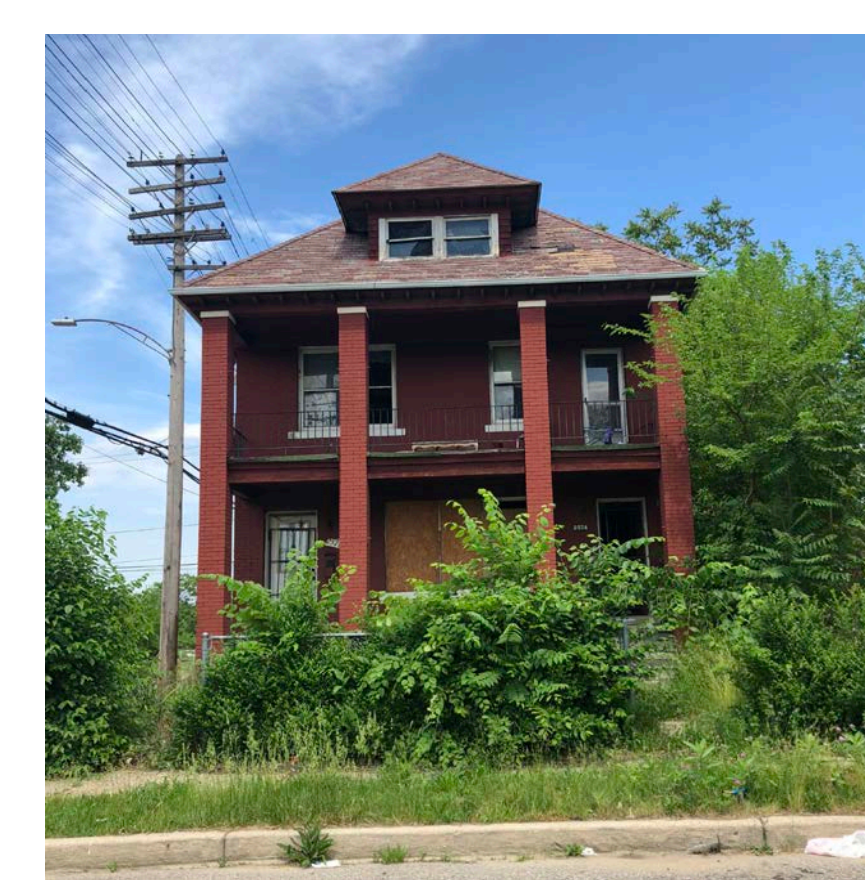


REHABILITATE HOMES

Publicly Owned Lots & Structures in Areas Targeted for Housing Stabilization



SUPPORT A BLIGHT-FREE NEIGHBORHOOD



PRESERVE AFFORDABILITY

PHASE ONE WILL REHAB:
33
 of the
44
 Publicly Owned Structures



MAINTAIN OPEN LAND

