

PART 2:
NEIGHBORHOOD
FRAMEWORK
UPDATE

COMMUNITY ENGAGEMENT | WHAT WE HEARD SO FAR...



7
NEIGHBORHOOD
AGENCY TABLES

3
PUBLIC
FORUM
MEETINGS

10
ADVISORY +
FOCUS GROUP
MEETINGS

12
WEEKS ON-SITE
OPEN OFFICE
HOURS

7
RESIDENT
STORY TELLING
SESSIONS

What we heard from residents:

- We value our neighbors and want to stay
- Safety
- Address vacant buildings, home & land
- Maintain continuity of the architectural style of existing housing
- Bring back neighborhood amenities, such as retail and educational centers

COMMUNITY ENGAGEMENT | WHAT WE HEARD

"I've lived in this neighborhood since I was 5, we were 15 children in an 8-bedroom house. If we got in trouble, neighbors would tell, we were all one big family."

Eileen Singleton, Philadelphia Ave., Detroit

NEIGHBORHOOD IDENTITY | 12TH STREET HERITAGE



PRESENTATION CONTENTS

- **STRATEGY 1:** CONNECT NEIGHBORHOODS BY IMPROVING ROSA PARKS (12TH ST.)
- **STRATEGY 2:** PROMOTE DEVELOPMENT EAST OF THE LODGE
- **STRATEGY 3:** STRENGTHEN NEIGHBORHOOD RETAIL
- **STRATEGY 4:** CREATING GREAT NEIGHBORHOOD PARKS

STRATEGY 1
CONNECT NEIGHBORHOODS:
IMPROVING
ROSA PARKS (12TH ST.)

PROJECT A | ROSA PARKS (12TH STREET) STREETScape



LANDSCAPED MEDIAN & STREET TREES



PROTECTED BIKE LANES

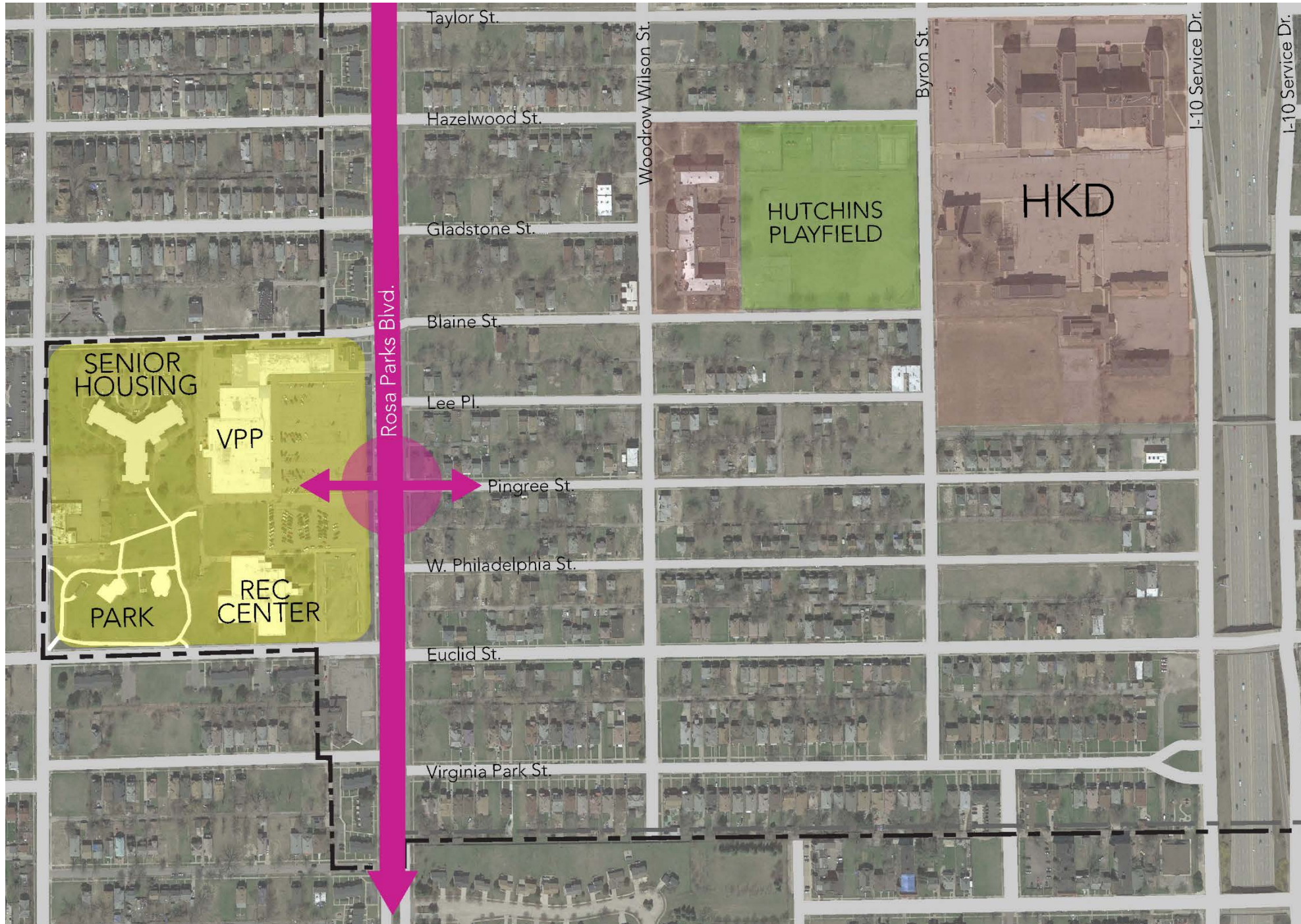


12TH ST. BRANDING & SIGNAGE



ENHANCED CROSSWALK

VIRGINIA PARK PLAZA | EXISTING CONDITIONS



1 CONNECT NEIGHBORHOOD TO COMMUNITY ASSETS

2 PROVIDE SAFE PASSAGE

3 BEAUTIFY 12TH STREET NEIGHBORHOOD

VIRGINIA PARK PLAZA | EXISTING CONDITIONS



Virginia Park Plaza Existing Entry Condition

VIRGINIA PARK PLAZA PROPOSED PROMENADE



**\$500K
CAPITAL
FUNDING**

Proposed Virginia Park Plaza Promenade

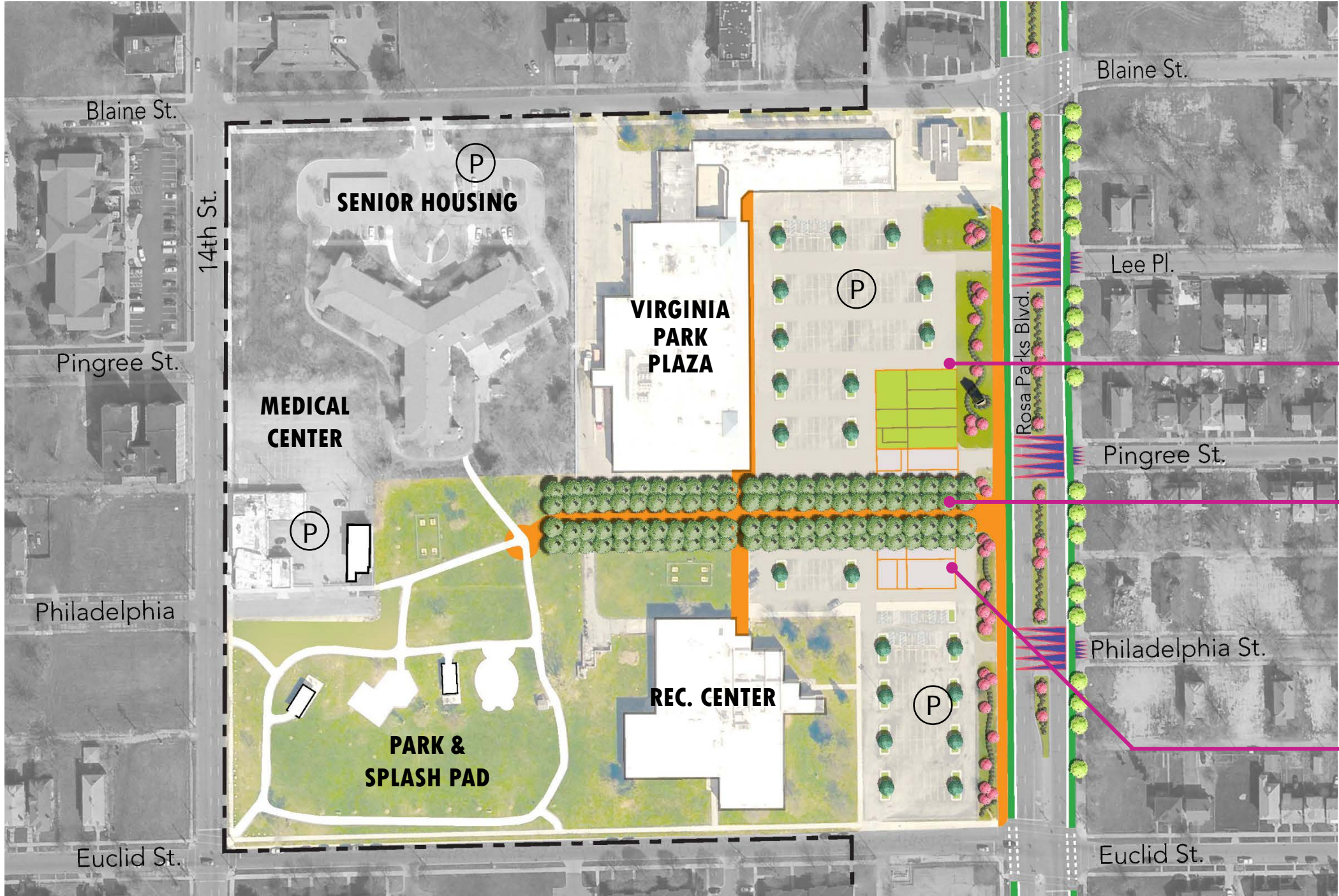
1 CREATE FRONT DOOR
ACCESS TO
COMMUNITY CORE

2 SUPPORT VPP
BUSINESS
REVITALIZATION

VIRGINIA PARK PLAZA | EXISTING CONDITIONS



VIRGINIA PARK PLAZA PROMENADE

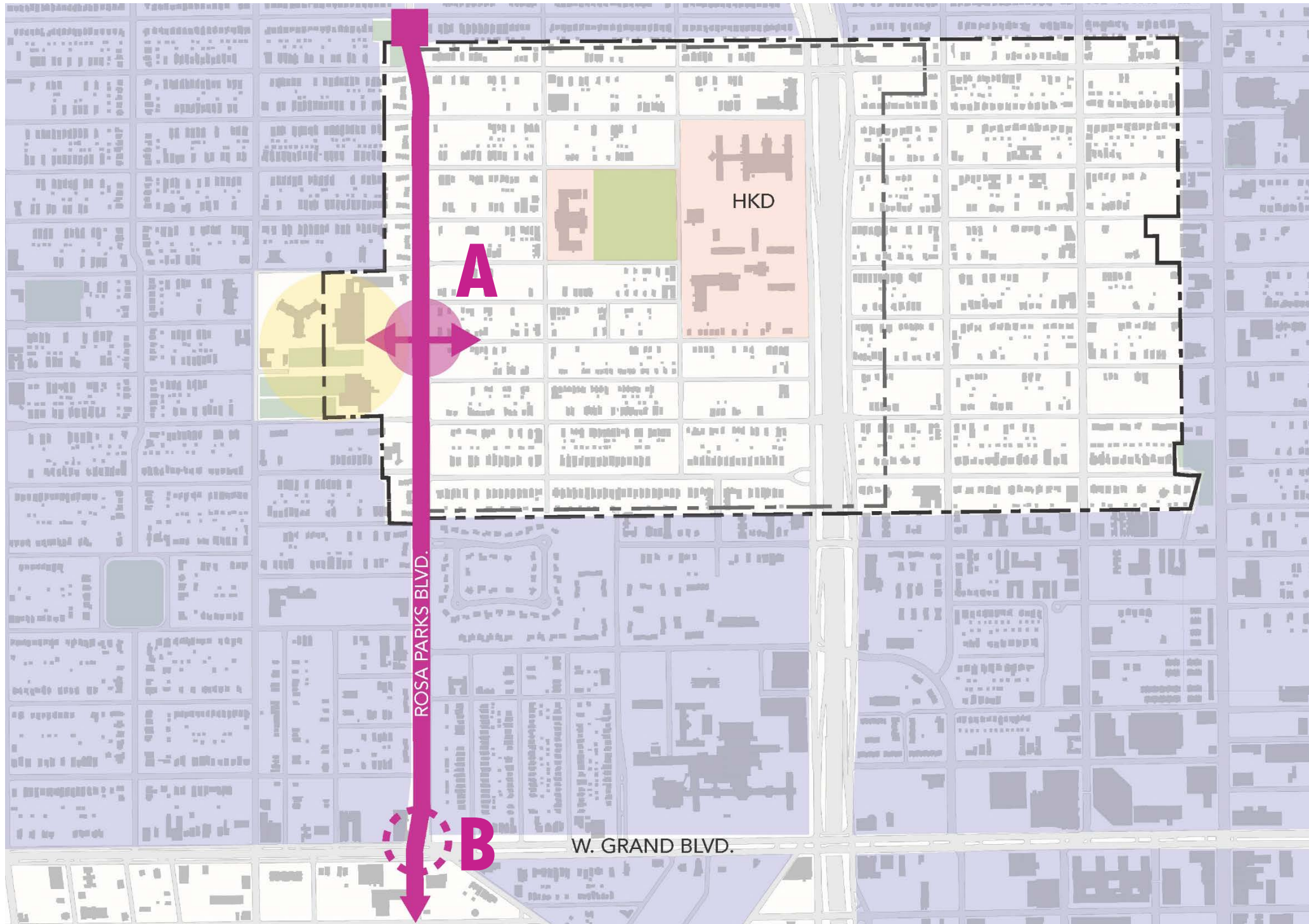


GREEN SPACE W/
HISTORIC 12TH ST.
FOOTPRINT

PROMENADE
CONNECTION FROM
12TH ST. TO PARK

POP-UP MARKET SPACE
W/ HISTORIC 12TH ST.
FOOTPRINT

LOCAL CONNECTIVITY | ROSA PARKS BLVD.



ROAD BOND PROJECTS:

A ROSA PARKS STREETScape IMPROVEMENTS

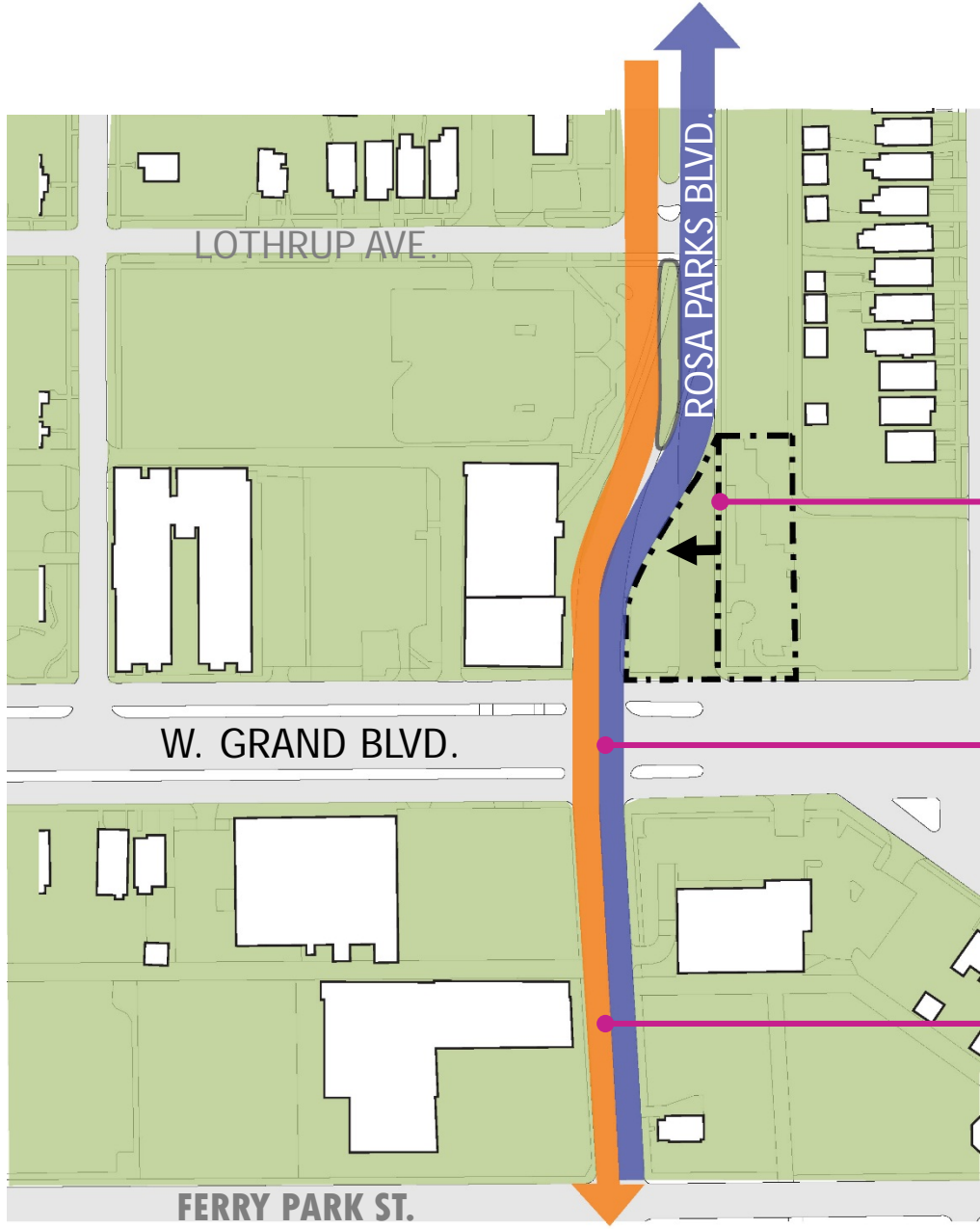
- LANDSCAPED MEDIAN + STREET TREES
- 12TH ST. SIGNAGE/BRANDING
- PROTECTED BIKE LANES
- ENHANCED CROSSING AT PINGREE ST.

B REDESIGN INTERSECTION AT GRAND BLVD.

PROJECT B | GRAND BLVD. INTERSECTION



EXISTING: North - South Traffic Pattern



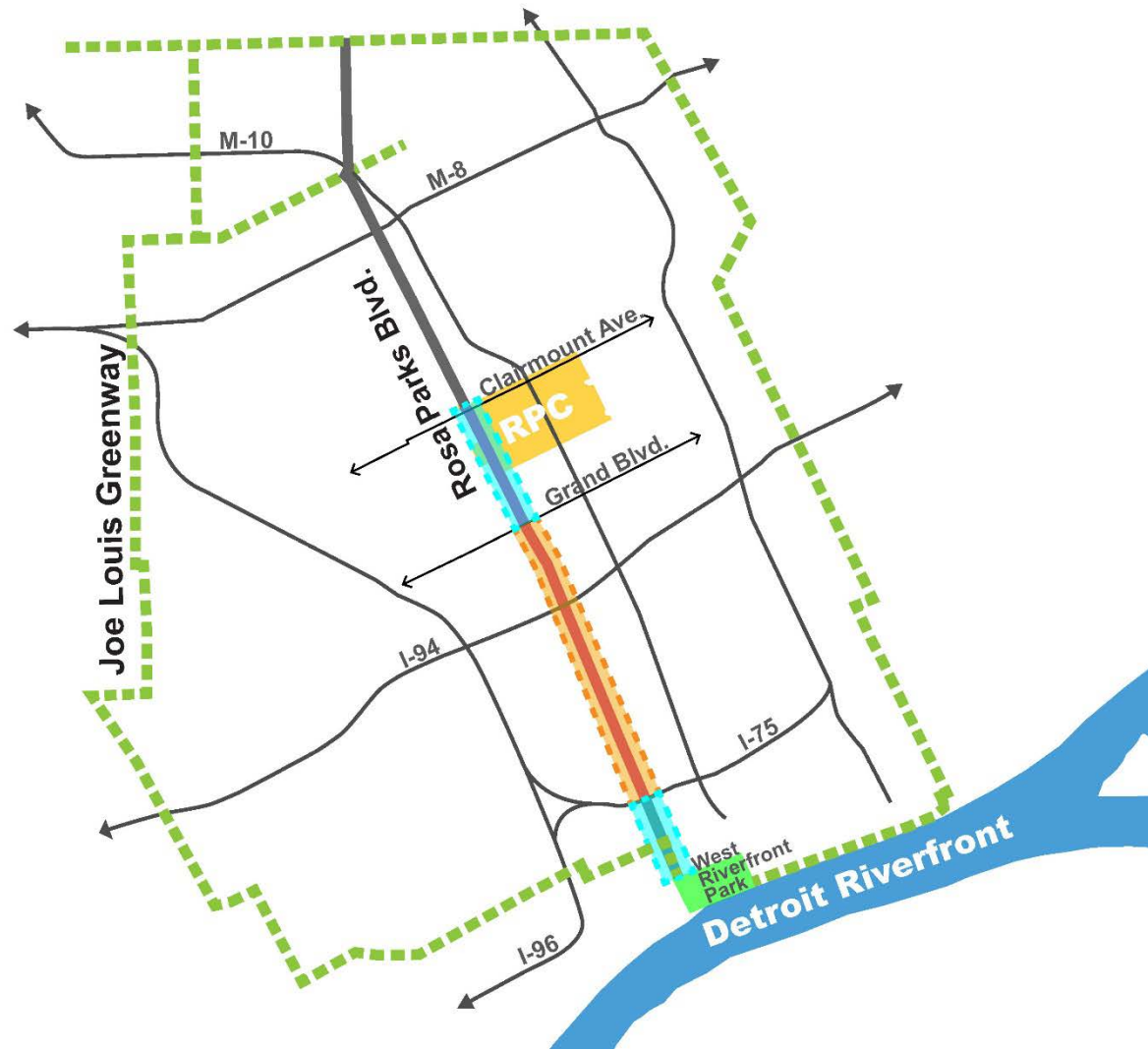
PROPOSED: Reconfigured Traffic Pattern

CLOSE NORTH- BOUND SECTION OF ROSA PARKS

REDESIGN INTERSECTION AT GRAND BLVD

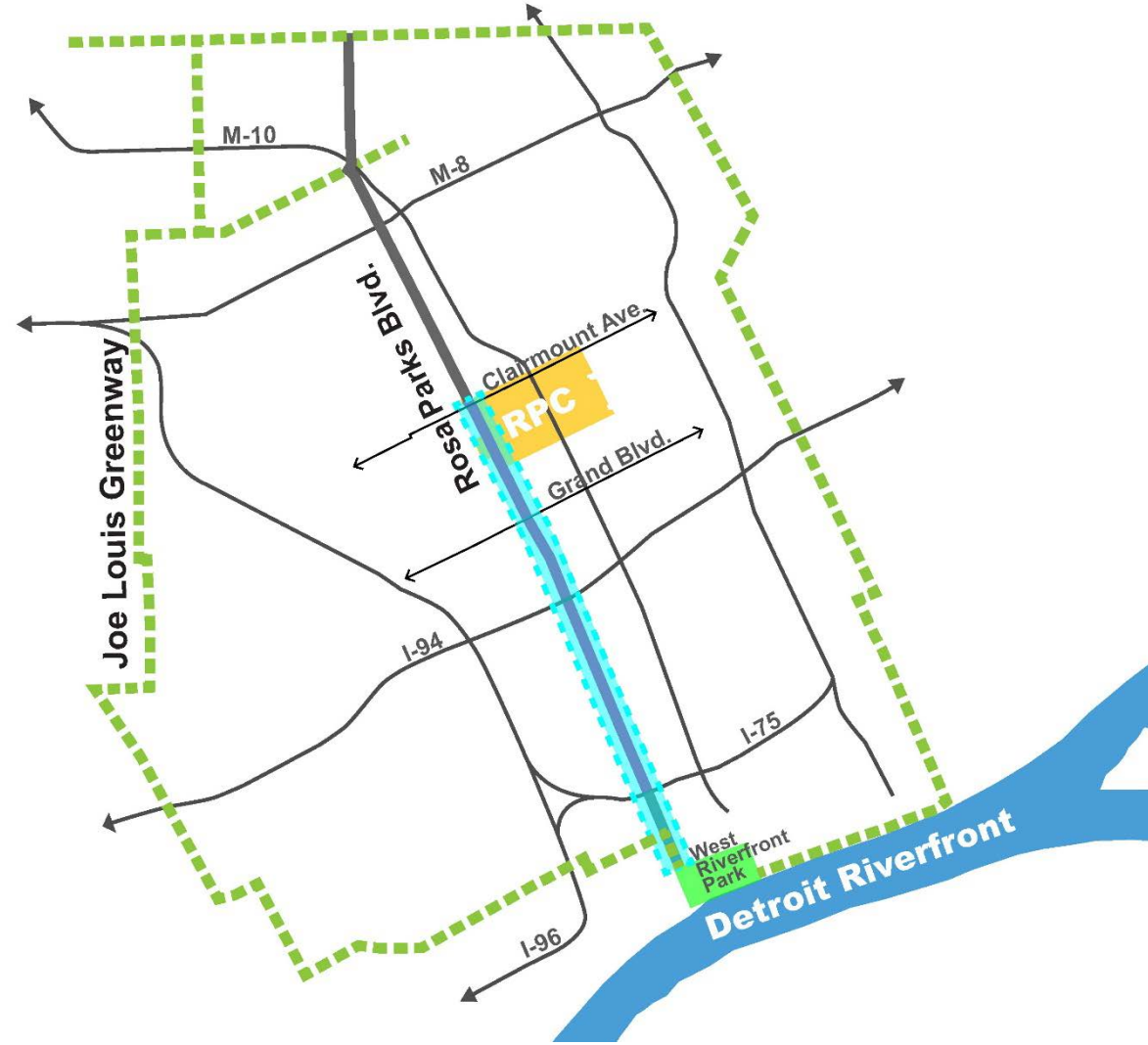
ADD BIKE LANES AND 2-WAY STREET CONVERSION

REGIONAL CONNECTIVITY | ROSA PARKS BLVD



1-WAY TRAFFIC
2-WAY TRAFFIC

EXISTING: NORTH - SOUTH TRAFFIC PATTERN



1-WAY TRAFFIC
2-WAY TRAFFIC

PROPOSED: RECONFIGURED TRAFFIC PATTERN

\$3.3M
ROAD
BOND

3.5 MI.
PROJECT
LENGTH

2018
DESIGN
2019
INSTALL

DPW
AGENCY

REGIONAL CONNECTIVITY | WEST RIVERFRONT



REGIONAL CONNECTIVITY | WEST RIVERFRONT

