



ROSA PARKS - CLAIMMOUNT

NEAR-TERM NEIGHBORHOOD TRANSFORMATION STRATEGIES



WELCOME!

12TH STREET COMMUNITY
CELEBRATE THE NEXT 50 YEARS

INTRODUCING:

- **MARY SHEFFIELD:** CITY COUNCIL
- **VINCE KEENAN:** DIRECTOR, DEPT. OF NEIGHBORHOODS
- **MAURICE COX:** DIRECTOR, PLANNING AND DEVELOPMENT DEPT.
- **STEVE LEWIS:** DESIGN DIRECTOR, CENTRAL REGION
- **DAN RIEDEN:** LEAD LANDSCAPE ARCHITECT, CENTRAL REGION

MEETING OVERVIEW:

- **PART 1:** DEVELOPER'S UPDATE
- **PART 2:** NEIGHBORHOOD FRAMEWORK UPDATE
- **PART 3:** OPEN HOUSE

SHOUT OUTS:

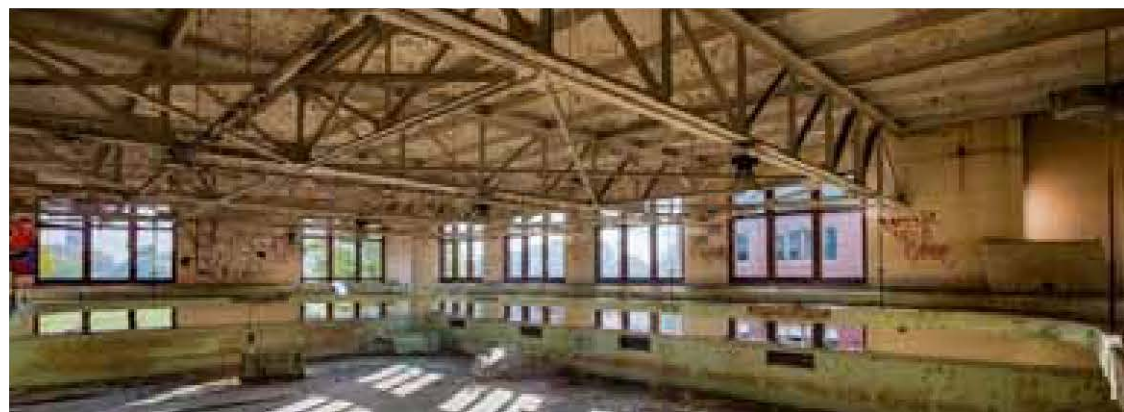
- **ERIN GUNN:** PROVIDING MUSIC
- **PEACHES & GREENS:** PROVIDING REFRESHMENTS

OPEN HOUSE:

- **SERVICE TABLES:**
 - DETROIT ECONOMIC GROWTH CORPORATION [DEGC]
 - DETROIT LAND BANK AUTHORITY [DLBA]
 - CENTRAL DETROIT CHRISTIAN COMMUNITY DESIGN CENTER [CDCCDC]
 - MIDTOWN DETROIT INC. [MDI]
- **PRESENTATION BOARDS:** HOSTED BY PDD & HKD
- **SIGN-IN TABLE:** FOR QUESTIONS & COMMENTS

PART 1:
DEVELOPER'S
UPDATE

HERMAN KIEFER DEVELOPMENT



HKD | UPDATES



CROSMAN + HUTCHINS SCHOOLS:

- WINDOWS CLEAR BOARDED + PERIMETER SECURED



HERMAN KIEFER:

- LIGHTS + POWER RESTORED, SECURITY CAMERAS ACTIVATED



HUTCHINS SCHOOL:

- ROOF FIXED, WINDOWS CLEAR BOARDED, PERIMETER SECURED

HKD | UPDATES

HERMAN KIEFER:

- LIGHTS + POWER RESTORED, SECURITY CAMERAS ACTIVATED



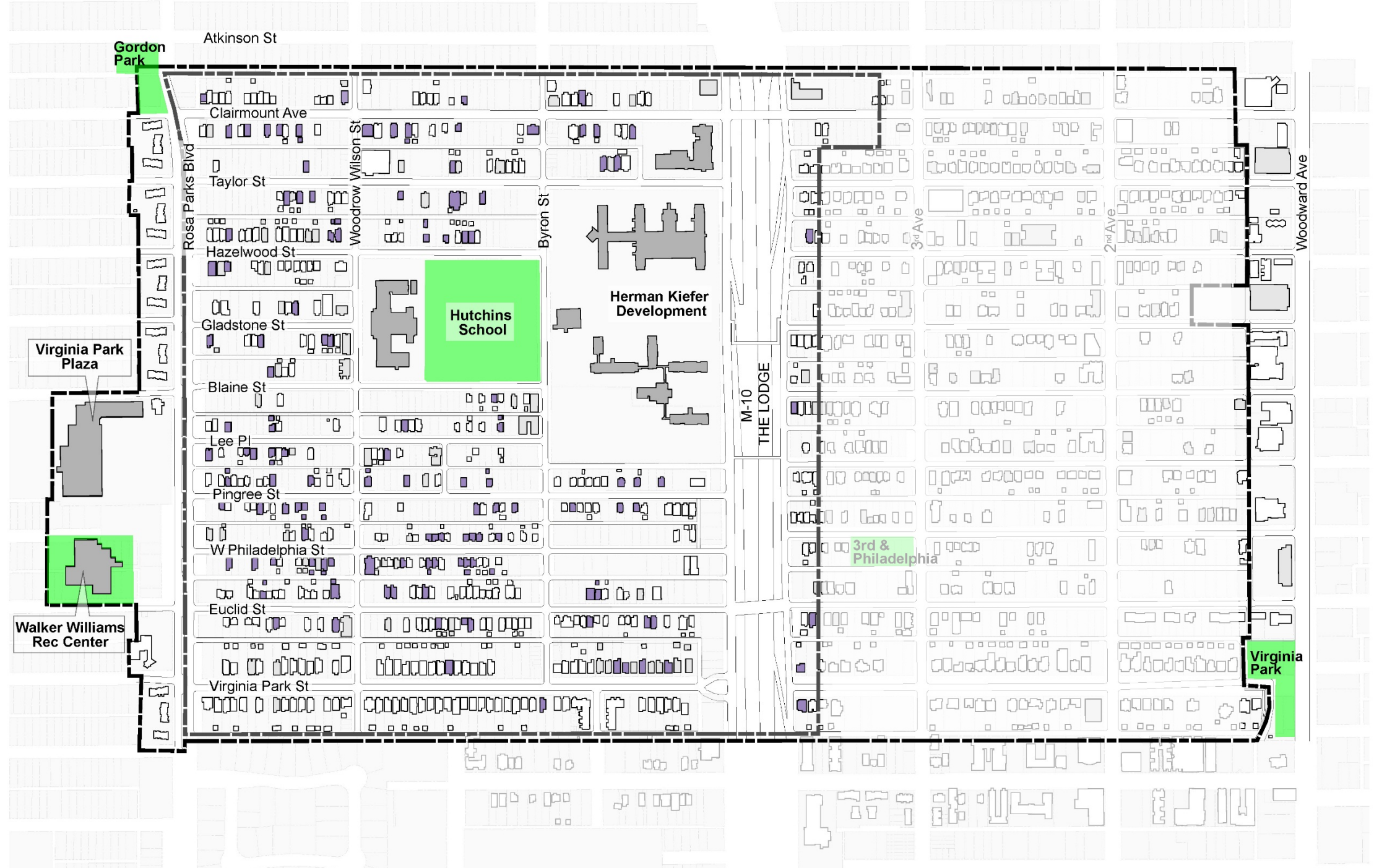
HKD | NEIGHBORHOOD CLEAN UP

95 DLBA
STRUCTURES
BOARDED UP

45,000 LBS
OF GARBAGE
REMOVED

5,000 HRS
OF CLEAN-UP
LABOR

40+
FIRE HYDRANTS
PAINTED



HKD | BOARD UPS



HKD | CLEAN UP



HKD | CLEAN UP





NEIGHBORHOOD ADVISORY COMMITTEE

- GEORGE ADAMS
- DR. ARMSTRONG
- KATHY BLAKE
- MARQUISHA BOOKER
- SHARON CALMESE
- RENEE GUNN
- LORENZO JONES
- MARQUITA REESE
- RAYMOND THOMAS

CENTRAL DETROIT CHRISTIAN CDC UPDATE: PROGRAMS



Teaching Garden



Summer Camp

CENTRAL DETROIT CHRISTIAN CDC UPDATE: PROGRAMS



Art House



Summer Workforce

CENTRAL DETROIT CHRISTIAN CDC UPDATE: PHILADELPHIA PARK



Neighborhood Fitness Course

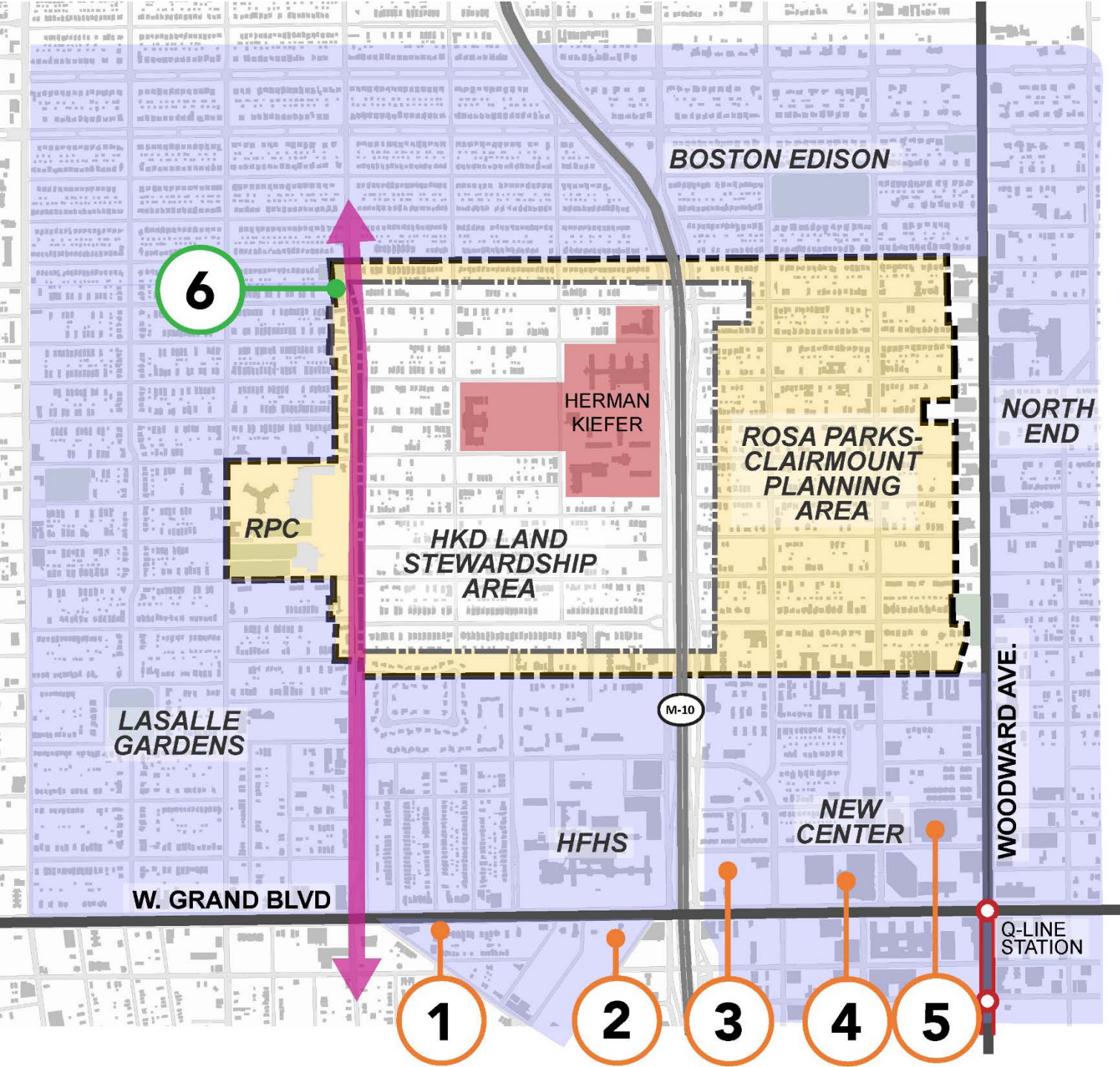


Philadelphia Park

SURROUNDING INVESTMENTS

STABILIZE THE NEIGHBORHOOD AROUND HERMAN KIEFER DEVELOPMENT (HKD)

USE 12TH STREET TO CONNECT AREAS OF STRENGTH AND COMMUNITY ASSETS



- 1. MOTOWN MUSEUM - \$50M
- 2. HFHS SOUTH CAMPUS- \$155M
- 3. 3RD & GRAND - \$53M
- 4. FISHER BLDG. - \$50M
- 5. KAHN BLDG. - \$50M
- 6. GORDON PARK - \$585K

1. MOTOWN MUSEUM - \$50M



2. HFHS SOUTH CAMPUS- \$155M



3. 3RD & GRAND



4. FISHER BLDG. - \$50M



5. KAHN BLDG. - \$50M



LEE PLAZA

