

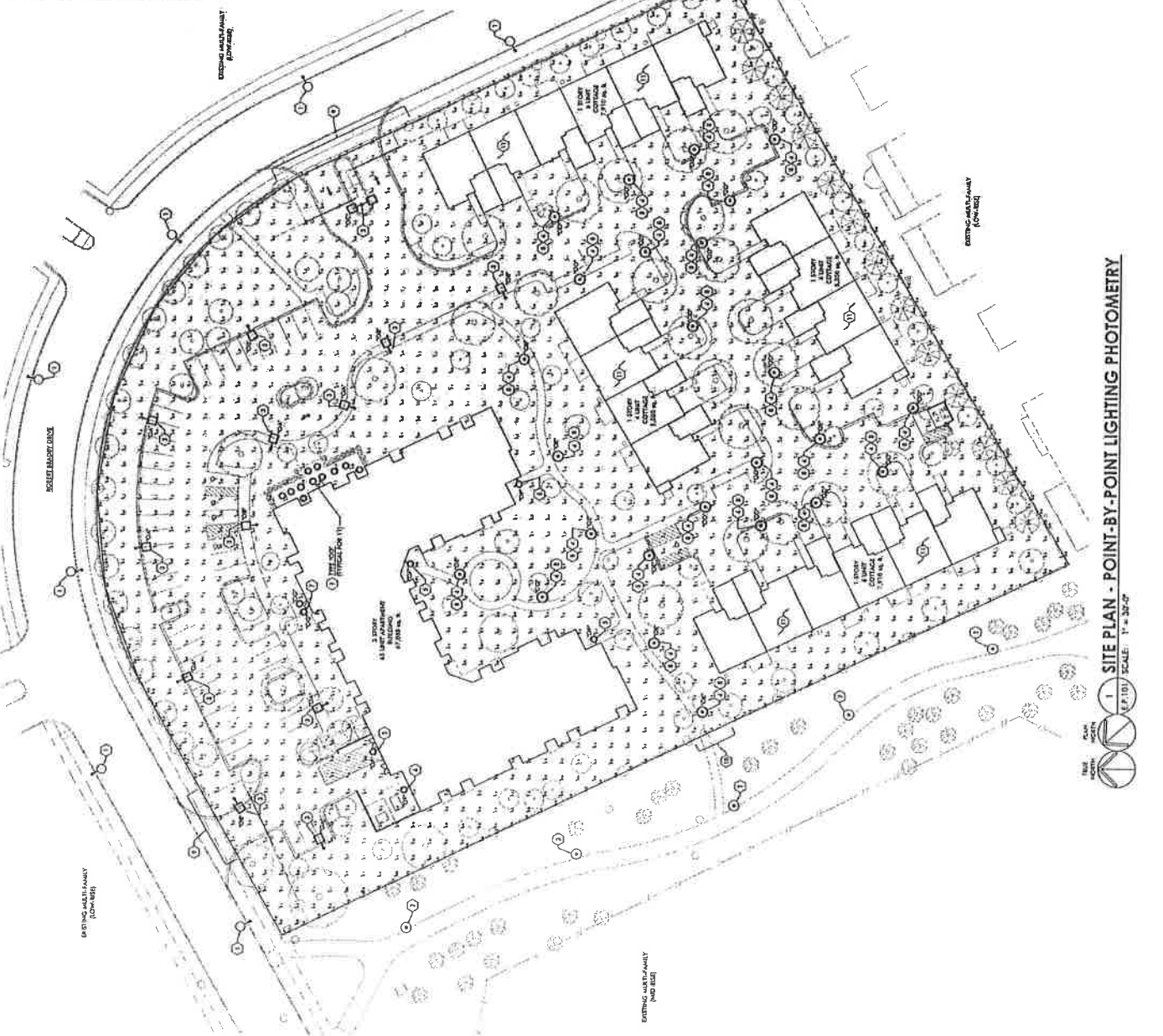
Category	Item	Quantity	Unit	Material	Notes
Structural Steel	1" x 12" I-Beam	100	ft	A36	For roof structure
	2" x 12" I-Beam	50	ft	A36	For roof structure
	4" x 12" I-Beam	20	ft	A36	For roof structure
	6" x 12" I-Beam	10	ft	A36	For roof structure
	8" x 12" I-Beam	5	ft	A36	For roof structure
	10" x 12" I-Beam	2	ft	A36	For roof structure
	12" x 12" I-Beam	1	ft	A36	For roof structure
	14" x 12" I-Beam	1	ft	A36	For roof structure
	16" x 12" I-Beam	1	ft	A36	For roof structure
	18" x 12" I-Beam	1	ft	A36	For roof structure
Structural Steel	4" x 6" L-Beam	200	ft	A36	For roof structure
	6" x 6" L-Beam	100	ft	A36	For roof structure
	8" x 6" L-Beam	50	ft	A36	For roof structure
	10" x 6" L-Beam	25	ft	A36	For roof structure
	12" x 6" L-Beam	10	ft	A36	For roof structure
	14" x 6" L-Beam	5	ft	A36	For roof structure
	16" x 6" L-Beam	2	ft	A36	For roof structure
	18" x 6" L-Beam	1	ft	A36	For roof structure
	20" x 6" L-Beam	1	ft	A36	For roof structure
	24" x 6" L-Beam	1	ft	A36	For roof structure

Item	Quantity	Unit	Material	Notes
1. 1" x 12" I-Beam	100	ft	A36	For roof structure
2. 2" x 12" I-Beam	50	ft	A36	For roof structure
3. 4" x 12" I-Beam	20	ft	A36	For roof structure
4. 6" x 12" I-Beam	10	ft	A36	For roof structure
5. 8" x 12" I-Beam	5	ft	A36	For roof structure
6. 10" x 12" I-Beam	2	ft	A36	For roof structure
7. 12" x 12" I-Beam	1	ft	A36	For roof structure
8. 14" x 12" I-Beam	1	ft	A36	For roof structure
9. 16" x 12" I-Beam	1	ft	A36	For roof structure
10. 18" x 12" I-Beam	1	ft	A36	For roof structure

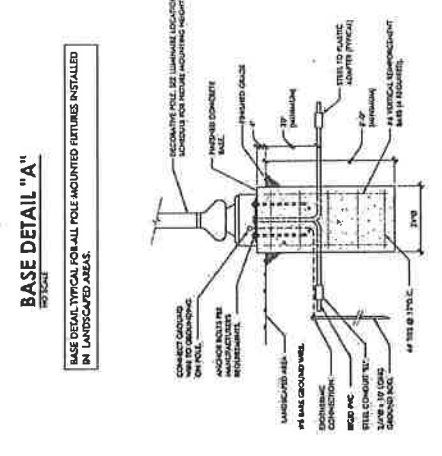
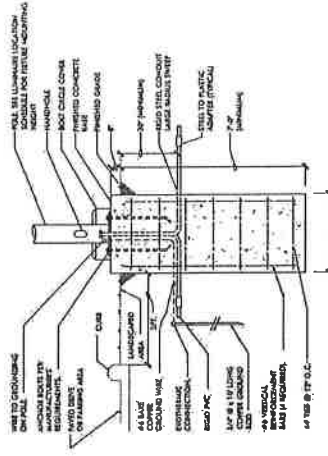
REFER TO THE ABOVE SPECIFICATIONS FOR THE MECHANICAL SCHEDULES OF ALL LIGHT FIXTURES. PROVIDE PROFILES FOR ALL FIXTURES ON THE PROJECT. REFER TO THE MECHANICAL SCHEDULES FOR ADDITIONAL INFORMATION.

**REQUIREMENTS:**

1. ALL LIGHT FIXTURES SHALL BE OF THE FOLLOWING TYPES:
  - a. RECESSED CAN LIGHTS
  - b. TRACK LIGHTS
  - c. PENDANT LIGHTS
  - d. CHANDELIER LIGHTS
  - e. TABLE LIGHTS
  - f. TORchiere LIGHTS
  - g. WALL MOUNTED LIGHTS
  - h. FLOOR MOUNTED LIGHTS
  - i. OUTDOOR LIGHTS
2. ALL LIGHT FIXTURES SHALL BE OF THE FOLLOWING TYPES:
  - a. RECESSED CAN LIGHTS
  - b. TRACK LIGHTS
  - c. PENDANT LIGHTS
  - d. CHANDELIER LIGHTS
  - e. TABLE LIGHTS
  - f. TORchiere LIGHTS
  - g. WALL MOUNTED LIGHTS
  - h. FLOOR MOUNTED LIGHTS
  - i. OUTDOOR LIGHTS
3. ALL LIGHT FIXTURES SHALL BE OF THE FOLLOWING TYPES:
  - a. RECESSED CAN LIGHTS
  - b. TRACK LIGHTS
  - c. PENDANT LIGHTS
  - d. CHANDELIER LIGHTS
  - e. TABLE LIGHTS
  - f. TORchiere LIGHTS
  - g. WALL MOUNTED LIGHTS
  - h. FLOOR MOUNTED LIGHTS
  - i. OUTDOOR LIGHTS



1 SITE PLAN - POINT-BY-POINT LIGHTING PHOTOMETRY  
 SCALE: 1" = 20'-0"  
 DATE: 10/15/15  
 DRAWN BY: [Name]  
 CHECKED BY: [Name]



**LITHONIA LIGHTING**  
FEATURES & SPECIFICATIONS

**MRP**  
MRP (Medium Range Pole) fixture with a 6" LF6N lamp.

Includes technical drawings of the fixture and lamp, and a table of specifications.

Item	Description	Quantity	Unit
1	MRP Pole	1	Pole
2	6" LF6N Lamp	1	Lamp
3	MRP Mounting Hardware	1	Kit
4	MRP Pole Base	1	Base

**LITHONIA LIGHTING**  
FEATURES & SPECIFICATIONS

**6" LF6N**  
6" LF6N (Low Foot Candle) lamp.

Includes technical drawings of the lamp and a table of specifications.

Item	Description	Quantity	Unit
1	6" LF6N Lamp	1	Lamp
2	6" LF6N Mounting Hardware	1	Kit
3	6" LF6N Pole Base	1	Base

**RAVEN SMALL RISER SERIES**  
BUILDING MATERIALS

Includes technical drawings of the riser and a table of specifications.

Item	Description	Quantity	Unit
1	Riser	1	Riser
2	Riser Mounting Hardware	1	Kit
3	Riser Pole Base	1	Base

**WST LED Architectural Wall Space**

Includes technical drawings of the wall space fixture and a table of specifications.

Item	Description	Quantity	Unit
1	WST LED Wall Space	1	Wall Space
2	WST LED Mounting Hardware	1	Kit
3	WST LED Pole Base	1	Base

