

D4 Developer Summit

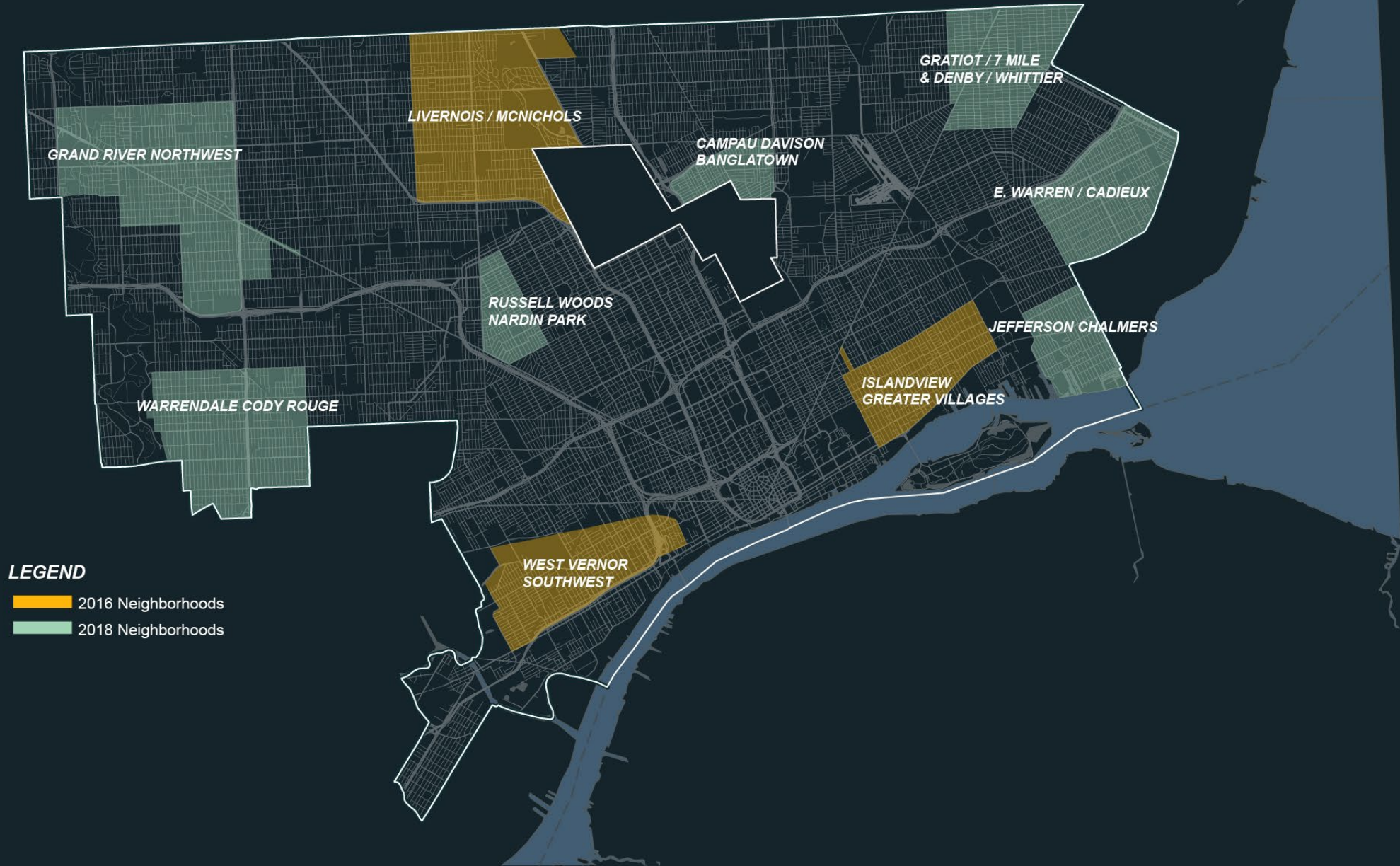
District Development



TAKE PART
Opportunity Rising



STRATEGIC NEIGHBORHOODS



EAST WARREN

COMMERCIAL CORRIDOR




LEGEND

- Yellow square: OCCUPIED STRUCTURE (PRIVATE/ACTIVE)
- Green square: VACANT STRUCTURE (PRIVATE)
- Red square: VACANT STRUCTURE (PUBLIC)
- Orange square: VACANT LAND (PRIVATE)
- Brown square: VACANT LAND (PUBLIC)
- Blue square: DEVELOPMENT SITE
- Grey square: PARKING

BLIGHT REMEDIATION

- Red circle: BOARD
- Red square: FENCE
- Red triangle: PAINT
- Red diamond: RAZOR WIRE/FENCE
- Red diamond with white center: SIGN
- Red cross: SIGN SUPPORT



DEE
SMOKEN ACES NIGHT LOUNGE



16115
FOR RENT

LEON'S
DABLE APPLIANCES
332-0630
NK STOVE WASH & DRYERS

WE
SERV
APPL

16119 E Warren - BEFORE



16119 E Warren - AFTER

E WARREN - NEIGHBORHOOD ECONOMIC DEVELOPMENT

PUBLIC PARKING LOT



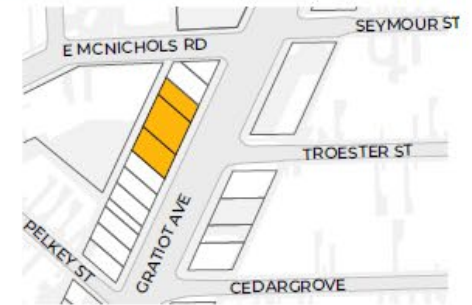
ARPA FUNDED PARKING LOT DEVELOPMENT

4899 & 4893 Grayton Street

17 Total New Spaces, including 2 handicap spaces & 2 EV charging stations

Status: Paving & striping complete. EV charging station installation to be completed Spring 2024.

Open to the public in May 2024.



E WARREN - NEIGHBORHOOD ECONOMIC DEVELOPMENT

PUBLIC SPACE



COURVILLE PLAZA

Located at Courville St & E. Warren, these lots were completed November 2023.



COMMERCIAL DEVELOPMENT

BEFORE

16703 E Warren



COMMERCIAL DEVELOPMENT

FUTURE DEVELOPMENT

16703 E Warren
The Deco



COMMERCIAL DEVELOPMENT

BEFORE

16621 E Warren



COMMERCIAL DEVELOPMENT

FUTURE DEVELOPMENT

16621 E Warren
Arthur Murray



E WARREN - NEIGHBORHOOD ECONOMIC DEVELOPMENT

COMMERCIAL DEVELOPMENT

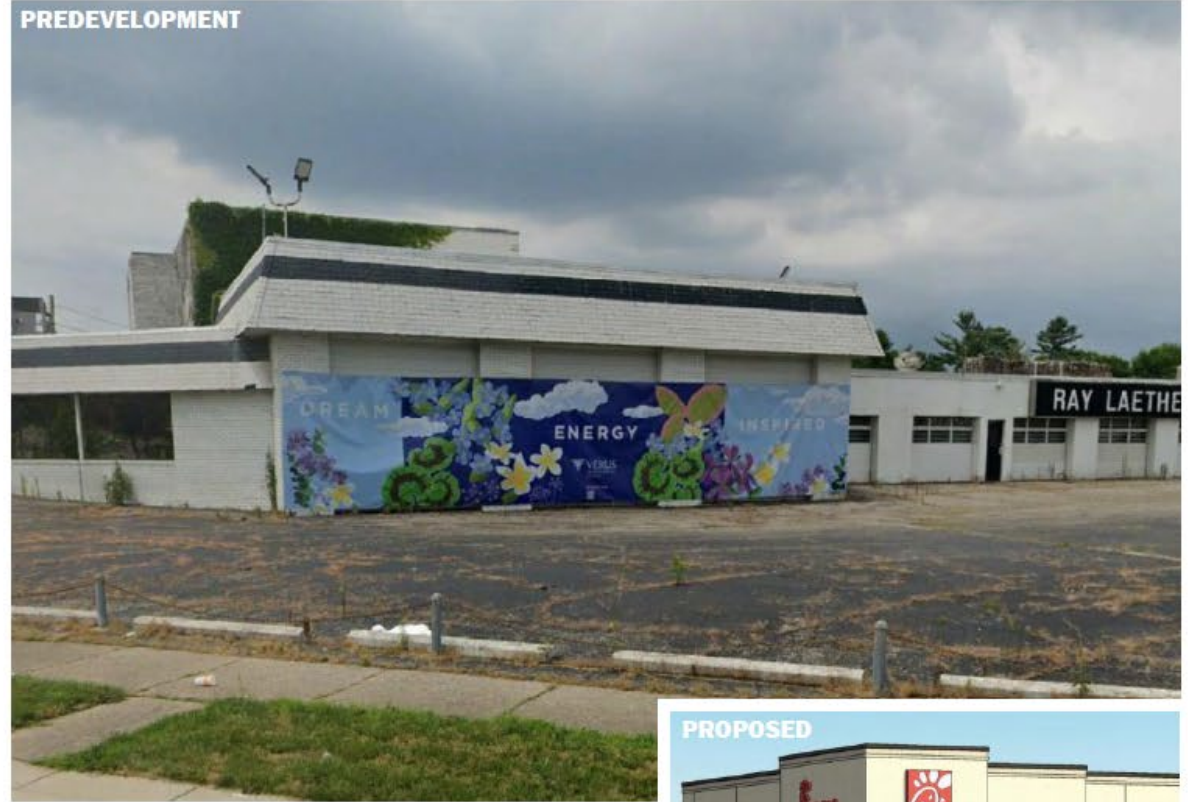
PREDEVELOPMENT



SAVVY SLIDERS

6181 Cadieux

PREDEVELOPMENT



CHICK-FIL-A

17761 Mack Ave

PROPOSED



FOR SALE
PRIVATELY-OWNED

15500 E Warren Ave

\$750,000



FOR SALE
PRIVATELY-OWNED

16209 E Warren Ave

\$169,900



KELLY RD

COMMERCIAL CORRIDOR



BLUE MARTINI
15000 Houston Whittier



CHUNGS CARRYOUT
12518 Kelly



GREY BOX PROPERTY
12430 - 12436 Kelly



ACADEMY OF BEANIE CARE
12422 Kelly



HAMMERTIME HARDWARE
11616 Whittier



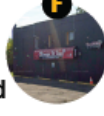
PROSPERITY LEARNING CENTER
11220 Whittier Ave



D&S GLASS AND DOORS
11010 Whittier Ave



THE HUB
12400 Kelly
Predevelopment.



CHOP IT UP
11364 Kelly Rd

LEGEND

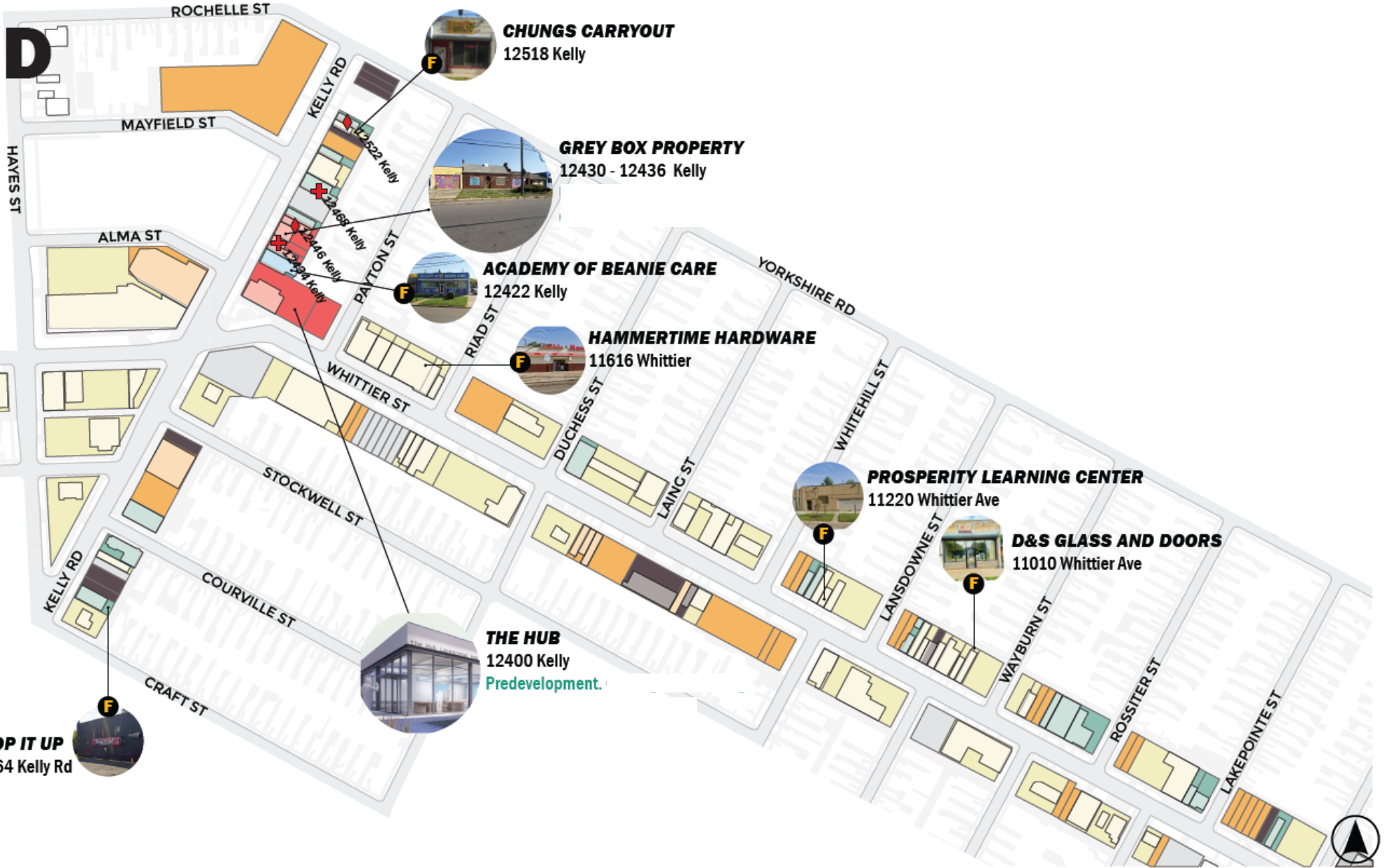
- OCCUPIED STRUCTURE (PRIVATE/ACTIVE)
- VACANT STRUCTURE (PRIVATE)
- VACANT STRUCTURE (PUBLIC)
- VACANT LAND (PRIVATE)
- VACANT LAND (PUBLIC)
- DEVELOPMENT SITE
- PARKING

BLIGHT REMEDIATION

- BOARD
- FENCE
- PAINT
- RAZOR WIRE/FENCE
- SIGN
- SIGN SUPPORT

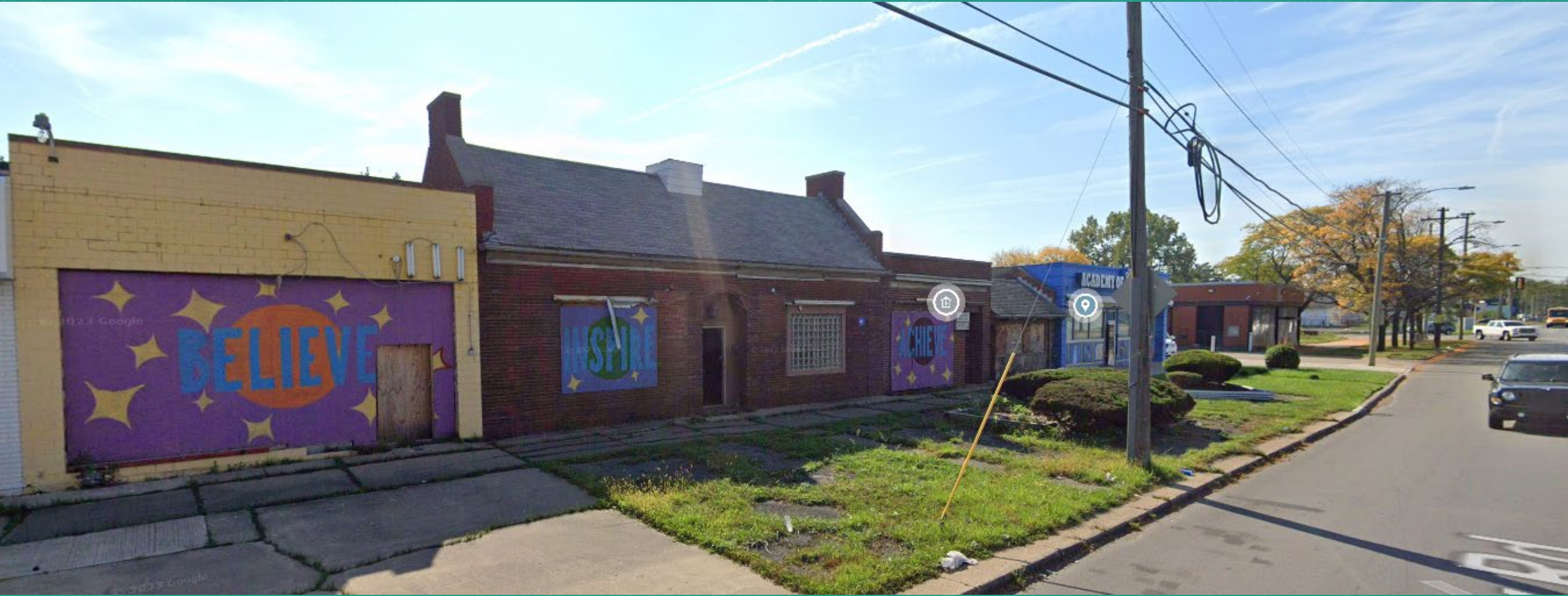
SNF SPARK GRANT

- MURAL
- FACADE



GREY BOX PROPERTY

12430 – 12436 Kelly



***Future Marketing Candidate**

FOR SALE
PRIVATELY-OWNED

11426 Kelly

\$60,000



EAST JEFFERSON

COMMERCIAL CORRIDOR

PRIVATE BUILDING SALE

14313 E Jefferson



CITY OWNED PROPERTY VANITY BALLROOM

14201 E Jefferson

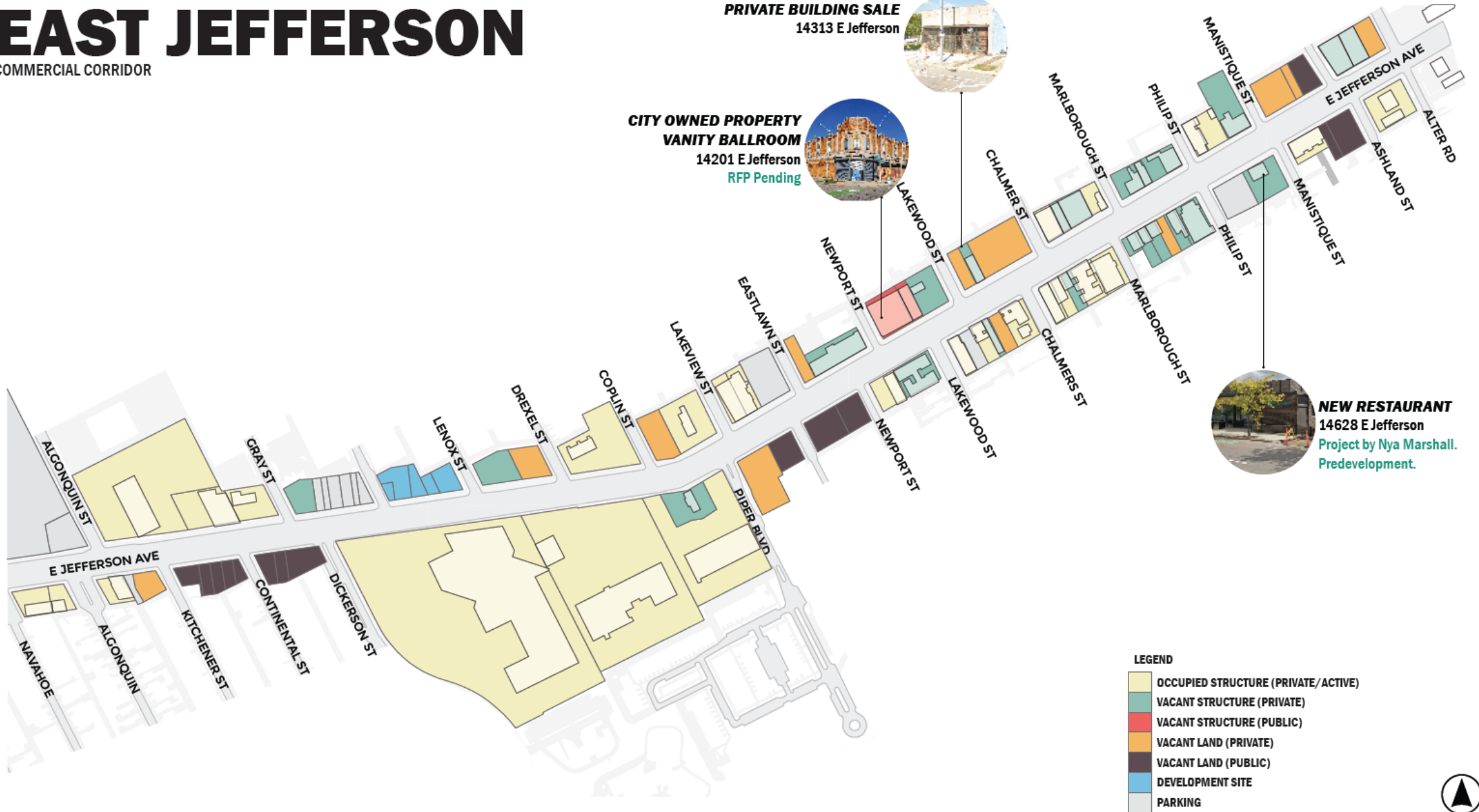
RFP Pending



NEW RESTAURANT

14628 E Jefferson

Project by Nya Marshall.
Predevelopment.



LEGEND

- OCCUPIED STRUCTURE (PRIVATE/ACTIVE)
- VACANT STRUCTURE (PRIVATE)
- VACANT STRUCTURE (PUBLIC)
- VACANT LAND (PRIVATE)
- VACANT LAND (PUBLIC)
- DEVELOPMENT SITE
- PARKING



FOR SALE
PRIVATELY-OWNED

14326 – 14332 E Jefferson Ave

\$300,000



KERCHEVAL

COMMERCIAL CORRIDOR

PAKRER DURAND
8047 Kercheval
Completed.



LEGEND

- OCCUPIED STRUCTURE (PRIVATE/ACTIVE)
- VACANT STRUCTURE (PRIVATE)
- VACANT STRUCTURE (PUBLIC)
- VACANT LAND (PRIVATE)
- VACANT LAND (PUBLIC)
- DEVELOPMENT SITE
- PARKING

MARROW
8044 Kercheval
Completed.



SISTER PIE
8058 Kercheval
Completed.



COMMERCIAL DEVELOPMENTS
8200 Kercheval
Completed.

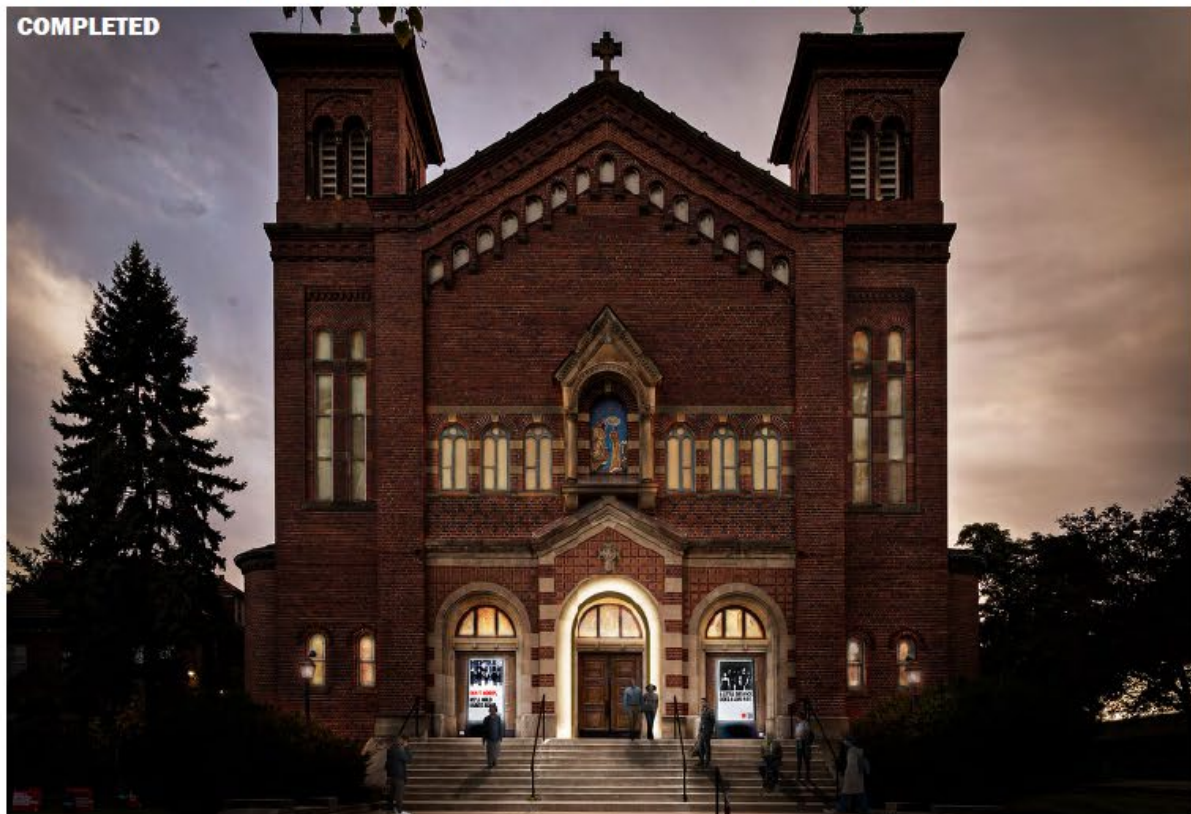


BARKSIDE DOG BAR
7960 Kercheval
Completed.



ISLANDVIEW GREATER VILLAGES

COMPLETED



THE SHEPHERD

1265 Parkview

Adaptive reuse of church into cultural arts center with multi-faceted programming focused on exhibitions, public projects, and performance. The grounds of the Shepherd will offer over 2.5 acres of new, publicly accessible park and green space to the local community. This project was recently featured in Architectural Digest.

Developer: Anthony & JJ Curis

PRE DEVELOPMENT



THE COE II

1500 - 1532 Van Dyke, & 8029 Coe Ave

54 unit infill development across street from Coe I. Looking at alternative funding sources - RAP ask was not received.

Developer: Cliff Brown

PROJECT UPDATES - NEIGHBORHOOD ECONOMIC DEVELOPMENT

ISLANDVIEW GREATER VILLAGES

COMPLETED



BARKSIDE DOG BAR

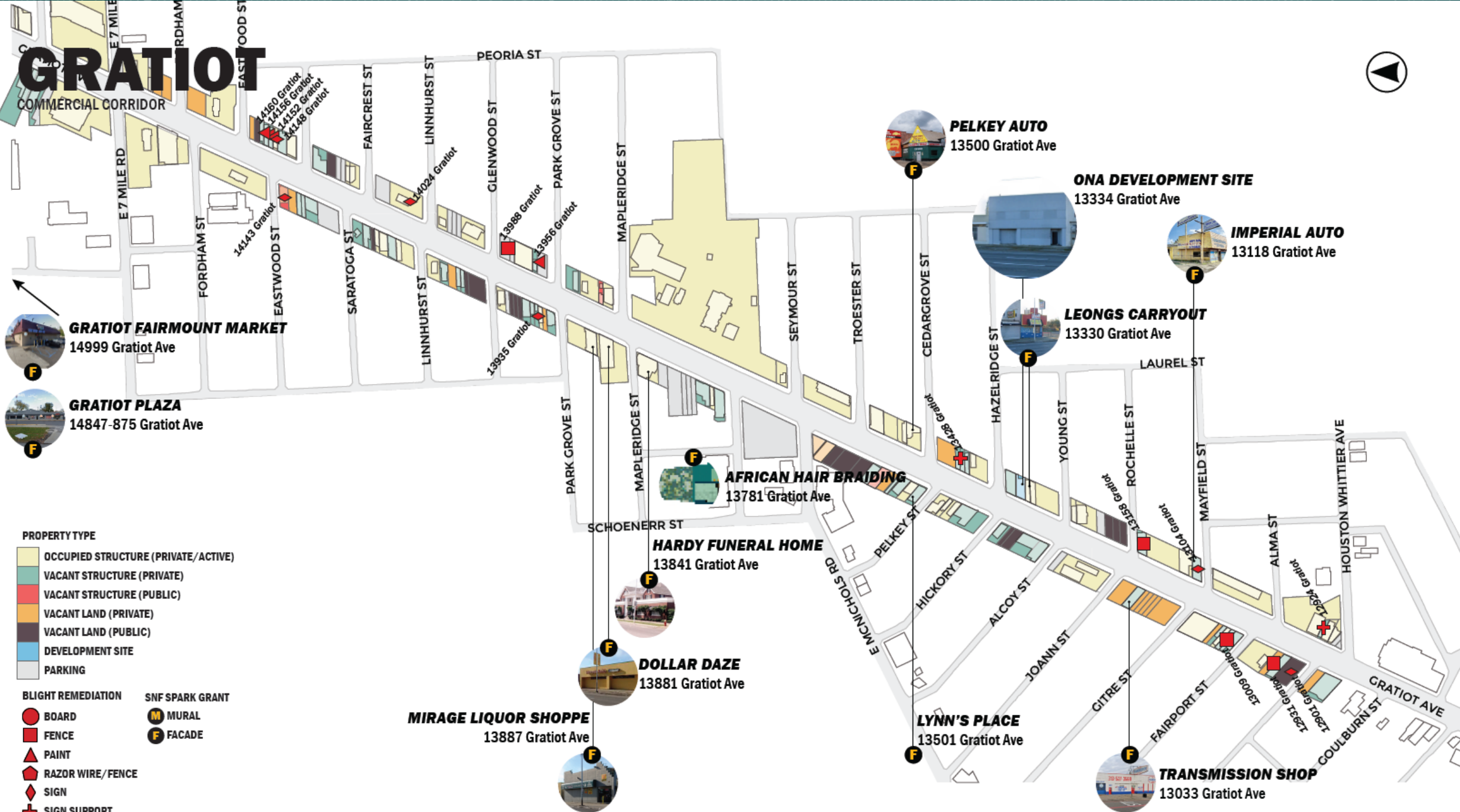
7960 Kercheval

COMPLETED



GRATIOT

COMMERCIAL CORRIDOR



- PROPERTY TYPE**
- OCCUPIED STRUCTURE (PRIVATE/ACTIVE)
 - VACANT STRUCTURE (PRIVATE)
 - VACANT STRUCTURE (PUBLIC)
 - VACANT LAND (PRIVATE)
 - VACANT LAND (PUBLIC)
 - DEVELOPMENT SITE
 - PARKING

- BLIGHT REMEDIATION**
- BOARD
 - FENCE
 - PAINT
 - RAZOR WIRE/FENCE
 - SIGN
 - SIGN SUPPORT
- SNF SPARK GRANT**
- MURAL
 - FACADE

MIRAGE LIQUOR SHOPPE
13887 Gratiot Ave

DOLLAR DAZE
13881 Gratiot Ave

HARDY FUNERAL HOME
13841 Gratiot Ave

AFRICAN HAIR BRAIDING
13781 Gratiot Ave

LYNN'S PLACE
13501 Gratiot Ave

PELKEY AUTO
13500 Gratiot Ave

ONA DEVELOPMENT SITE
13334 Gratiot Ave

LEONGS CARRYOUT
13330 Gratiot Ave

IMPERIAL AUTO
13118 Gratiot Ave

TRANSMISSION SHOP
13033 Gratiot Ave

GRATIOT FAIRMOUNT MARKET
14999 Gratiot Ave

GRATIOT PLAZA
14847-875 Gratiot Ave

FOR SALE
PRIVATELY-OWNED

12595 Gratiot

\$189,000



FOR SALE
PRIVATELY-OWNED

14550 Gratiot

\$489,000





[Detroitmi.gov/properties](https://detroitmi.gov/properties)